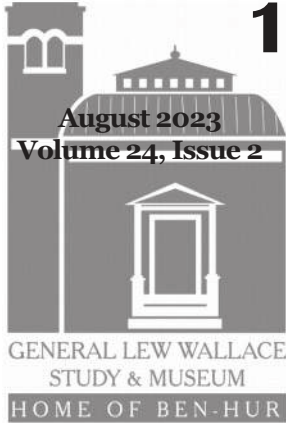




FROM THE STUDY



16th TASTE! of Montgomery County

Larry Paarlberg
Director

Museum staff, the TASTE Committee, and our dedicated volunteers are hard at work preparing for the 16th annual TASTE of Montgomery County. The event returns on Saturday, August 26 from noon - 10:00 p.m.

This year's TASTE will feature five live music acts! There will be three bands on the TASTE stage during the day and two additional performers on the lawn in front of the Study in between sets!

The **Elizabeth Lee Band** opens the day from 1 - 3 pm. Elizabeth Lee, together with Bobby Pugh, Jason McKay, and Jason Lineback, are singer-songwriters with an emphasis on clear vocals and harmonies. They perform chill covers from the 70s to today.

Elizabeth is also a fan of modern artists so her set promises something for everyone. Their performances will also include original songs from their album. You can check them out by visiting their social media pages or website. They are very excited to



Josh Kaufman

be playing in Crawfordsville, as it is Elizabeth's father Bobby Pugh's hometown!

Playing from 4:30 - 6:30 pm will be **The Midtown Madmen**.

This energetic four-piece band plays the hits of Elvis, Buddy Holly, Little Richard, Johnny Cash, and more. Their set list is a blend of classic rock and roll, swing, and blues mixed in to satisfy every crowd! With the Midtown Madmen on stage you are promised there will be a whole lot of shakin' goin' on!

Finishing up the evening will be **Josh Kaufman**, singing from 8 - 10 pm. Josh, the winner of season six of THE VOICE, has appeared on The Tonight Show starring Jimmy Fallon, made his Broadway debut as the lead in the Tony Award-winning revival of Stephen Schwartz's Pippin, and headlined the Indy Jazz Fest. His music has a powerful intimacy that reflects artists like Stevie Wonder, Marvin

Inside This Issue

16th TASTE!	1
Notes from the Director	2
Summer Intern	3
Poet of the South	4
2023 Fall Events	6
Taste Vendors/Volunteers	7
Sponsor Appreciation	8
Study Scrapbook	9
From the Arboretum	10
ArchiCamp 2023	11
Fall Events Calendar	12

*The General Lew Wallace
Study & Museum*

*is deeply committed
to the protection
and preservation
of Lew Wallace's
legacy now and for
generations to come.*

Mission

Board of Trustees

President
John Culley

Vice President
S. Chandler Lighty

Treasurer
Byron Thada

Secretary
Erin Gobel

Ex Officio
Fawn Johnson

Joey Gerold

J. Lamont Harris

Nicole Hazlett

Judith Kleine

Susan Rosen

Cindy Smith

Gerry Turner

Bronwen Wickkiser

Notes From The Director



“History is written by victors.” This quote is often attributed to Winston Churchill, but its origins are actually unknown. Another quote by philosopher George Santayana reads, “Those who cannot remember the past are condemned to repeat it.” That has proven true time and again! Even in our orientation video at the General Lew Wallace Study & Museum, former director Joann Spragg notes, that when people say our children need heroes to look up to, she reminds us that we have plenty of heroes in our history but we’ve forgotten them.

At the Lew Wallace Museum we work diligently to remember, reflect, interpret, and present the history of Lew Wallace so that he and his contributions are not forgotten. We endeavor to do so in ways that are meaningful, timely, and accessible. The days of placing men like General Wallace on a pedestal are over. For him to remain relevant, his life must be studied and presented in all its nuances and in context. In doing so, I like to think we are embracing James Baldwin’s comment that “History makes the present complete.”

Lonnie Bunch, the current head of the Smithsonian Institution, commented on the origins of

the Statue of Liberty. It was conceived in France during the 1860s as a tribute to the end of slavery. The statue took decades to design, to develop, and to fund. The design and meaning attributed to the Statue changed from one celebrating the end of slavery to one of welcoming immigrants to America. As Mr. Bunch noted: “You can tell a great deal about a country by what it remembers. Monuments are a concrete way of remembering history. You can also tell a great deal about a country by what it forgets.”

Our effort to remember Lew Wallace is guided by research spanning decades. Years ago we created an advisory group called the Wallace Scholars Advisory Board. These people, who live all across the county, are scholars in studies related to Lew Wallace or Ben-Hur. Along with members of the Wallace family, the Board has provided us with insightful and intriguing information that we are able to pass on to visitors leading to engaging tours that give a well-balanced interpretation of Lew Wallace.

I am happy to say this research and interpretation of Lew Wallace is not done! Many people continue to study the man and his life. Currently, the museum is in contact with a history professor at Lone Star College-Kingwood (Texas) who is considering an interesting

Museum Staff

Director
Larry Paarlberg
lpaarlberg@ben-hur.com

Associate Director
Thomas Meeks
tmeeks@ben-hur.com

Grounds Manager
Deb King
dking@ben-hur.com

765-362-5769
study@ben-hur.com



@WallaceStudy

Notes From The Director Continued

analysis of Lew's masterwork, Ben-Hur. We are also working with another history professor at Brown University in Rhode Island working on matters related to Lew Wallace's post-Civil War career as a member of U.S. military commissions (the trial of the Lincoln assassins; the trial of Henry

Wirz) and also as an author and artist. Wallace plays an important role in his book soon to be published by Alfred A. Knopf about the ending of the American Civil War.

The museum is so grateful to the Wallace Scholars Advisory Board, the Wallace family, and

the numerous researchers who help us not only remember General Lew Wallace, but also help us learn from the man and his life so that we can provide the best presentation of his history to museum visitors.

Summer Intern

For many years, the General Lew Wallace Study & Museum has been fortunate to have a number of talented summer interns. This year is no different. Haley Burke, a Crawfordsville native and 2020 graduate from Crawfordsville High School, has been working with us over her summer break. Haley, beginning her senior year this fall, attends Indiana State University in Terre Haute. An Honors College student who is majoring in History with minors in Museum Studies and Dance, Haley is very active with a number of extracurriculars on campus. At ISU, she is involved with the Honors Council, Honors Peer Mentors, is the President of the History Club, and she works at the Cunningham Memorial Library on campus in the Cataloging department. After graduating from Indiana State University, Haley plans to attend graduate school to pursue a master's degree in Library and Information Science. With her background and interest

in research we asked Haley to look into some topics that have frustrated previous researchers! A couple of these topics continued to frustrate, but she had great success with one significant mystery.

Lew Wallace had a half-brother, David Wallace Jr. who has been difficult to find in the records. In an unusual twist, David's wife Zelda Seguin-Wallace was much better documented and easier to research because she was a famous Opera performer. In July, Haley found a detailed obituary for David that answered so many questions. For icing on the cake, it also included a photograph of David! David had a full and varied life and participated in many of the leading businesses of Indianapolis for over 50 years and was very close to his half-brothers Lew and William. Thanks to Haley, we now know so much more about this important member of the Wallace family.



David Wallace Jr.



Zelda Seguin Wallace

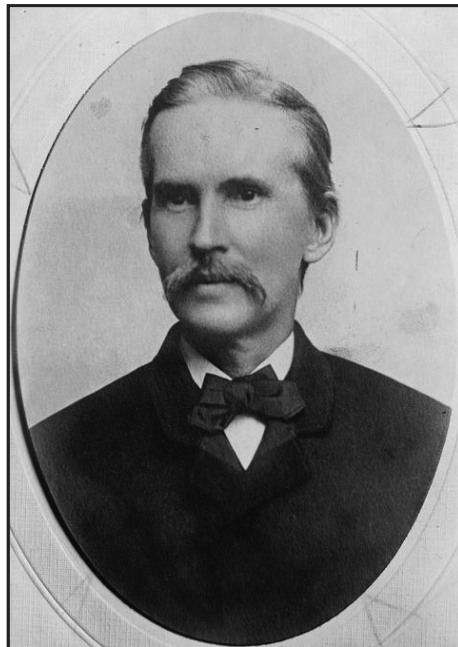
Poet of the South

Larry Paarlberg
Museum Director

Ben-Hur: A Tale of the Christ was published on November 12, 1880. Over time, Lew Wallace received thousands of letters and notes congratulating him on the masterwork. People from all walks of life wrote testimonials about the book and its stage play adaptation. Notable Americans like James Garfield, Ulysses S. Grant, and William Jennings Bryant wrote. King Edward VII and Queen Alexandra of England commented as well. Jefferson Davis, the defeated president of the Confederacy praised the book as a tale of redemption and reconciliation. Jefferson Davis was not the lone southern icon of the 19th century to write. Famed southern poet Paul Hamilton Hayne wrote a glowing letter to Lew within a couple of weeks of the book's publication. How Hayne acquired the book so quickly given his residence in rural Georgia is unknown, but his letter to Lew makes it clear the book moved him.

Born in Charleston, South Carolina on January 1, 1830, Hayne was raised in the affluence of the Antebellum south. Although his father died when Paul was young, he managed to graduate from the College of Charleston in 1852 and began the practice of law. Like Lew Wallace, Hayne was not overly excited about being an attorney, and he abandoned his law career to pursue literary

interests. Hayne entered the Confederate army in 1861 and served as an aide-de-camp to Governor Francis Pickens, but Hayne's health failed and his military career was cut short. His family home and all possessions were lost during the bombardment of Charleston in 1862, prompting a move to a rural location he called Copse Hill, outside of Augusta, Georgia. He lived there until his death in 1886.



Paul Hamilton Hayne

During his lifetime Hayne was known as a great Southern poet, literary critic, and editor. He enjoyed great fame and, like Lew, is credited with helping up and coming authors find their way to publication and acclaim. In his day, Hayne was appreciated throughout the country becoming the unofficial

poet laureate of the South. Today, some of the authors he encouraged are better remembered than Hayne.

Hayne's letters about *Ben-Hur* were among the first Wallace received and were written prior to the public acclaim that would follow in the mid and late-1880s. His glowing letters to Lew beginning on December 2, 1880 meant a great deal to Lew, leading to a blossoming correspondence of mutual respect over several letters.

Hayne's letter of December 2 with additions on December 4 is too long to reproduce here (although Susan Wallace and Mary Hannah Krout thought it such a great testimonial that they included it in Lew's *Autobiography*). Hayne wrote, in part from Copse Hill: "I did not think that the man lived in America who could have written such a book as *Ben-Hur*. It is, 'me judice', a noble and very powerful prose poem. A work which must be placed on the same shelf with Kingsley's *Hypatia*. What can I say more in its commendation? Pages in it have thrilled me through and through, while I remark that never on any occasion have you sunk below the dignity of your majestic theme. . . ."

Hayne detailed parts of the story that moved him, expressing great enthusiasm for each detail brought to life by Lew. Although time would prove him wrong, in 1880 Hayne noted: "Of course, in the ordinary sense of the term, *Ben-Hur* is not likely to

become ‘popular,’ but by scholars and thinkers of every conceivable grade this singularly graphic performance must be cherished. . . ”

In January of 1881, Lew responded to Hayne from Crawfordsville: “Dear Sir—Your letter, with its good things so pleasantly said chased me from Santa Fe to Washington, and from Washington to this place; and I avail myself of the first leisure moment to acknowledge it. I hope you will allow me to be candid. Many flattering

letters have reached me, Ben-Hur the subject; somehow, though the reason for it is a trifle obscure, the one bearing your signature has given me as much pleasure as any of the others. . . it never occurred to me that it would find favor in the South; much more that you, admittedly the singer of the South, personally a stranger to me, would put yourself to such trouble, and write me a paper so long, so plainly spontaneous, so enthusiastic. Not merely a surprise, it is a most agreeable surprise. . . ”

Hayne responded to Lew’s January 1881 letter with a reply written in early February. In the short correspondence of these 19th century literary lions—one from the North and one from the South demonstrated that within 15 years of the Civil War, creative men like Wallace and Hayne could reach across tremendous political divides and build new relationships.

General Lew Wallace deserves his place in history. Help us preserve that place.

Membership to the **Lew Wallace Study Preservation Society** begins with your annual contribution of \$25 or more. Membership offers discounts and complimentary admission and event tickets.

Lieutenant Level—\$25 (Individual)

- Complimentary admission for 1
- Subscription to newsletter

Major General Level—\$50 (Family)

- Complimentary admission for family
- Subscription to newsletter

Governor Level—\$100 (Sustainer)

- Major General-level benefits, plus
- 10% discount in museum shop



Ambassador Level—\$250 (Benefactor)

- Governor-level benefits, plus
- 2 tickets to the annual Taste of Montgomery County

Ben-Hur Level—\$500+ (Patron)

- Ambassador Level benefits, plus
- 1 ticket to the annual Holiday Tea

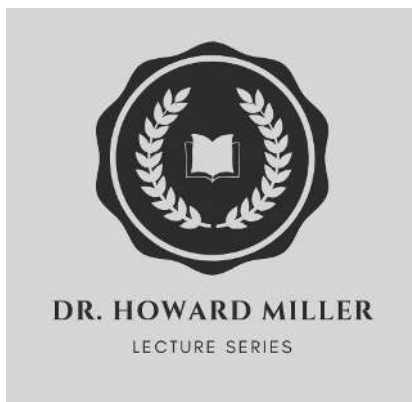
Name _____
 Address _____
 City _____ State _____ Zip _____
 Phone number _____ e-mail _____

Please clip & mail your membership information to LWSPS, PO Box 662, Crawfordsville, IN 47933

- Enclosed is my check payable to the Lew Wallace Study Preservation Society
- I will pay with credit card online
 Please visit www.ben-hur.com/join-support to pay for your membership with a credit card via Paypal
- I wish to remain anonymous
- I’m declining benefits, making my contribution deductible to the full extent of IRS regulations.

2023 Fall Events & Programming

Lew Wallace was a Renaissance man with many talents and varied interests! Each year we strive to provide programs that speak to the talents of General Wallace. After the TASTE on August 26, we roll right into a great series of educational (and fun) programs.



Thursday, September 14, 7:00 pm – Dr. Howard Miller Lecture Series:

Dan O'Brien will present an engaging talk on another of Crawfordsville's celebrated authors and close personal friend of Lew Wallace—Maurice (pronounced "Morris") Thompson. Like Lew Wallace, Thompson had a profound influence on many of the authors during the Golden Age of Hoosier Authors. He also placed Crawfordsville on the map as the center of international archery!

Thursday, September 21, 7:00 pm –Hoosier Authors Book Club: *A Place Called Hope* by Phillip Gulley.

When Quaker Pastor Sam Gardner is asked by the ill Unitarian minister to oversee a wedding in his place, Sam naturally agrees. It's not until the couple stands before him that he realizes they're two women. In the tempest of strong opinions and misunderstandings that follows the incident, Sam faces potential unemployment and some life-changing decisions. This book continues the theme of this year looking at cultural diversity in Hoosier authorship.

Thursday, September 28, 7:00 pm: In concert with the Classics Department of Wabash College, we will be showing the epic 1925 silent film version of *Ben-Hur*. While many of us remember the 1959 film version of *Ben-Hur* starring Charlton Heston, the 1925 movie with Ramon Navarro is a classic in its own right. In many ways, Navarro's version revolutionized the movie industry in Southern California. Come see just what an epic film looks like! This event will be at Wabash College and is free of charge.

Thursday, October 12, 7:00 pm--Dr. Howard Miller Lecture Series:

What does General Lew Wallace have in common with the authors of *Dracula*, *The Hunchback of Notre Dame*, *Frankenstein*, *The Phantom of the Opera*, and *The Portrait of*

Dorian Gray? Give up? Lew too wrote a Gothic Horror Tale! Halloween comes early to the Study as Howard Miller returns to Ben-Hur Country. He will try to convince you that Wallace's third and last novel, *The Prince of India*, is not only the General's "take" on The Legend of the Wandering Jew, but is also a late Victorian Gothic Tale of Terror.

Thursday, October 26, 7:00 pm--Dr. Howard Miller Lecture Series:

Known as Dr. Film, Eric Grayson is a nationally renowned film preservation expert, specializing in silent movies. Eric will be presenting the 1918 original film of *Little Orphant Annie*. This unusual surviving film from the early 20th century also features a rare film appearance by James Whitcomb Riley—the Hoosier poet and close friend of Lew Wallace. Before his death, in 1916, Riley was filmed for the Indiana Centennial, but that film has been lost. In 1918, a portion of that film was incorporated into *Little Orphant Annie*. After showing the film, Eric will talk about how this film was discovered, preserved, and restored.

Saturday, November 25 – Lew Wallace Hoosier

Author Fair: Our annual author fair is held at Fusion 54 on Small Business Saturday, in conjunction with Crawfordsville

TASTE, Continued.

Gaye, Paul Simon, and Jimmy Buckley. When you hear him sing, it's clear why he won season six of THE VOICE!

Between the headliners sets, we will have Emery Allen performing on the front lawn from 3:15 to 4:15. A Crawfordsville native, Emery

has been singing and performing her whole life. She has also appeared in theatre productions, on television, and does voice-over work. Her comfort lies in singing great show tunes of the theater, but she is also developing originals that reflect her personal style. From 6:45 to 7:45 The Bumps

will enliven the Study grounds. This Central Indiana Alternative Band is comprised of three brothers; Nate, Gabe and Sam Mayberry and Lead Vocalist/Guitarist Peter Halupka. They draw their inspiration from various genres: blues, rock, heavy metal, and alternative.

2023 TASTE! Vendors, Volunteers, and Sponsors

Food and Drink:

Local restaurants, caterers, and food vendors will serve their delicious delicacies on Museum grounds. Returning favorites include **Aki Les Voy Takeria**, **China Inn**, **Warehouse Bakery**, and **The Juniper Spoon**. Alcohol vendors will be **Coal Creek Winery** and **Klooz Brews**. A menu will be available for download from the TASTE website.

Tickets:

Advance tickets go on sale August 1 and can be purchased at the Carriage House of the General Lew Wallace Study & Museum; the Montgomery County Visitors and Convention Bureau at 101 W. Main; Milligan's Flowers & Gifts at 115 E. Main Street; and Crawfordsville Parks & Recreation at 922 E. South Blvd. Advance tickets are \$5 for adults and \$2 for students. Tickets at the gate will be \$7 for adults and \$3 for students.

Volunteers:

Are you interested in attending the TASTE for free? The museum is recruiting volunteers to assist before, during, and after the event. Volunteers get a TASTE t-shirt and free admission to the event. To volunteer, please visit <http://www.tasteofmontgomerycounty.com/volunteers/> and click the "Sign Up Genius" button.

Sponsors:

Special thanks to our Title Sponsors for the 2023 TASTE, who donated \$1000+: Acuity Brands; Everwise Credit Union; Henthorn, Harris & Weliever; Hoosier Heartland State Bank; Dr. Howard Miller; Market Street Wealth Management – Jessica Bokhart; Montgomery County Tourism Commission; Nucor Steel Indiana; The Paper of Montgomery County; and Tri-County Bank and Trust. For a full list of our amazing sponsors, please check our Thank You list!

The staff and board thanks the TASTE Committee in advance for their hard work and dedication to this event: Stephanie Cain, Rusty Carter, Elaine & Rick Chase, Erin Gobel, Joey Gerold, Deb King, Larry Paarlberg, Tom Meeks, and Dale Petrie. A special thanks to this year's committee chair Jessica Bokhart. We would also like to thank the men of Wabash College for all of their help with TASTE preparations!

The TASTE is the biggest annual fundraiser for the General Lew Wallace Study & Museum. All proceeds directly benefit the Museum. Bring your friends and family to help support the organization that keeps General Lew Wallace's legacy alive for future generations. Visit tasteofmontgomerycounty.com or follow on us on Facebook for more information!

General Lew Wallace Study & Museum Contributions

Received April 1, 2023 through June 30, 2023

Every member and donor matters a great deal to us and we appreciate your support. We have made every attempt to ensure the accuracy of this list. If we have made an error in your listing, please contact us immediately.

Memberships

Ben-Hur:

Chuck Beemer
Debra & James Rodebaugh
Gail Stephens

Ambassador:

Jill & John Capper
Barb & Steve Carver
Sue & Jess Lucas

Governor:

Lucy & Aus Brooks
Patience & Jim Barnes
Caroline Claiborne
James Collier
Trudy & Ron Dickerson
Ruby Elliot
Kathleen Ellison-Nixon
Paula & Darin Hutson
Eatha & Chuck Sommer
Nancy & Richard Williams

Major General:

Kathy & Rusty Carter
Dale Milligan
Rhonda & Mike Mitchell
Missy & Greg Redding
Nancy Rogers
Karen & Byron Thada

Lieutenant:

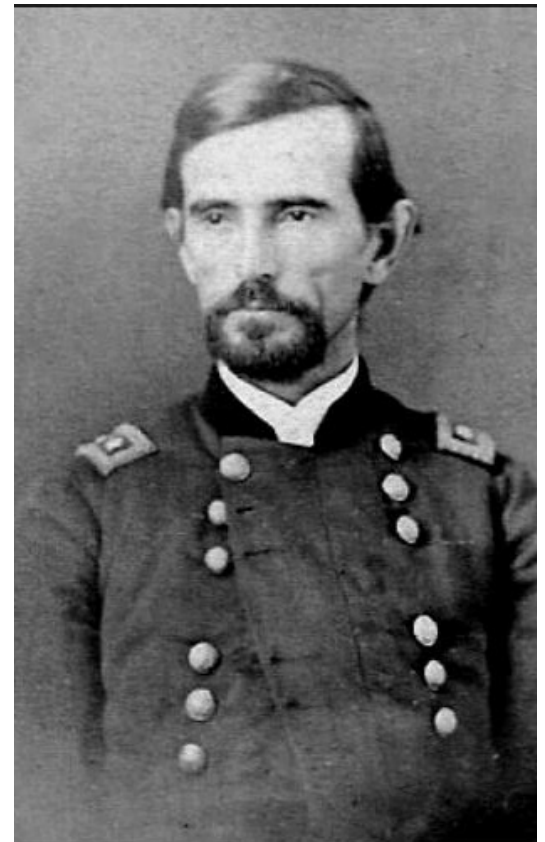
Louisa & Charles Blaich
Linda Brady
David Chidester
Anthony Chidester
Glenda & Steve Frees
Richard Frank
Judy & Conrad Harvey
Kita Kirkpatrick
Judith & Tom Leuck
Ruth Ann & Kenneth Newnum
Sam Smith

Annual Fund:

Ellen Ball & Tom Twarek
Charles G. Beemer
Diane & Mike Beemer
Rachel Brown
Richard T. Buck
Jan & Roger Cain
Jill & John Capper
Kathy & Rusty Carter
Barb & Steve Carver
Elaine & Rick Chase
Kenn Clark
Betty & John Culley
Diane Green
William Hale
Dee & Dennis J. Hohlbein
Helen & Marc Hudson
Diane Kreisher
Ivan D. Lancaster
Judy Michal
Blair Miller & Gregory Leddy
Howard Miller
Dale Milligan
Suanne & Tom Milligan
Nancy & Doug Mills
Nancy & Greg Morrison
Jon Pactor
Ruth Ann & Edward Quick
Nancy Rater
Debra & Mike Rodebaugh
Susan Rosen
Jane Schultz
Cindy & Jerry Smith
Joann & Michael Spragg
Marie & Tom Stocks
Kelly & Dan Taylor
Robyn & Bernie Thompson
Sandy & John Tidd
Brian Trumbore
Chris & Pat White
Nancy & Richard Williams
Beverly & Jack Wyatt
Patricia Zorger

Adopt-A-Spot:

Ellen Ball/Tom Twarek
Barb & Steve Carver
John & Betty Culley
Rick & Elaine Chase
Suanne & Tom Milligan
Helen & Marc Hudson
Roger & Jan Cain
Rusty & Kathy Carter
Blair Miller
Jerry & Cindy Smith
Mike & Diane Beemer
Chuck Beemer
Edward & Ruth Quick



Rarely Seen Lew Wallace Civil War Photo

Contributions, continued

The TASTE!

Title:

Acuity Brands
 Everwise Credit Union
 Henthorn, Harris, & Weliever
 Hoosier Heartland State Bank
 Dr. Howard Miller
 Market Street Wealth
 Montgomery County
 Tourism Commission
 Nucor Steel Indiana
 Tri-County Bank & Trust

Contributor:

Allen Monument
 Anonymous
 Cook Home Services
 Sanders Funeral Care
 The Paper of
 Montgomery County

Valero Renewables Linden
 Wabash College
 Walden Transport
 & Recycle
 WCDQ-WIMC-WCVL

Supporter:

Arni's of Crawfordsville
 Arthur's Excavation
 & Farm Drainage
 Burkhardt Funeral Home
 Crawfordsville Oral Surgery
 Gobel, Justice & Pyle
 Gould Body & Paint
 Industrial Federal
 Credit Union
 Indiana American
 Water Co.
 The Juniper Spoon
 Lakeside Book Company

Morrison Realty
 Northridge Chiropractic
 nPrint
 Pace Dairy Foods
 Sugar Creek Eyecare
 Swift Land Consulting
 Taylor, Minnette,
 Schneider & Clutter, P.C.



Study Scrapbook



ArchiCamp Bridge Competition



Hawk surveying the grounds

Burma-Shave Sign



Assoc. Director Tom and son Henry

Programming, continued

Main Street's Downtown Party Night. Authors from Crawfordsville and around the state will have books and related merchandise for sale. They are happy to sign books and discuss writing with attendees. Times to be determined. Learn more in our fall issue.

Friday, December 1, 3 – 6 pm – Holiday Tea & Fashion Show: This fundraiser, held at the Elston Homestead, will showcase a selection of sweet and savory treats, holiday music, and an interactive fashion show presented by heathcliff.



2022 Holiday Tea Fashion Model Kathy Brown

From the Arboretum

Deb King
Grounds Manager

The gardens at the General's Study have withstood a March heat wave, a cool April, and a ferocious wind storm that brought down numerous trees throughout Crawfordsville. The fallen limbs are being cut up and gathered for disposal at the city yard waste site. The weeds that have sprouted are being pulled from the various gardens throughout the property.

Yellow, gold, orange, white and blue are appearing all over the Museum grounds. The seeds gathered in the fall have been sown into the gardens. Zinnias provide an artists palette of color in Susan's garden. Shades of hot pink, light pink, yellow, orange, and white zinnias complement the yellow black-eyed Susan and daisies. Celosia, plume-type cockscomb, have germinated and will soon burst

into bloom. Pink and white bicolor feathers appear on three foot plants.

The plethora of blooming bushes and flowers have attracted numerous winged creatures, including hummingbirds, goldfinches, butterfly moths, bees, and other insects to feast on sweet nectar and gather strength for the journey to their winter habitats.

The grounds of the Museum are a study in the senses. The bright colors of the flowers fill the eyes. Lew Wallace Jr.'s garden is filled with herbs, fragrant to the touch, providing a variety of aromas. The raucous squawks of the crows occasionally drown out the fluttering hum of the hummingbirds and the beautiful trill of house wrens.



Zinnias



Swallowtail on a butterfly bush

ArchiCamp 2023

Thomas Meeks

Associate Director

Amid the Canadian wildfires that veiled the country in smoke, Archicamp 2023 was a resounding success. The smog forced minor adjustments, pushing some activities indoors for camper safety. Undeterred by the changes, the campers demonstrated resilience akin to the historic buildings they explored over the two-day camp.

The first day, unaffected by the smog, focused on blueprint design. Campers broke the ice with a game of jumbo Jenga before embarking on a walking tour of Elston Grove. The tour made a stop at the Carnegie Museum to view the magnificent mural in their lobby. Across the street at the Masonic Cornerstone, campers received a tour of the historic building by architect Judith Kleine, and viewed

its blueprints. Architectural aspects were pointed out and discussed along the route, enriched by informative presentations at each of our stops. Back at camp, the young architects toured the Study, examining its blueprints as well. Finally, campers designed their dream homes, capturing their creativity on the page.

Day two presented challenges of worsening air quality, prompting us to shift activities indoors. The planned walking tour of Historic Downtown Crawfordsville was condensed, wearing masks throughout. This preceded an exciting popsicle stick bridge building competition. After establishing a basic understanding of bridge physics and discussing examples of local bridges, campers divided into teams to design their popsicle stick

bridge. The campers showcased their engineering prowess, constructing arch and truss bridges capable of withstanding an impressive amount of weight. The strongest held over 20 pounds!

As the weight competition began, parents and guardians arrived to watch. Their enthusiasm and laughter, along with their excited campers' investment in the crumbling bridges made all the effort and preparation worthwhile. As the 2023 ArchiCamp year concludes, our anticipation is building for the awaiting adventures of future years.

A special thank you to Kathy Brown, Judith Kleine, Deb King, Jan Cain, Haley Burke, and Nicole Hazlett for helping ensure ArchiCamp 2023 ran smoothly!



ArchiCamp Jumbo Jenga



ArchiCamp Walking Tour



GENERAL LEW WALLACE STUDY & MUSEUM

200 Wallace Avenue / PO Box 662
Crawfordsville, Indiana 47933
Phone: 765-362-5769
Email: study@ben-hur.com
www.ben-hur.com

PRSR STD
Nonprofit
US Postage Paid
Crawfordsville IN
Permit No. 8

RETURN SERVICE REQUESTED

2023 Fall Events & Programming Calendar

Saturday, August 26, Noon to 10:00 pm—TASTE of Montgomery County The 16th annual TASTE of Montgomery County will take place on museum grounds featuring live music and scrumptious food from local restaurants. Mark your calendars now to join us!

Thursday, September 14, 7:00 pm - Dr. Howard Miller Lecture Series—Dan O’Brien, speaking on Maurice Thompson.

Thursday, September 21, 7:00 pm - Hoosier Authors Book Club—*A Place Called Hope* by Phillip Gulley.

Thursday, September 28, 7:00 pm—1925 Ben-Hur Film.

Thursday, October 12, 7:00 pm - Dr. Howard Miller Lecture Series—Dr. Howard Miller, speaking on *The Prince of India*.

Thursday, October 26, 7:00 pm - Dr. Howard Miller Lecture Series—*Little Orphant Annie* Film presentation by Eric Grayson.

Saturday, November 25—Lew Wallace Hoosier Author Fair & Downtown Party Night.

Friday, December 1, 3 - 6 pm—Holiday Tea & Fashion Show.

Find all of our events and programming on the community calendar with Yodel!

