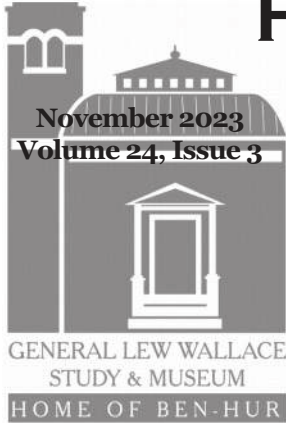




# FROM THE STUDY

## HOLIDAY TEA & FASHION SHOW



**Larry Paarlberg**  
*Director*

Friday, December 1, we invite you to ring in the holidays with the 17th annual Holiday Tea & Fashion Show graciously hosted at the Elston Homestead on Pike Street, one of Crawfordsville's prestigious historic homes. Holiday merriment will abound as guests support both the General Lew Wallace Study & Museum and Lane Place. The Elston Homestead was the childhood home of sisters Susan Elston Wallace and Joanna Elston Lane.

Tea, coffee, sweets, and savory snacks will be served on the historic Elston family silver. Door prizes will be awarded throughout the Tea and live holiday music will again be provided by the Wabash College Glee Club.

"The museum is fortunate to have such willing and generous organizations, including the Montgomery County Historical Society, Wabash College, Tea sponsors, and other local businesses, support our event," said Larry Paarlberg, Director

of the General Lew Wallace Study & Museum. "For so many, our Holiday Tea has become a popular way to gently welcome the holiday season."

Reservations for the Holiday Tea & Fashion Show are \$25 per person and due November 30. To reserve places for yourself or guests, call the Lew Wallace Study & Museum at (765) 362-5769 or visit [www.ben-hur.com/programs/holiday-tea](http://www.ben-hur.com/programs/holiday-tea) to purchase tickets.

### Inside This Issue

Holiday Tea & Fashion Show	1
Notes from the Director	2
Support the Museum	3
The Storied Sea... Sickness	4
Taste! 2023 A Success	6
Lew Wallace Author Fair	7
Sponsor Appreciation	8
Study Scrapbook	9
Vote For New Board Members	10
From The Arboretum	11
Holiday Tea Sponsors	12

*The General Lew Wallace  
Study & Museum*

**Mission**  
*is deeply committed  
to the protection  
and preservation  
of Lew Wallace's  
legacy now and for  
generations to come.*

The homestead will be decorated for the holiday season by Milligan's Flowers & Gifts highlighting this year's theme, A Wintery Floral Fantasy. The annual fashion show will feature styles from local shop *heathcliff* with models showcasing a variety of winter fashions.



*Holiday Tea 2022 Smorgasbord*

## Board of Trustees

*President*  
**John Culley**

*Vice President*  
**S. Chandler Lighty**

*Treasurer*  
**Byron Thada**

*Secretary*  
**Erin Gobel**

*Ex Officio*  
**Fawn Johnson**

**Joey Gerold**

**J. Lamont Harris**

**Nicole Hazlett**

**Judith Kleine**

**Susan Rosen**

**Cindy Smith**

**Gerry Turner**

**Bronwen Wickkiser**

## Museum Staff

*Director*  
**Larry Paarlberg**  
[lpaarlberg@ben-hur.com](mailto:lpaarlberg@ben-hur.com)

*Associate Director*  
**Thomas Meeks**  
[tmeeks@ben-hur.com](mailto:tmeeks@ben-hur.com)

*Grounds Manager*  
**Deb King**  
[dking@ben-hur.com](mailto:dking@ben-hur.com)

**765-362-5769**  
[study@ben-hur.com](mailto:study@ben-hur.com)

## NOTES FROM THE DIRECTOR



General Lew Wallace's Study has been a touchstone of Indiana history for over 120 years. The Study embodies the

creative energies of General Wallace and his masterwork, *Ben-Hur*. Here at the museum, we work diligently to assure that the buildings and grounds continue to serve as a historic touchstone, reflecting the heritage of Crawfordsville, Montgomery County, and Indiana. Through programming and community engagement, we also endeavor to make the museum a meaningful place in the life of our citizens. Each year we seek to improve our programming and maintenance of the historic features.

As 2023 comes to an end, we can look back on a year of accomplishment and activity. This year we've hosted several public educational programs as part of our Howard Miller Lecture series. Our exhibit in the Lynne D. Hohlbein Gallery in the Carriage House showcased the creative marketing and merchandising that spread the name of *Ben-Hur* worldwide for over 100 years. Our Hoosier Authors Book Club began in the fall of 2015 with Booth Tarkington's *Magnificent Ambersons* and it is still going strong. In the years that have followed,

club members have read over 40 books by Hoosier authors past and present. Authors Ray Boomhower, Susan Crandall and Kelsey Timmerman even joined in the discussion of their books providing significant insights for club members. With Lew Wallace's literary significance, our museum also hosts an Author Fair each November bringing approximately 20 current Indiana authors to our community to share their works and visit with guests. The in-person component of this event makes it a truly valuable addition to the cultural life here in Crawfordsville.

This year we hosted a capacity crowd of students in our summer camp, ArchiCamp. Students learned about the historic architecture of Crawfordsville, structural design, and historic preservation. While many memories were made, perhaps the most indelible memory for the students and their families was the bridge competition. The campers made bridges out of popsicle sticks. As their last activity, the bridges were tested to see how much weight they could carry before collapsing—the tension was palpable as loads were incrementally increased until dramatic failure! One bridge carried in excess of 20 pounds!

As we seek to promote Lew Wallace and Crawfordsville,

*cont. on page 3*



**@WallaceStudy**

## NOTES FROM THE DIRECTOR CONTINUED

it is encouraging to see that we've hosted several thousand guests from at least 48 states, the District of Columbia and seven countries this year on tours of the property. Whether people come because of *Ben-Hur*, because of an interest in the Civil War, or because of an interest in Lew Wallace himself, they leave with an increased awareness of his history and times, and of Crawfordsville and

Montgomery County! We work to be educational ambassadors for our community.

Even as we look to next year we still have important and enjoyable events on our 2023 calendar—so check our website or give us a call. That being said, it is hard to believe that 2024 will soon be here, with a new exhibit and new programming. Next year we will be looking at Montgomery

County's engagement in and contribution to the Civil War. We are look forward to the coming year with anticipation—and with sincere appreciation. We could not begin to do what we do at the museum and for our community without the tremendous support of our members, donors, event sponsors, volunteers, City staff and others. Thank you for making 2023 one for the record books and see you in 2024.

## SUPPORT THE MUSEUM

Endowed funds help nonprofits, like the General Lew Wallace Study & Museum, secure long-term survival, build flexibility, and assure greater capacity as financial stability increases. The funds are permanent and forever. They are invested to grow over time, providing a stable source of annual revenue. The Lew Wallace Museum created an endowment at the Montgomery County Community Foundation in 2014. Since then, the interest has helped us complete several preservation projects.

A great way to send a gift to the endowment is through your required minimum distribution (RMD), the minimum amount you must withdraw from a retirement account each year. These withdrawals must be taken when you reach age 72 (for those who reached the age of 70 ½ before January 1, 2020, the RMD began at age 70 ½). If

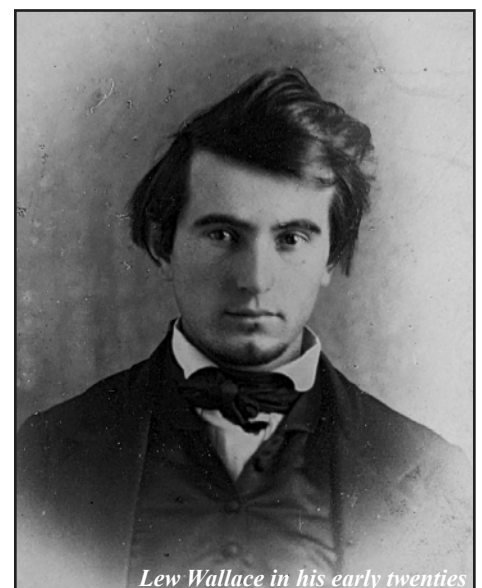
you do not need this additional taxable income this year from your traditional IRA account, consider taking a qualified charitable distribution (QCD) by transferring up to \$100,000 to charity each year. This would allow you to fulfill your charitable goals while avoiding the income tax on your distribution.

If you ever wanted to help support the General Lew Wallace Study & Museum this is the time! If you would like more information about giving, please contact Kelly Taylor, Executive Director of the Montgomery County Community Foundation at (765) 362-1267 or via email at [kelly@mccf-in.org](mailto:kelly@mccf-in.org). If you would like to mail a contribution, it can be sent to: Ms. Kelly Taylor, Executive Director, Montgomery County Community Foundation, 119 East Main Street, Crawfordsville, 47933 with "Lew

Wallace Museum fund" on the memo line. Through your gift to the Wallace fund, you will help the museum continue to set the "machinery of the wonder-box" in motion.

***"To catch a boy and hold him fast one has only to set the delicate machinery of the wonder-box in him at work."***

**- Lew Wallace**



*Lew Wallace in his early twenties*

## THE STORIED SEA...SICKNESS

*Thomas R. Meeks Jr.*

*Associate Director*

Susan Wallace penned a piteous letter to her sister Joanna on July 3, 1881, following a grueling trip across the Atlantic: “What misery they escape who never go to sea.” Susan’s journey was the result of her husband’s recent appointment as Minister to the Ottoman Empire, affording her a once-in-a-lifetime opportunity to accompany him to the old world. Their transatlantic odyssey was a rollercoaster of emotions, encompassing both exhilarating highs and disheartening lows. Susan grappled with illness, navigated the language barrier, wrestled with cultural dissonance, and felt vulnerable to exploitation as an unsuspecting tourist. These encounters shaped the travel articles she wrote along the way.

The voyage from New York to England took five days. Susan’s battle with seasickness began immediately, aggravated by the vessel’s less-than-ideal conditions. “The table is vile, the ship dirty, pillows the size and softness of brickbats, no accommodation of any sort,” lamented Susan in the letter to Joanna. Lew’s attitude did not help Susan any. As she put it, Lew thrived on “various poisons,” and was “oblivious to everything about as if he was in the den

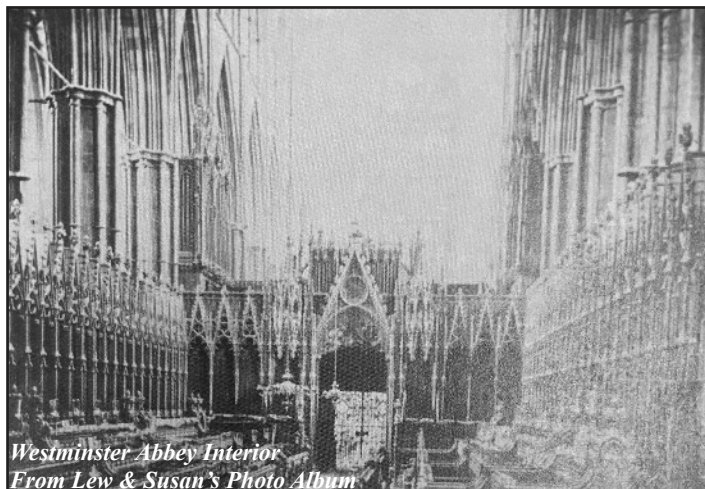
at home.” Lew had travelled throughout much of his life, Susan not so much. As soon as Susan began to feel better, the mood was dampened by the depressing news that President Garfield had been shot.

Upon their arrival, the spirit of enthusiastic tourists ignited within them both. In London, they visited Buckingham Palace and Westminster Abbey; soaking in the grandeur. Their journey continued across the English Channel to Paris, where Lew and Susan immersed themselves in the exuberance of Bastille Day celebrations and explored cultural treasures such as the Louvre, Notre Dame, and Napoleon’s Tomb. Susan captured her first impressions thus far, “Everything here looks so solid, so old, and well built, as though made to last.” Amidst their sense of wonder, Susan couldn’t shake her sense of vulnerability as a novice tourist. Conversing with shopkeepers, restaurant staff, and taxi drivers proved challenging, fostering a persistent sense of being taken advantage of. The tour of London and Paris, though magnificent, was already

wearing on the homesick Susan in a letter to her son Henry, “These are the longest two weeks I have ever spent.”

From Paris, Lew and Susan trained to Marseille, from which a steamship sailed them into the Mediterranean Sea. They circumnavigated the Italian peninsula before pressing onward towards the ancient city of Constantinople. Susan’s fascination with the Mediterranean ran deep; she referred to it as the ‘Storied Sea,’ the very waters where Ben-Hur had toiled as a slave. Susan’s captivation met an abrupt end as a ferocious storm threatened their passage through the Dardanelles Strait.

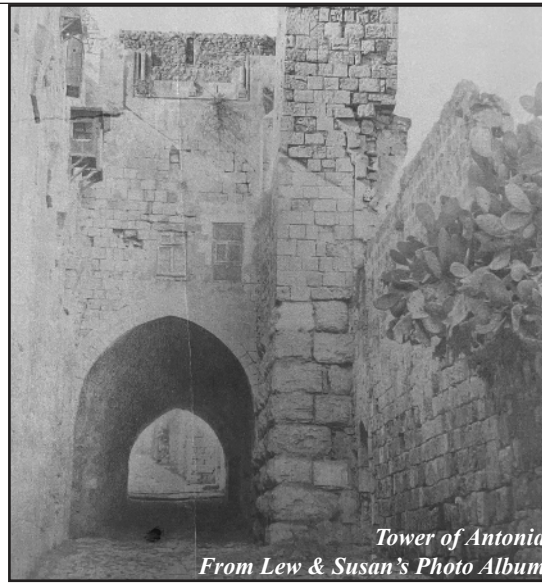
The downpour was heavy as they disembarked from their vessel and sought refuge for the night. When Lew and Susan awoke the next morning, they found themselves enthralled by the vibrant cityscape. Countless boats traversing the Bosphorus River, and the city adorned with ornate minarets and domes, creating a truly distinctive aesthetic. To the south was the charming gateway to the Sea of Marmara, while to the north, the river meandered through mountainous terrain toward the Black Sea. For Susan, however, the unparalleled beauty was marred by the relentless heat and repulsive stench shrouding the city. From the pungent aromas of street food to the lack of personal



*Westminster Abbey Interior  
From Lew & Susan's Photo Album*

hygiene, the plethora of new odors proved unbearable.

After a year of acclimating to life in Turkey, Lew and Susan were ready for a break. Lew took a leave of absence from diplomatic duties and they travelled to the Holy Land. Accompanied by armed calvarymen for protection, the Wallaces rode through the Jaffa Gate to see sacred sites such as David’s Tower, and Rachel’s Tomb. They continued to Bethlehem. Susan tried to imagine what Mary and Joseph would have seen there, but the streets were “filthy” and “filled with beggars.” From Bethlehem they rode to the Dead Sea and



camped at Jericho. On their way back to Jerusalem, the Wallaces encountered a group of lepers at the Tower of Antonia. Susan describes, “with wiry matted hair, sprang from the hedges,

and held out hands from which joints had rotted off, lifted up arms without hands...for an instant the feeling that creatures... had burst out of their graves...” She believed the disease would take more than the miracle in *Ben-Hur* to heal.

The endless highs and lows of Susan’s travels to the old world, though strenuous, proved fruitful, offering an abundance of material for her writing. Susan’s books, *The Storied Sea, Along the Bosphorus*, and *Repose in Egypt*, were composed of articles and essays she had written while travelling with her husband.

**General Lew Wallace deserves his place in history. Help us preserve that place.**

Membership to the **Lew Wallace Study Preservation Society** begins with your annual contribution of \$25 or more. Membership offers discounts and complimentary admission and event tickets.

**Lieutenant Level—\$25 (Individual)**

- Complimentary admission for 1
- Subscription to newsletter

**Major General Level—\$50 (Family)**

- Complimentary admission for family
- Subscription to newsletter

**Governor Level—\$100 (Sustainer)**

- Major General-level benefits, plus
- 10% discount in museum shop



**Ambassador Level—\$250 (Benefactor)**

- Governor-level benefits, plus
- 2 tickets to the annual Taste of Montgomery County

**Ben-Hur Level—\$500+ (Patron)**

- Ambassador Level benefits, plus
- 1 ticket to the annual Holiday Tea

Name \_\_\_\_\_  
 Address \_\_\_\_\_  
 City \_\_\_\_\_ State \_\_\_\_\_ Zip \_\_\_\_\_  
 Phone number \_\_\_\_\_ e-mail \_\_\_\_\_

Please clip & mail your membership information to LWSPS, PO Box 662, Crawfordsville, IN 47933

- Enclosed is my check payable to the Lew Wallace Study Preservation Society
- I will pay with credit card online  
 Please visit [www.ben-hur.com/join-support](http://www.ben-hur.com/join-support) to pay for your membership with a credit card via Paypal
- I wish to remain anonymous
- I’m declining benefits, making my contribution deductible to the full extent of IRS regulations.

# TASTE! 2023 A TREMENDOUS

Saturday, August 26, 2023, was a beautiful day for the 17th annual TASTE of Montgomery County! Happily a string of very hot days during the week broke on Friday afternoon and the weather on Saturday was sunny and warm—but not blistering!

Three musical acts entertained guests from the stage. The Elizabeth Lee Band opened the TASTE with chill covers from the sixties to the present. At 4:30 the Midtown Mad Men delivered a foot-tapping show that fully engaged the audience. Their selection of vintage rock and roll was a hit with the crowd. Headlining at 8 pm was Josh Kaufman and his back-up band, with a very personal blues-tinged rock set. Josh was the winner of season six of *The Voice* and brought every bit of that talent to Crawfordsville.

In addition to the three bands on stage, this year we offered two additional performances on the lawn in front of the Study. At 3:15 the remarkable Emery Allen sang and played the guitar, performing a variety of tunes—some of her own composition. Finally, The Bumps, a favorite local band, played with great energy to the delight of the crowd at 6:45.

Vendors this year included: China Inn, Coal Creek Cellars, Crawfordsville Country Club, Four Seasons, Greek's Pizzeria, Jarocho Minimarket-Wokomole, Jesús Kettle Korn,

Juniper Spoon, Klooz Brewz, Messer's Bar & Grill, Sunshine in a Box, and finally The Warehouse Bakery.

Every year we give awards to our vendors, aided by voting from our attending public.

## People's Choice Voting

**Best Entrée** –

Sunshine in a Box

**Best Side Dish** –

Four Seasons Local Market

**Best Dessert** –

The Warehouse Bakery

The Lew Wallace Study thanks the Title Sponsors of this year's event: Acuity Brands; Everwise Credit Union; Henthorn, Harris & Weliever; Hoosier Heartland State Bank; Dr. Howard Miller; Market Street Wealth Management; Montgomery County Tourism Commission; Nucor Steel Indiana; The Paper of Montgomery County; and Tri-County Bank & Trust.

Contributing Sponsors were: Allen Monument Company; Journal Review; Rusty Carter; Cook Home Services; nPrint; Sanders Funeral Care; Valero Renewables Linden; Wabash College; Walden Transport & Recycle; Crawfordsville Radio: 106.3 Country for the Heartland, Thunder 103.9, and Cool Oldies 1550 AM.

Supporting Sponsors were: Arni's of Crawfordsville; Arthur's Excavating & Farm

Drainage; Burkhart Funeral Home; Crawfordsville Oral Surgery; Gobel, Justice & Pyle; Gould Body & Paint; Indiana American Water Co., Inc.; Industrial Federal Credit Union; Juniper Spoon; Lakeside Book Company; Esther Thornton and Alvin Lee; Morrison Realty; Northridge Chiropractic; Pace Dairy; Sugar Creek Eyecare; Swift Land Consulting; and Taylor, Minnette, Schneider, & Clutter, P.C.

And of course we couldn't make the TASTE happen without the support and dedication of our wonderful volunteers. Thank you to each person who showed up to donate your time and energy to this year's TASTE!

Proceeds from the TASTE go toward funding educational programs, outreach events, and preservation projects. Attendees are able to support the Study while enjoying wonderful local food and music. Make sure you mark **August 24, 2024**, on your calendar for the next TASTE of Montgomery County! You can keep up-to-date on TASTE news at the Facebook page here: [www.facebook.com/TasteOfMontgomeryCounty.com](http://www.facebook.com/TasteOfMontgomeryCounty.com)



# 2023 LEW WALLACE HOOSIER AUTHOR FAIR

Each year, the General Lew Wallace Study & Museum hosts a gathering of regional authors for the Lew Wallace Hoosier Author Fair. The event is free and open to the public. Authors will have their books and book related merchandise for sale and are happy to sign copies and chat with readers.

This year the Hoosier Author Fair is on Saturday, November 25, 2023 from 5 - 8 p.m. on the third floor of Fusion54, located at 101 W. Main Street.

Each author is responsible for taking payments, so readers should bring cash as well as credit cards.

**2023 Authors as of Nov. 1**  
Attending authors represent several genres of writing, including science fiction, fantasy, romance, Indiana history, nonfiction, poetry, mystery, and Christian living.

**Laura VanArendonk Baugh** is an award-winning writer of speculative fiction, mystery, and non-fiction. Her works have earned numerous accolades including praise from *Publishers Weekly*. Laura enjoys hiking, and chocolate.

**Ray E. Boomhower** is senior editor at the Indiana Historical Society Press, where he serves as editor of "Traces of Indiana and Midwestern History." He has written extensively about Indiana history. His books

include *Indiana Originals: Hoosier Heroes and Heroines*; *The Sword and the Pen: A Life of Lew Wallace*; and *To Be Hoosiers: Historic Stories of Character and Fortitude*.

**Josh A. Brewer** studies part time with Harvard University (DCE) and currently serves as visiting faculty at Purdue University. He has taught writing at the University of Miami, University of South Carolina, Tennessee State, and Aquinas College. His work appears in *Harvard Rev.*, *RHINO*, *Poetry Quarterly*, *Natural Bridge*, *Booth*, *Southeast Rev.*, *Yemassee*, *Poets Against War*, and *Sargasso*, as well as other fine venues. He published a book, *Writers Resist*, with Chatter House Press (2017).

**Tony Brewer** is a poet and audio artist from Bloomington, Indiana. He is executive director of the Spoken Word Stage at the 4th Street Festival and co-producer of the Writers Guild Spoken Word Series. He has published 8 books, including *Homunculus*, *Pity for Sale*, and *psithurism*. Tony has been offering Poetry On Demand at coffeehouses, museums, cemeteries, churches, bars, and art and music festivals for over a decade, and is a frequent collaborator with experimental music & field recording collective Urban Deer.

**Stephanie A. Cain** writes epic & urban fantasy novels. She grew up in Indiana, where much of her urban fantasy is set. Stephanie is a proud crazy cat lady. Her books include the *Storms in Amethir* series, the *Circle City Magic* urban fantasy set in Indianapolis, and several anthologies. She will also be selling copies of *New Richmond, IN: A History of the Greatest Little Town on Earth*, by her grandmother, Phyllis Way Boone.

**Julie Jones** is an established Reiki Master Holistic Healer and has done remote work both globally and in many parts of the world. She is a singer-songwriter for the band Remote View, where she is one of two guitarists. Julie has worked independently in antebellum and French antiques as well as in photography and design. *The Plantation* is her first novel.

In his 2021 Illumination Award silver medalist debut novel, *The Confessions of Adam*, a retelling of the universal and dramatic narrative that opens the book of Genesis, **David J. Marsh** has crafted a richly imagined story of the creation and its aftermath. Dave is also the author of *A Conversation on Genesis 2-4*. His second novel is anticipated in Fall 2023. David has taught at Grace College and facilitates the Westside Writers Workshop. David lives in Avon, Indiana, with his wife Cyndi.

## LEW WALLACE AUTHOR FAIR CONTINUED

**Tom Pado** will be featuring his book *Damn the Pressure, Full Speed Ahead*. His many credentials includes military service on a submarine, diving research, engineering projects, and sports. He is the founder and CEO of Total Marine Technology, a company that manufactures subsea robots for the oil and gas industry.

**Agata Izabela Brewer** was born and raised in Poland. She is a teacher, a mother, an activist for immigrant rights, and a Court Appointed Special Advocate. Agata is a Professor of English at Wabash College. Her creative writing has appeared in *Guernica* and *Entropy*. *The*

*Hunger Book: A memoir from Communist Poland* is her first book of creative nonfiction. It was a winner of the 2022 Gournay Prize.

**Jasmine Hulwood** is a Christian author who writes books that are uplifting and honest. Her first two novels were *Operation: Angel of Mercy* and *Loving Sarah*. Jasmine likes to read, watch movies, and spend time with family and friends.

**Tanya Milano Snell** is a certified Purejoy Parent Coach. She spent over 15 years as an early childhood and environmental education

teacher. Tanya decided to leave the classroom and pursue work aligned with her values. She is known for her sense of adventure, compassionate heart, and deep curiosity. She has contributed to the book *Becoming the Big Me: The Great Conquest*, a collection of empowering stories.

**John Uskert** has a passion for writing. A lawyer, John has used his skills of communication and persuasion to be a ghost writer for a legal publishing company. He writes with zeal and fervor. He has written essays, short stories, and his book *Danos: Surviving the Orphanage*

---

## GENERAL LEW WALLACE STUDY & MUSEUM CONTRIBUTIONS RECEIVED JULY 1, 2023 THROUGH OCTOBER 15, 2023

*Every member and donor matters a great deal to us and we appreciate your support. We have made every attempt to ensure the accuracy of this list. If we have made an error in your listing, please contact us immediately.*

### Memberships

#### Ben-Hur:

Farzaneh & Phil Boots  
Elaine & Rick Chase  
Linda & Dale Petrie

#### Ambassador:

Wanda & Dan Bennett  
Diane Kreisher  
Ruth Ann & Edward Quick

#### Governor:

Nancy & Larry Bennett  
Jessica & Brent Bokhart  
Joyce & Patrick Burnette  
Betty & John Culley  
Jamie & Scott Douglass  
Monica Grant  
Judy Michal  
Suanne & Tom Milligan

Mary Ann & Morris Mills  
Paul Moehling  
Sally & Scott Molin  
Donald Rerick  
Suzanne & Dennis Slovacek  
Eatha & Chuck Sommer  
Patty & Jon Sommer  
Cindy & Jerry Smith  
Gary Thompson

#### Major General:

Rachel & David Brown  
Leslie & Joe Day  
Dorothy & Lyle Fogel  
Peggy & Tobey Herzog  
Kathy & Bob Keck  
Anne & Justin Kingery  
Kim & John Roberts  
Jane Schultz  
Beth & Jim Swift

Leslie & Charlie Warren  
Nancy & William White  
Beverly & Jack Wyatt

#### Lieutenant:

Mary Ann & Jerry Day  
Susan & Robert Miller  
Karen & Michael Patton  
Ed Pease  
Marilyn Smith  
Charles Spurgeon

#### Annual Fund:

Johanna Herring  
Ruth Ann & Edward Quick

#### Adopt-A-Spot:

Edward & Ruth Ann Quick





# STUDY SCRAPBOOK



*"Autumn Brilliance" Serviceberry*



*1925 Ben-Hur Showing at Wabash College*



*Morning Sun on the Study*



*Elizabeth Lee Band Taste! 2023*

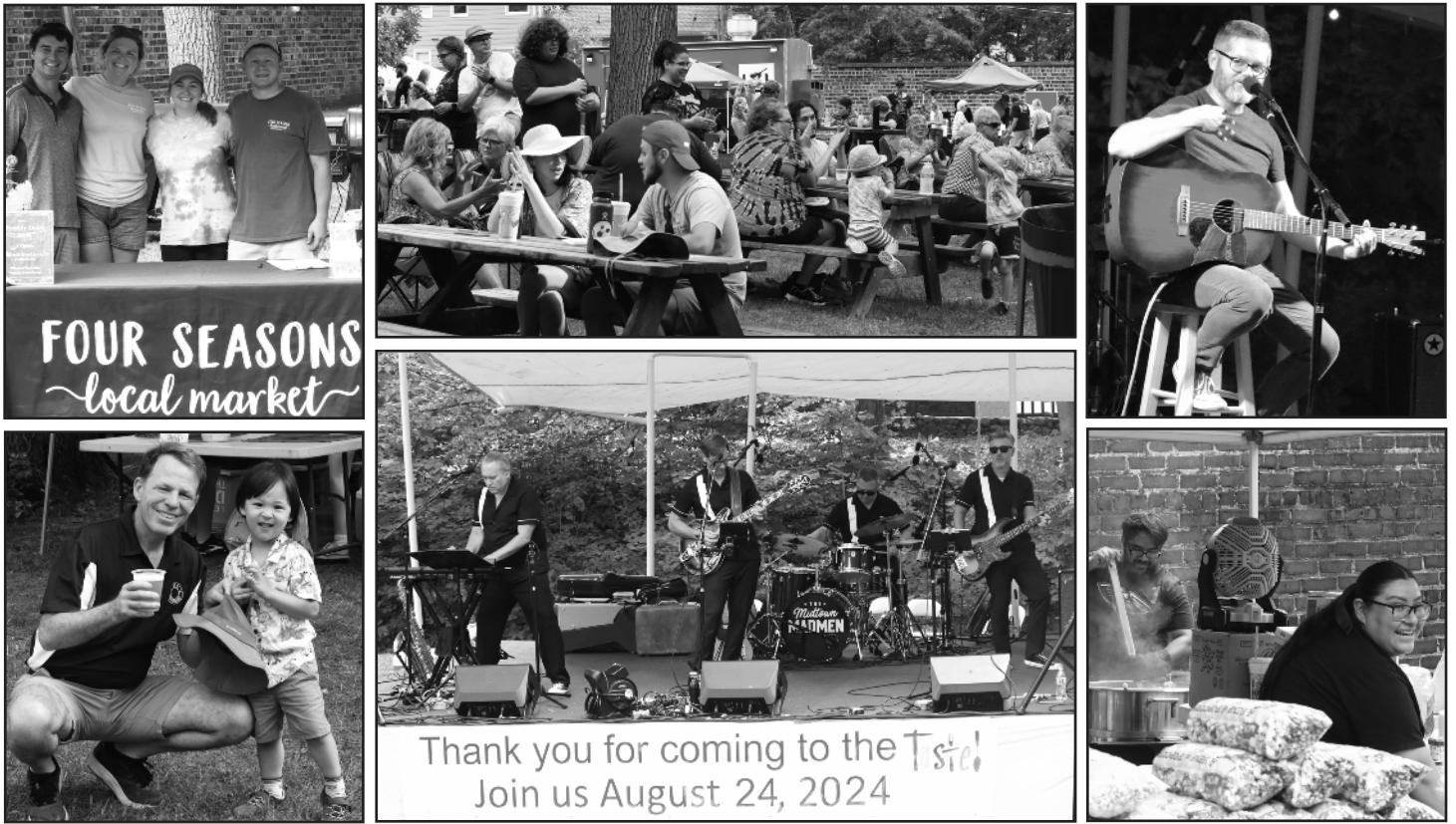


*American Hornbeam*



*Little Orphan Annie Film Preservation Lecture*

# TASTE! 2023 PHOTOGRAPHS



## VOTE FOR NEW BOARD MEMBERS

It's time again to approve the slate for the Society's board of trustees. This group provides governance for the General Lew Wallace Study & Museum on behalf of the City of Crawfordsville, which owns the site. Individuals are slated each year for election on a rotating basis. Once elected, the term is three years with eligibility for two consecutive terms. Below is the ballot that we ask you to complete, detach, and mail back to the museum by December 15, 2023.

Your participation in this election is greatly appreciated! Thank you.

-----  
**OFFICIAL LEW WALLACE STUDY PRESERVATION SOCIETY BALLOT**

Member Name: \_\_\_\_\_

2023 Slate: Nominees for first (three year) term: Jessica Bokhart \_\_\_\_\_ Evan Miller \_\_\_\_\_

Nominees for second (three year) term: Nicole Hazlett, Byron Thada

\_\_\_\_\_ Yes, I approve the slate of candidates.      \_\_\_\_\_ No, I do not approve the slate.

Write in Candidate(s): \_\_\_\_\_

Please mail your ballot to LWSPS, PO Box 662, Crawfordsville, IN 47933 by 12/15/2023

## FROM THE ARBORETUM

*Deb King*

*Grounds Manager*

The summer has come and gone, and crisp mornings of fall have arrived. This summer has been both busy and eventful. The wonderful spring weather, followed by a hot and dry summer, had fall arriving with little fanfare... and very little rain. The front lawn is recovering from The 2023 Taste of Montgomery County and all of the gardens are showing signs that a frigid winter is 'just around the corner'.

Fall preparations have begun with the rejuvenation of the Moat garden. In historic photographs, Lew Wallace planted this garden with a wide variety of plants throughout the years. The current Moat garden was developed and planted in July of 2013.

The Water Babble garden is filled with garden phlox. While great in this garden, phlox has overtaken the smaller circle of the Moat garden. Hostas, daylilies, Monarda, and black-eyed Susans were overshadowed by the taller and more robust phlox and suffered.

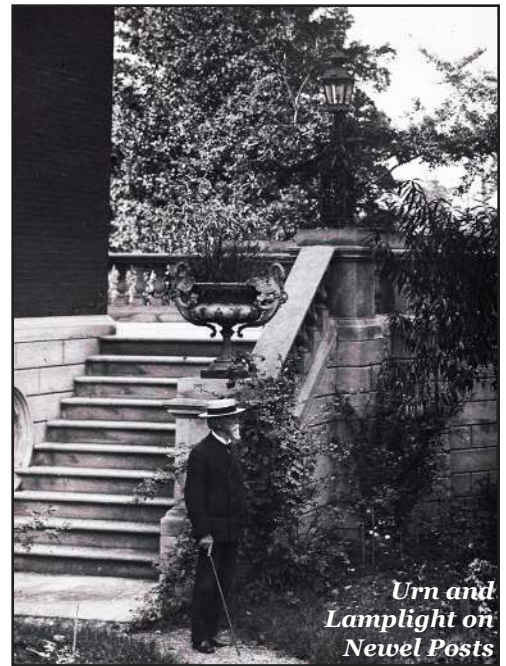
The large circular Moat garden, filled with bee balm, daisies, coneflower, liatris, and milkweed was overrun by lirioppe. The perennials are being dug up and planted in a 'holding garden' and the lirioppe will be removed. Lirioppe is a great plant but the old adage-'right

plant, right place' holds true for this garden. Bricks will be used to edge this garden. Historic photos will be studied and a list of perennials will be compiled. Over the winter, a landscape design will be drawn and implemented in spring of 2024.

In the early 1900's, an ornate cast iron urn and an elaborate gas lamplight overlooked the Moat garden. The urn, with decorative heron handles, was placed on the newel post of the terrace stairs. At the top of the stairs to the back terrace, is the cast iron gas lamplight. The Museum's long-term wishlist includes restoration of these cast iron pieces that graced the property.

Thanks to a generous donation, we hope that the urn and lamplight will be restored in the near future! The Reflecting Pool urn was restored in 2018 and we are in contact with the same company in hopes they will restore the heron urn and gas lamplight.

Winter at the Museum will not be an idle one as there are many plans still needing organized and finalized. The 2024 calendar is being filled from February to December with exhibits, lectures, events and great gardens!



*Urn and  
Lamplight on  
Newel Posts*





**GENERAL LEW WALLACE STUDY & MUSEUM**

200 Wallace Avenue / PO Box 662  
Crawfordsville, Indiana 47933  
Phone: 765-362-5769  
Email: [study@ben-hur.com](mailto:study@ben-hur.com)  
[www.ben-hur.com](http://www.ben-hur.com)

PRSR STD  
Nonprofit  
US Postage Paid  
Crawfordsville IN  
Permit No. 8

**RETURN SERVICE REQUESTED**

## Holiday Tea Schedule of Events

FRIDAY, DECEMBER 1, 2023  
3:00-6:00 p.m.

Tea, Sweets, and Savories Served  
Door prize drawings  
Throughout the Afternoon

*healthcliff* Fashion Show  
3:30-5:00 p.m.

Live holiday music with the  
Wabash College Glee Club  
5:15 p.m.

## Holiday Tea Sponsors

AS OF NOVEMBER 2

ROSELIE BAMBREY; CHUCK BEEMER *IN MEMORY OF NANCY BEEMER*;  
NANCY BENNETT; FARZANEH BOOTS *HONORING HELEN HUDSON*;  
JOYCE BURNETTE; CATHY CALDWELL *IN MEMORY OF DEBRA K. STONEBRAKER*;  
KATHY CARTER; ELAINE CHASE *HONORING HELEN HUDSON*; LINDA CHERRY;  
BETTY CULLEY; LESLIE DAY; JAMIE DOUGLAS; SHEILA EVANS *IN MEMORY OF*  
*JANE H. FOSTER*; ERIN GOBEL; SHERRY HARRIS *HONORING NAOMI MITCHELL*;  
SUSIE HILDEBRAND *IN MEMORY OF FERN BRILL*; DEE HOHLBEIN;  
CAROL HOMANN *HONORING JEAN WILLIAMS & JANICE CLAUSER*;  
HELEN HUDSON *HONORING CCSC, BRENT BOKHART, NATE O'NEAL & CLYDE RAGER*;  
TERESA HUXHOLD *IN MEMORY OF JULIA WICKS*;  
CHERYL KEIM *IN MEMORY OF CINNAMON CATLIN-LEGUTKO*;  
TERRY LAWRENCE *IN MEMORY OF MARGARET ZIMMERMAN*; MARY ANN MILLS;  
RHONDA MITCHELL; LINDA PETRIE; KATHY STEELE;  
JAN VAUGHN-HORNER; JERILYN YERKES

A SPECIAL THANK YOU TO  
CRAWFORDSVILLE COMMUNITY SCHOOL CORPORATION