



Join us for the 14th Annual TASTE! of Montgomery County



Stephanie Cain
Visitor Services

The fourteenth annual TASTE of Montgomery County returns to the Study grounds on Saturday, August 28 from 12:00 - 10:00 p.m.! Museum staff, the TASTE Committee, and other dedicated volunteers are hard at work preparing for our largest fundraising event.

This year the TASTE will feature three live musical acts.

country and breathes a rocking new life into them. Performing rock you back to the old country!



Inside This Issue

Notes from the Director	2
Fall Programming	6
From the Gardens	7
Study Scrapbook	8
Wall Update	9
Donor Recognition	10
Events Calendar	12

The General Lew Wallace Study & Museum is deeply committed to the protection and preservation of Lew Wallace's legacy now and for generations to come.

Mission

The opening band (1 – 3 p.m.) is making a return performance after playing at the 2018 TASTE. Highland Reign consists of Leslie Miller, Patrick Norris, and Sarah Yingst. An international touring Scots American folk rock band from Indianapolis, Highland Reign takes the tunes of the old

traditional songs such as “My Heart’s in the Highlands,” originals like “Kirk in the Heather” and “The Streets of Edinburgh,” and many more, Highland Reign has become one of America’s favorite Scottish folk rock bands. With wailing bagpipes/guitar tunes, lilting fiddles, and upbeat vocals, Highland Reign will

The second band, playing from 4:30 – 6:30 p.m., is War Radio. Joel and LaToshia Everson will be joined by band members Lorin Lemme, Jay Kirkpatrick, and Kevin Killeen. Hailing from Greencastle, War Radio is a local favorite!

And topping off the evening will be

cont. on page 3

Board of Trustees

President
J. Lamont Harris

Vice President
John Culley

Treasurer
Dale Petrie

Secretary
Jessica Bokhart

Ex Officio
Fawn Johnson

Joey Gerold

Nicole Hazlett

Judith Kleine

S. Chandler Lighty

Susan Rosen

Byron Thada

Gerry Turner

Bronwen Wickkiser

Museum Staff

Director
Larry Paarlberg
lpaarlberg@ben-hur.com

Associate Director
Amanda McGuire
amcguire@ben-hur.com

Visitor Services
Stephanie Cain
scain@ben-hur.com

Grounds Manager
Deb King
dking@ben-hur.com

765-362-5769

Notes From The Director



Just over 100 years ago, Warren G. Harding campaigned for president of the United States on a “return to normalcy.” As vaccinations increase across the country and the number of cases of Covid-19 decline, we are beginning to see a modern return to normalcy. Just what this new “normalcy” will look like is being assessed and studied by agencies across the country. At the General Lew Wallace Study & Museum, we are again fully open for tours, masks encouraged but not required. Programs are being scheduled for the fall of 2021. Our fundraisers, the TASTE of Montgomery County and the Holiday Tea and Fashion Show, are back on the calendar.

Although programs are scheduled and fundraisers will happen, there will still be some changes. At the TASTE there will be sanitizing stations, tables will be spread farther apart, and other arrangements will be made to maintain social distancing as much as possible. Even with these changes, we anticipate that the TASTE will

be the community celebration that people have come to love. We welcome its return and hope to see everyone there.

While our programs will see limitations on attendance, again so that social distancing can be encouraged, we look forward to bringing to the community some unique educational offerings. The programs we are hosting this year have been selected to support our 2021 exhibit entitled *Versatile Genius: Lew Wallace's Creative Endeavors*. See page 6 for more information about our scheduled programs and keep checking our website and Facebook page for updates!

Cultural institutions were very hard hit during the pandemic but most continued to operate at some level. At the General Lew Wallace Study & Museum, we were closed to the public for three months and saw limited tourism upon reopening. We used that down time to address issues and concerns that we generally don't have time for, so it was a productive year for us. But a return to normalcy is certainly welcome! Some institutions, such as the Indiana Historical Society, developed specific programs to record the impact of the pandemic so that future generations will have first-person accounts of the situations they faced. Throughout this period, museums retained their position as among the most trusted sources of information—both in terms of content and in terms of

impartial presentation. With that reputation of honesty and integrity for cultural institutions in mind, I might be about to burst some bubbles!! Warren G. Harding popularized the word “normalcy” and is given credit for originating the term. But to be honest, the word was first recorded in 1855, ten years before Harding was even born. Prior to the 1920 campaign, it was a seldom used mathematical term. Harding did popularize the word and changed its meaning by stating

that he was *“for normal times and a return to normalcy”* as he campaigned for president in the wake of World War I. Even in 1920, many people thought that Harding had made up the word and he was often ridiculed. A columnist in the New Orleans *States* newspaper wrote: *“The friends of Senator Harding are defending his language now by saying that ‘normalcy’ is a perfectly good word. Well, so is jackassical, when applied to fantastic verbiage.”*

As we begin to share the Museum grounds and Study with visitors from around the country, we look forward to Montgomery County and Indiana returning to something that resembles normal operations. We hope that our members will visit the Carriage House to see the 2021 exhibit, will join us as we resume our in-person educational programs, and will take part in both the TASTE and in our Holiday Tea.

TASTE!, continued continued from page 1

Strawbury Jam, playing from 8 – 10 p.m. Strawbury Jam is an Indianapolis-based modern country rock band. Mike Christen and Jenn Moe met while playing in a classic rock band. Having played in many bands throughout the years, they both wanted to play country music and had very clear ideas of how they would like to run a band. Neither had the time to tackle the task on their own so Strawbury Jam was created as a partnership using the unique talents and skills of each to launch one of the best modern country bands in Indiana. After the long and arduous task of searching and more searching for the Dream Team, they hit the jackpot! The band consists of 4 mainstay, experienced and very talented performers: Mike, drummer (and vocals), Blake Miller, guitarist, Vince,

bass and Jenn, lead vocalist (and percussion).

In addition to the music, local restaurants, caterers and food vendors will serve up their most delicious



Left: War Radio;
Below: Highland
Reign

delicacies on Museum grounds. Returning favorites include The Juniper Spoon, Sunoco Crawfordsville, and Coal Creek

Winery. A menu will be available to be downloaded from the website before the TASTE.

Advance tickets will go on sale on August 3 in select locations. Visitors can purchase TASTE tickets at the Carriage House Interpretive Center at the General Lew Wallace Study & Museum; the Montgomery County Visitors and Convention Bureau at 101



TASTE!, continued *continued from page 3*

W. Main Street inside Fusion54; Milligan's Flowers & Gifts at 115 E. Main Street; and Crawfordsville Parks & Recreation at 922 E. South Blvd. Advance tickets are \$5 for adults and \$2 for students, and advance ticket holders can bypass the line at the entry gate for quicker admission to the fun. Tickets at the gate will be \$7 for adults and \$3 for students.

Are you interested in attending the TASTE for free? The museum is recruiting volunteers to assist before, during, and after the event. Volunteers get a TASTE t-shirt and free admission to the event. To volunteer, please visit <http://www.tasteofmontgomerycounty.com/volunteers/> and click the "Sign Up Genius" button.

We also invite you to help us spread the word by joining our Street Team. Visit the Street Team page on our website for images that can be shared on Twitter, Facebook, Pinterest, and other social networks, as well as a printable flyer you can send to your friends! Please use the hashtag #TasteMoCo2021 in all social media posts.

A special thanks to the Title Sponsors of this year's TASTE, who donated \$1000 or more: First Merchants Bank, Hoosier Heartland State Bank, Dr. Howard Miller, Market Street Wealth

Management (Jessica Bokhart), Montgomery County Tourism Commission, *The Paper of Montgomery County*, and Tri-County Bank & Trust.



Strawbury Jam, the headlining act at this year's TASTE

The staff and board would like to thank the TASTE Committee in advance for their hard work and dedication to this event: Stephanie Cain, Rusty Carter, Elaine Chase, Erin Gobel, Joey Gerold, Lali Hess, Deb King, Amanda McGuire, Larry Paarlberg, Dale Petrie, and Heather Shirk. A special thanks to this year's committee chair Jessica Bokhart.

The TASTE is the biggest annual fundraiser for the General Lew Wallace Study & Museum. All proceeds from gate sales directly benefit the Museum's collection and programming. Bring your friends and family to the county's biggest

picnic to help support the organization that keeps General Lew Wallace's legacy alive for future generations. For more information about this year's TASTE, visit

TasteOfMontgomeryCounty.com. You can also keep up with announcements and news by following the TASTE on Facebook: www.facebook.com/TasteOfMontgomeryCounty and on Twitter: www.twitter.com/TasteMC.



General Lew Wallace deserves his place in history. Help us preserve that place.

Membership to the **Lew Wallace Study Preservation Society** begins with your annual contribution of \$25 or more. Membership offers discounts and complimentary admission and event tickets.

Lieutenant Level—\$25 (Individual)

- Complimentary admission for 1
- Subscription to newsletter

Major General Level—\$50 (Family)

- Complimentary admission for family
- Subscription to newsletter

Governor Level—\$100 (Sustainer)

- Major General-level benefits, plus
- 10% discount in museum shop



Ambassador Level—\$250 (Benefactor)

- Governor-level benefits, plus
- 2 tickets to the annual Taste of Montgomery County

Ben-Hur Level—\$500+ (Patron)

- Ambassador Level benefits, plus
- 1 ticket to the annual Holiday Tea

Name _____

Address _____

City _____ State _____ Zip _____

Phone number _____ e-mail _____

Please clip & mail your membership information to LWSPS, PO Box 662, Crawfordsville, IN 47933

- Enclosed is my check payable to the Lew Wallace Study Preservation Society
- Charge my gift to (circle one): MasterCard Visa Discover

Card Number _____ Exp. _____ Security Code _____ (3 digits on back)

Signature _____

- I wish to remain anonymous
- I'm declining benefits, making my contribution deductible to the full extent of IRS regulations.

Stay Connected Online:



Fall Programming at the Study

Stephanie Cain

Visitor Services

In-person programming will be making a return to the Museum this fall. The autumn will be a busy one as we feature programming that ties in with our 2021 exhibit “Versatile Genius.”

On Thursday, September 16 we welcome back Suzanne and Jim, who play Civil War era music. Suzanne Jaroszynski blends her rhythm guitar and rich voice with Jim Hale’s claw hammer banjo to involve the audience in a memorable entertainment experience. Suzanne and Jim have enthralled audiences in more than 40 states and Canada, appearing at festivals, concert halls, universities, civic events, community concerts, and museums. They have released 5 recordings. To learn more about Suzanne and Jim, visit www.SuzanneAndJim.com.

The museum will also be participating in Smithsonian Magazine Museum Day Live on September 18. Visitors will be able to download a coupon for free tour admission from the Smithsonian Magazine website, <https://www.smithsonianmag.com/museumday/museum-day-2021/>.

The next week, Thursday, September 23, Jessica Stephens from the Indiana

State Museum’s T.C. Steele Historic Site will give a lecture. Steele spent his childhood in Waveland and worked as a portrait artist in Crawfordsville.



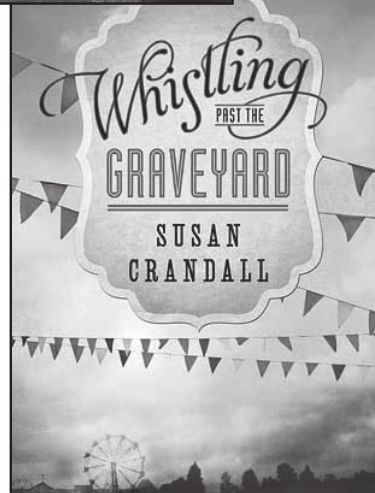
Above: Suzanne & Jim

The following week, Barry Bauman will be presenting “The Conservation of Paintings: Historical and Technical Discoveries.” In 46 years of experience treating and analyzing damaged paintings there have been some stand out moments for Bauman. This presentation reviews seven of these occurrences where a previously hidden piece of the history of art became known. Bauman is the former Associate Conservator of Paintings for the Art Institute of Chicago, followed by two decades as founder and director of his own art conservation company.

The Hoosier Authors Books Club will resume meeting on November 4 to discuss

Whistling Past the Graveyard by Susan Crandall with a hybrid in-person/remote model. One benefit of the pandemic forcing us to go virtual has been the number of out-of-state participants we have added to the book club. While we look forward to meeting in person, we will keep creating Zoom meetings for those who can’t be here.

November also brings the return of our Hoosier Author Fair. Every year for Small Business Saturday, we invite authors from all over the Hoosier state to



bring their books to sign and sell. The popular event moved to Fusion 54 in 2019, providing more space for authors to spread out and socialize.

To stay up-to-date on all our programming, visit our website to sign up for our twice-monthly email newsletter: <http://www.ben-hur.com/about-us/newsletter/>.

From the Gardens

Deb King

Grounds Manager

How quickly the seasons go by! A cold and snowy winter (January/February) that seemed to never end. Then, suddenly, an explosion of GREEN. Spring arrived and things grew overnight. March provided some much-needed warm weather followed by 'above-normal' temperatures in April—that is until the 3rd week when freeze warnings and snow were forecast.

The pots of elephant ears and tropical plants, which are overwintered in the restroom building, were continually hauled in and out, as the weather dictated. Plants are rejuvenated by fresh air and sunshine. Furniture dollies made the transition easier. The old adage "it's safe to plant on Mother's Day" did not hold true for 2021. Mother's Day weekend had frost and freeze advisories. Planting had to wait until the temperatures rose.

The goal every year is to have the gardens planted by Memorial Day. We started planting the week after Mother's Day and finished up just before the holiday. Castor bean, four o'clock, celosia, zinnia, and salvia seeds are sown in the gardens to finish off the planting. The cannas were repeatedly planted due to pesky squirrels. The squirrels do not eat them, they just dig them up.



Monarch butterfly on milkweed

The Terrace garden rehab is ongoing. Numerous hydrangea suckers were removed, Solomon seal thinned out, and hostas divided. Park Day volunteers provided a fresh layer of mulch to the garden. The Siberian iris, divided and replanted last fall, are doing well and bloomed profusely. Planted this spring were white astilbes and a purplish-pink blooming rhododendron. Added to the upper portion of the Terrance garden was a red peony.

The Moat garden, filled with perennials, continues to draw hummingbirds and butterflies. Coneflower, black-eyed susans, liatris, and bee balm attract the wildlife with their color, sweet smelling flowers, nectar, and pollen. In 2020, a new perennial emerged, unplanted by anyone: milkweed.

Milkweed (*Asclepias*) is very common to the Midwest. It grows frequently in fencerows,

fields, pastures, and meadows. The nectar-laden flowers provide food for a multitude of insects. The leaves and sap also provide food. The Monarch butterfly is the most popular insect that visits milkweed.

Milkweed can be difficult to control in a garden. It develops seedpods in late summer. Wind-driven fluffs of seeds burst out and spread the milkweed throughout the area. Milkweed also form rhizome colonies. Rhizomes, also known as creeping rootstalk, grow underground horizontally and have multiple nodes. These nodes develop roots that grow downward and develop stems that become milkweed. Milkweed can become invasive. When removing milkweed from an undesirable location, care must be taken to remove ALL of the rhizomes and root system. Any portion of rhizome left in the ground will develop a stem and the weeding begins again.

Adopt-A-Spot

An award-winning museum like the General Lew Wallace Study & Museum must provide their visitors with a complete tour experience. Historical information, educational opportunities, little known and fun facts about the life of General Wallace—indoors and outdoors.

The Adopt-A-Spot program provides the Museum with the means to accomplish our mission of providing our visitors with a complete museum experience. The AAS program invites businesses, individuals, and community groups to collaborate



with the Museum in maintaining Lew's legacy.

There are thirteen gardens that can be 'adopted' on the 3.5-acre property.

The Wallace garden, anchoring our pedestrian entrance on Wallace Avenue, is just one of the gardens that is available for adoption. The funds raised by the AAS program are used to maintain, enhance, and provide a lasting legacy to Lew Wallace's arboretum.

Thank you to those who have already adopted gardens this year!

- Ellen Ball & Tom Twarek - Susan's garden
- Chuck & Nancy Beemer - Ben Hur garden
- Mike & Diana Beemer - Ben Hur garden
- Roger & Jan Cain - Moat garden
- Rusty & Kathy Carter - Lew Wallace Jr. garden
- Barb & Steve Carver - Tee's garden
- Rick & Elaine Chase - Henry's garden
- John & Betty Culley - Statue garden
- Flower Lovers Club - Moat garden
- Marc & Helen Hudson - Princess Irene's garden
- Suanne Milligan - Water Babble garden
- Edward & Ruth Ann Quick - Old John's garden

Study Scrapbook



Left: Park Day volunteers help clean up the grounds by raking leaves and spreading mulch



Right: Wildlife has enjoyed the grounds including deer, hawks, and groundhogs!

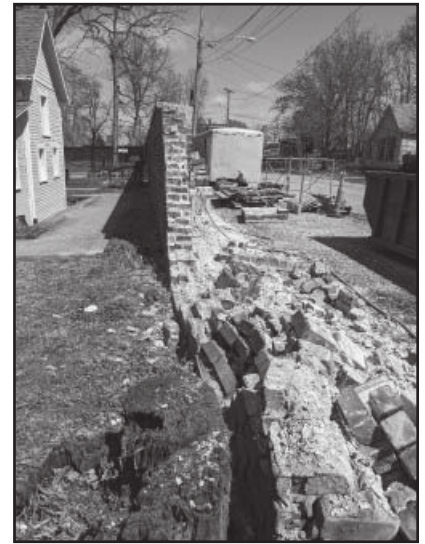
Portion of Brick Wall Restored

Larry Paarlberg
Director

Over the last few years, a fifty foot section of the historic brick wall on the east side of the property along Elston Avenue began leaning significantly. The Lew Wallace Study Preservation Society, on behalf of the City of Crawfordsville, decided to undertake the proper restoration of this section of the wall. Fundraising began in 2019 and was completed in 2021. This allowed the museum to undertake the project this spring, which included dismantling the wall, salvaging and cleaning the Poston bricks, repairing the foundation of this

portion of the wall, removing trees that undermined the integrity of the wall, and then rebuilding the wall using the bricks from 1909 with mortar that matched the original. It was an expensive project, but it does assure the preservation of this landmark feature for the next 100 years.

Thanks to support of generous contributors (see page 11), the Society was able to fully restore the portion of the wall that was leaning badly while an additional 145 feet of the inside of the wall was completely re-pointed using mortar matching the original 1909 mortar.



The wall as it was being taken down in April.



Before



After

Wall along Elston Avenue looking north



Before



After

Inside corner of the wall

General Lew Wallace Study & Museum Contributions

Received October 16, 2020 through June 15, 2021

Every member and donor matters a great deal to us and we appreciate your support. We have made every attempt to ensure the accuracy of this list. If we have made an error in your listing, please contact us immediately.

Memberships

Ben-Hur

Michael & Diane Beemer
Phil & Farzaneh Boots
Rick & Elaine Chase
Deirdre Daly & Alfred Pavlis
J. Lamont & Sherry Harris
Dale & Linda Petrie
Nicholas Ritzmann
James & Debra Rodebaugh
Michael & Gail Stephens

Ambassador

John & Jill Capper
Steve & Barb Carver
John & Betty Culley
Rex & Sandy Henthorn
Sam & Susie Hildebrand
Franklin Moore
Greg & Nancy Morrison
Jerry & Molly Spillane
Tom & Marie Stocks

Governor

Jim & Chris Amidon
James & Patience Barnes
Patrick & Joyce Burnette
Jay Carr
Caroline Claiborne
James Collier
Denny & Carol Cook
Ron & Trudy Dickerson
Scott & Jamie Douglas
Earl & Ruby Elliott
James & Lorena Elmore
Scott & Wendy Feller
John & Terri Gadd
Randall & Lucy Garrett
Jim & Kathy Gary
Monica Grant
David & Sheridan Hadley
Mike & Nicole Hazlett
Scott & Tamara Hemmerlein

Michael Humnicky
Gary & Teresa Huxhold
Brian & Cheryl Keim
Greg & Judi Kleine
Fred & Sally Kreimer
S. Chandler Lighty
Ivan Lancaster
Irmingard McKinney
Dale Milligan
Morris & Mary Ann Mills
Scott & Sally Molin
Jamey & Diane Norton
Scott & Sharon Parker
J. Michael & Diane Quinn
Mike & Meegan Reidy
Donald Rerick
Dotti Sheehan
Dennis & Suzanne Slovacek
Jon & Patty Sommer
Michael & Joanne Spragg
Byron & Karen Thada
Gerry Turner
Larry & Nancy Van Arendonk
Dick & Beth Walker
Mary Weeks & Pete Palfrey
Richard & Nancy Williams

Major General

Larry & Nancy Bennett
Roger & Jan Cain
Rusty & Kathy Carter
Shirley Fruits
Fred Gaske
Herm & Kitty Haffner
Tobey & Peggy Herzog
Ethan Hollander & Christie
Byun
Mary Kummings
William Kummings
Keith & Marian Lindow
Judith Leuck
Dave & Ginny Maharry
Tom Mason & Christine
Guyonneau

Mike & Rhonda Mitchell
Robin & Gail Pebworth
Philip Parks
John & Kim Roberts
Barrett & Janet Robinson
Susan Rosen
Bob & Linda Sabol
Jane Schultz
Harry & Suzie Siamas
Barry & Barbara Virgin
Rodger & Machiel Walther
Andrew & Damaris Zehner
John & Margaret Zimmerman

Lieutenant

Linda Brady
David Chidester
Jerry & Mary Ann Day
Barb Easterling
Richard Frank
James A. Glass
Lee & Rita Kirkpatrick
David & Pat Kruse
Dorothy Lunning
Robert & Susan Miller
Bruce & Linda Novak
Ed Pease
Marty Pool
Tom & Betty Sheets
Sam Smith
Chuck & Eatha Sommer
Joann Troxel
Peter & Bronna Utterback
Terry & Linda Wilcox

Annual Fund

Jonathan & Carolyn Baer
Ellen Ball & Tom Twarek
Chuck & Nancy Beemer
Michael & Diane Beemer
Roland & Wendy Borke
Nancy Bowes

Mike & Jean Bristol
 Richard T. Buck
 Roger & Jan Cain
 Tom & Margo Campanelli
 Terrell Carlisle
 Rusty & Kathy Carter
 Steve & Barb Carver
 Rick & Elaine Chase
 John & Betty Culley
 Richard Frank
 Jim & Kathy Gary
 James A. Glass
 Diane Green
 Susan Henson
 Marc & Helen Hudson
 Aaron & Natalie Hurt
 Betsy Johnson
 Lee & Rita Kirkpatrick
 Blair Miller & Gregory Leddy
 Judy Michal
 Dale Milligan
 Tom & Suanne Milligan
 Greg & Nancy Morrison
 Kenneth & Ruth Ann Newnum
 Jamey & Diane Norton
 Edward & Ruth Ann Quick
 James & Debra Rodebaugh
 Harry & Suzie Siamas
 Michael & Joann Spragg
 Kathy Steele
 Joann Troxel
 Patrick & Chris White
 Flower Lovers Club

Adopt-A-Spot

Ellen Ball & Tom Twarek
 Chuck & Nancy Beemer
 Mike & Diana Beemer
 Roger & Jan Cain
 Rusty & Kathy Carter
 Barb & Steve Carver
 Rick & Elaine Chase
 John & Betty Culley
 Flower Lovers Club
 Marc & Helen Hudson
 Suanne Milligan
 Edward & Ruth Ann Quick

TASTE!

Title Sponsors

First Merchants Bank - Jack
 Wyatt & Joseph Buser
 Hoosier Heartland State Bank -
 Brad Monts
 Dr. Howard Miller
 Market Street Wealth
 Management Advisors -
 Jessica L. Bokhart, CFP®
 Montgomery County Tourism
 Commission
*The Paper of Montgomery
 County* - Tim Timmons
 Tri-County Bank & Trust -
 Terry Dixon & Steve
 McLaughlin

Contributing Sponsors

Arni's of Crawfordsville - Scott
 Kentner & Kyle
 Thompson
 Davis Morrison Realty - Greg
 Morrison
 Henthorn, Harris & Weliever -
 Stu Weliever
 J.M. Thompson Insurance -
 Monte Thompson
 Keller Williams – Dawn Rusk
 NFP Insurance - Tim
 McCormick
 Northridge Chiropractic - Scott
 Molin
 Pace Dairy Foods - Mike
 Shields
 Sanders-Priebe Funeral Care -
 David & Mandy Sanders
 Taylor, Chadd, Minnette,
 Schneider & Clutter -
 Kent Minnette
 Unverferth Manufacturing –
 Dennis J. Hohlbein
 Valero Renewable Fuels—
 Linden - Mary
 Broadstreet
 Wabash College
 Walden Transport & Recycle
 WCDQ–WIMC–WCVL - Dave
 Peach

Supporting Sponsors

Anonymous
 Arthur's Excavation & Farm
 Drainage
 Burkhart Funeral Home
 Crawford Industries
 F.C. Tucker West Central Gould
 Body & Paint
 Indiana American Water Co.
 Industrial Federal Credit Union
 The Juniper Spoon
 Justice & Pyle, Atts at Law
 Lafayette Printing
 Mike Reidy
 Nprint

Wall Restoration

Montgomery County
 Community Foundation
 The Community Fund, The
 Dennis and Dee Hohlbein
 Fund, The Hubert and
 Martha Massing Fund, The
 Gloria and Marvin Oliver
 Fund, and the William and
 Amy Roth Fund
 Chuck & Nancy Beemer
 Marianne Carroll *in honor of
 Howard Miller*
 Rick & Elaine Chase
 James Collier
 James & Lorena Elmore
 Sandy Fanning
 Barbara Ferling
 Elizabeth Justice/Frank
 Howland *in memory of
 Bette Howland*
 Mary Kummings
 Linda Leas
 Howard Miller *in honor of
 Joann Spragg*
 Sue Rickett
 Jerry & Cindy Smith
 Jerry & Molly Spillane
 Gail & Michael Stephens



GENERAL LEW WALLACE STUDY & MUSEUM

200 Wallace Avenue / PO Box 662
Crawfordsville, Indiana 47933
Phone: 765-362-5769
Email: study@ben-hur.com
www.ben-hur.com

PRSR STD Nonprofit US Postage Paid Crawfordsville IN Permit No. 8

RETURN SERVICE REQUESTED

2021 Summer & Fall Events Calendar

July 17 - Take a **Behind the Scenes Tour** of the Study! 10 a.m., 1 p.m., and 3:30 p.m. \$10, reservations required. Ticket sales end July 14. <https://bit.ly/3x3QZd2>

August 28 - The 14th annual **TASTE of Montgomery County** will take place on museum grounds from 12–10 p.m. and feature live music and scrumptious food from local restaurants. Mark your calendars to join us!

September 16 - Suzanne and Jim will present “**Lew and Susan Wallace: Songs of Their Time**” at 7 p.m. Location TBD. Free. RSVP required.

September 18 - Join the museum as we celebrate **Smithsonian Museum Day Live!** Enjoy free admission with a printable Smithsonian pass. See page 6 for more details.

September 23 - Jessica Stephens will present on the life and work of artist T.C. Steele as part of the **Dr. Howard Miller Lecture Series** at 7 p.m. inside the Carriage House Interpretive Center. Free. RSVP required.

September 30 - The **Dr. Howard Miller Lecture Series** continues with Barry Bauman’s presentation, “The Conservation of Paintings: Historical and Technical Discoveries” at 7 p.m. inside the Carriage House Interpretive Center. Free. RSVP required.

November 4 - The **Hoosier Authors Book Club** will meet to discuss Susan Crandall’s *Whistling Past the Graveyard* at 7 p.m. inside the Carriage House Interpretive Center, or via Zoom. Free. RSVP required.

November 27 - **Lew Wallace Hoosier Author Fair** from 4–7 p.m. at Fusion 54.

December 3 - **Holiday Tea & Fashion Show** from 3–6 p.m.