



# Join us for the 12th Annual TASTE! of Montgomery County



## Inside This Issue

Notes from the Director	2
Wallace Book Project	5
Fall Programming	6
From the Gardens	7
History Tidbit	8
ArchiCamp	9
Donor Recognition	10
Study Scrapbook	11
Events Calendar	12

### Stephanie Cain

#### Visitor Services

The twelfth annual TASTE of Montgomery County returns to the Study grounds on Saturday, August 25 from 12:00 - 10:00 p.m.! Museum staff, the TASTE Committee, and other dedicated volunteers are hard at work preparing for our most successful fundraising event.

The TASTE will feature four musical acts this year. Opening the festival from 1:00 - 3:00 p.m. is Highland Reign. An international touring Scots American folk rock band from Indianapolis, Highland Reign takes the tunes of the old country and breathes a rocking new life into them. Performing traditional songs such as “My Heart’s in the Highlands,” originals like “Kirk in the Heather” and “The

Streets of Edinburgh,” and many more, Highland Reign has become one of America’s favorite Scottish folk rock bands. With wailing bagpipes/guitar tunes, lilting fiddles,

p.m. The Half Step Sisters hail from Indianapolis and are Katie Burk and Julia Conway. Their band also includes Douglas Mark Conway and Dan Thompson. Highlighting



*The crowd enjoyed great music and amazing food at the eleventh annual TASTE of Montgomery County in 2017*

and upbeat vocals, Highland Reign will rock you back to the old country!

The Half Step Sisters will be playing their acoustic roots music from 4:30 - 6:30

harmonies and a variety of vocal styles, Katie plays fiddle and Julia is on double bass. They first joined musical forces in 2008 to develop their own take on the folk and acoustic

*cont. on page 3*

**Mission**  
The General Lew Wallace  
Study & Museum  
is deeply committed  
to the protection  
and preservation  
of Lew Wallace’s  
legacy now and for  
generations to come.

## Board of Trustees

**President**  
**Elaine Chase**

**Vice President**  
**Eileen Bowen**

**Treasurer**  
**Dale Petrie**

**Secretary**  
**Anne Kingery**

**Ex Officio**  
**Fawn Johnson**

**Jessica Bokhart**

**Phil Boots**

**Rusty Carter**

**Erin Gobel**

**Brian Keim**

**Jamey Norton**

**Gail Stephens**

**Gerry Turner**

## Notes From The Director



Has anyone else noticed how fast the year is going?! Each year the General Lew Wallace Study & Museum

mounts an exhibit that focuses on a specific issue or event related to the life of Lew Wallace. Over the years, exhibits have considered Wallace's military career, his inventions, the women in his life, his descendants, and themes related to the Study building. We offer programming each year that reflects the selected theme.

For the last two years we have highlighted *Ben-Hur* and its extraordinary impact. In 2017, we looked at *Ben-Hur* as it was featured during Lew's lifetime—the book, magic lantern shows, stage play, Lew's speaking tours, and initial forays into merchandising. This year we are considering the impact of the book and its different presentations to the public—primarily the movies—which brought it to new levels of world recognition.

The programs related to the theme this year included talks by Dr. Howard Miller, retired professor of Religion from the University of Texas, Austin.

This spring Dr. Miller spoke of the silent movie version of *Ben-Hur* in a program entitled: "The 1925 *Ben-Hur*: Epic End to an Era" and then in July he returned with an insightful presentation: "Making and Selling the 1959 *Ben-Hur*."

We will follow up on Dr. Miller's programs with two additional events. We will be hosting Dr. Thomas Slater from Indiana University of Pennsylvania who will be speaking on June Mathis. Ms. Mathis was a woman of extraordinary talent and power in the early years of Hollywood. She was given the assignment to bring *Ben-Hur* to life on film, but was removed from the production during its troubled time in Italy. With her removal from this film, the influence of women in the film industry was forever changed. Another program related to *Ben-Hur* in 2018 will be the showing of the 1925 silent screen epic. This movie will be shown on the Wabash Campus with the sponsorship and support of the Departments of Art, Classics, History and Religion. For all of the awards, majesty, and sweeping drama of the 1959 movie, the 1925 movie is powerful in its own right and worth a viewing!

Keep checking our website and other notices for other programming that we offer. We have additional events

### Museum Staff

**Director**  
**Larry Paarlberg**  
[lpaarlberg@ben-hur.com](mailto:lpaarlberg@ben-hur.com)

**Associate Director**  
**Amanda McGuire**  
[amcguire@ben-hur.com](mailto:amcguire@ben-hur.com)

**Visitor Services**  
**Stephanie Cain**  
[scain@ben-hur.com](mailto:scain@ben-hur.com)

**Grounds Manager**  
**Deb King**  
[dking@ben-hur.com](mailto:dking@ben-hur.com)

**765-362-5769**

scheduled and will be quick to take advantage of other opportunities that present themselves as the second half of 2018 comes our way!

The staff is already beginning to consider our exhibit offerings for coming years as well as programming that we can bring to the community. If you have thoughts on aspects of Lew's life or the museum that you'd like to know more

about, or programs that you'd like us to consider, please feel free to contact me. Much of what we do is based on stakeholder feedback. If you'd like to visit with us, we are available through my email: [Lpaarlberg@ben-hur.com](mailto:Lpaarlberg@ben-hur.com), through our Facebook page on our website, by phone at (765) 362-5769 or EVEN by mail! We look forward to hearing from you—our audience!



*Larry Paarlberg*

## Taste!, continued

roots music they both love. The Half Step Sisters were chosen to perform on NPR's A Prairie Home Companion Duet Competition in 2012. Out of 1,000 applicants nationwide, Katie and Julia placed third.

Our 2018 headliner is no stranger to the TASTE of Montgomery County. Tad Robinson played at our second festival in 2008. Ten years later, he returns with The Tad Robinson Band. Joining him in the band is one of our 2009 musical artists, Gordon Bonham! The Tad Robinson Band includes Gordon Bonham, Jeff Chapin, and Dave Murray, and will be performing from 8:00 – 10:00 p.m.

From his Manhattan roots and his Indiana and Chicago musical upbringing, Tad Robinson has caught the attention of the world with his seven Blues Music Award

nominations and his many recordings, including the song "Rained All Night," which was nominated for Blues Song of the Year at the 2011 Blues Music



Left: The Half Step Sisters  
Below: Tad Robinson

Awards. He's a veteran of countless national and international tours, including many of the most important international blues festivals. Tad ranks as one of the most talented members of the international blues and soul communities.

Because music on the lawn was so popular last year, we will have local violinist Olga

Berezhnaya playing from 6:30 – 7:30 p.m. Olga is a talented and successful Russian violinist-virtuoso. She performed at the Strawberry Festival and the Taste of Tippecanoe this year to great applause, and we're sure her music will set toes tapping on the way to the food tents.

Local restaurants,



caterers and food vendors will serve up their most delicious delicacies on the Museum grounds. Joining the TASTE lineup for the first time are Backstep Brewing Company, High

## TASTE!, continued

Street Bar & Grill, and Shannon Family Farms. Returning favorites include Daredevil Brewery, Darlington General Store, Gigglin Pig, the Juniper Spoon, Norvell's, Shady Rail Farms, and Sunoco Crawfordsville. A menu will be available before the TASTE to be downloaded from the website.

Advance tickets are now on sale in select locations. Visitors can purchase TASTE tickets

at the Carriage House Interpretive Center at the General Lew Wallace Study & Museum; the Montgomery County Visitors & Convention Bureau at the corner of Pike and Water streets; Milligan's Flowers & Gifts at 115 E. Main Street; and Crawfordsville Parks & Recreation at 922 E. South Blvd. Advance tickets are \$5 for adults and \$2 for students, and advance ticket holders can bypass the line at the entry gate for quicker admission to the fun. Tickets at the gate will be \$7 for adults and \$3 for students.

Interested in attending the TASTE for free? The museum is recruiting volunteers to assist before, during, and after the event.

Volunteers get a TASTE t-shirt or three food tickets and free admission to the event. To volunteer, please visit <http://www.tasteofmontgomerycounty.com/volunteers/> and click



*Highland Reign, the opening act at this year's TASTE*

the "Sign Up Genius" button. We also invite you to help us spread the word by joining our Street Team. Visit the Street Team page on our website for images that can be shared on Twitter, Facebook, Pinterest, and other social networks, as well as a printable flyer you can send to your friends!

A special thanks to the Title Sponsors of this year's TASTE, who donated \$1000 or more: Montgomery County Tourism Commission, Dr. Howard Miller, Franciscan Health Crawfordsville/Franciscan Physician Network, Hoosier Heartland State Bank, Keller Williams/Team Rusty, and *The Paper of Montgomery County*.

The staff and board would like to thank the TASTE Committee in advance for their hard work and dedication to this event: Stephanie Cain, Rusty Carter, Elaine Chase, Erin Gobel, Joey Gerold, Deb King, Amanda McGuire, Larry Paarlberg, and Dale Petrie. A special thanks to this year's committee chair, Jessica Bokhart.

The TASTE is the biggest annual fundraiser for the General Lew Wallace Study & Museum. All proceeds from gate sales directly benefit the Museum's collection and programming. Bring your friends and family to the county's biggest picnic to help support the organization that keeps General Lew Wallace's legacy alive for future generations. For more information about this year's TASTE, visit [TasteOfMontgomeryCounty.com](http://TasteOfMontgomeryCounty.com). You can also keep up with announcements and news by following the TASTE on Facebook: [www.facebook.com/TasteOfMontgomeryCounty](http://www.facebook.com/TasteOfMontgomeryCounty).



# Wallace Book Project

For several years, Museum staff has been working hard at editing and formatting Lew and Susan Wallace's books.

Susan's first book, *The Storied Sea* is the record of Susan's 1881 trip with Lew to the Ottoman Empire. Her second book is *Land of the Pueblos*, a collection of her articles on the history of New Mexico, the climate, the geography, and the many cultures who settled there. Her short book *Ginevra*, originally published in 1886, is published with the original illustrations by Lew Wallace.

*The Repose in Egypt: A Medley*, is Susan's account of her visit to Egypt, supplemented with Egyptian history and religious mythology surrounding Jesus, Joseph, and Mary's flight to Egypt. *Along the Bosphorus and Other Sketches*, published in 1898, is Susan E. Wallace's reminiscences of her travels along the Bosphorus and to Italy and England.

*Ben-Hur*, Lew's first novel *The Fair God*, and Lew's campaign biography of Benjamin Harrison have all been published. *The Fair God* is Lew's dramatic account of the Spanish conquest of Mexico.

A two-volume paperback edition of Lew's autobiography is now available as well. Staff is now working on *The Prince of India*, Lew's retelling of the myth of the Wandering Jew.

All books are available as a paperback or e-book through Amazon and as a paperback in the Study's gift shop. Books may be purchased online through our gift shop website <http://www.ben-hur.com/shopping/>.

Stay tuned for more news about this ongoing project!

## General Lew Wallace deserves his place in history. Help us preserve that place.

Membership to the **Lew Wallace Study Preservation Society** begins with your annual contribution of \$25 or more. Membership offers discounts and complimentary admission and event tickets.

**Lieutenant Level—\$25 (Individual)**

- Complimentary admission for 1
- Subscription to newsletter

**Major General Level—\$50 (Family)**

- Complimentary admission for family
- Subscription to newsletter

**Governor Level—\$100 (Sustainer)**

- Major General-level benefits, plus
- 10% discount in museum shop



**Ambassador Level—\$250 (Benefactor)**

- Governor-level benefits, plus
- 2 tickets to the annual Taste of Montgomery County

**Ben-Hur Level—\$500+ (Patron)**

- Ambassador Level benefits, plus
- 1 ticket to the annual Holiday Tea

Name \_\_\_\_\_  
 Address \_\_\_\_\_  
 City \_\_\_\_\_ State \_\_\_\_\_ Zip \_\_\_\_\_  
 Phone number \_\_\_\_\_ e-mail \_\_\_\_\_

Please clip & mail your membership information to LWSPS, PO Box 662, Crawfordsville, IN 47933

- Enclosed is my check payable to the Lew Wallace Study Preservation Society
- I will pay with credit card online  
 Please visit [www.ben-hur.com/join-support](http://www.ben-hur.com/join-support) to pay for your membership with a credit card via Paypal
- I wish to remain anonymous
- I'm declining benefits, making my contribution deductible to the full extent of IRS regulations.

## Fall Programming at the Study

*Stephanie Cain*

*Visitor Services*

At the General Lew Wallace Study & Museum the staff works hard to provide quality educational programming. This year many of the programs have related to *Ben-Hur* to tie in with our exhibit “Lights, Camera, Epic! Ben-Hur on Screen and Beyond.” We have had wonderful attendance at our programs so far, and we have a busy summer/fall schedule lined up!



*Dr. Howard Miller*

Saturday, August 4 at 10 a.m. brings a Behind the Scenes Tour led by Associate Director Amanda McGuire. Visitors will be able to view the Study Basement and our artifact storage in the Carriage House. Tours will be \$7 per person.

Of course Saturday, August 25, brings the TASTE of Montgomery County. For more information read the article on page 1.

September has a full schedule. On Friday, September 7, at 4:30 p.m. we will be celebrating the dedication of our newly-restored Reflecting Pool in the northwest corner of the property.

Thursday, September 13, brings a screening of the 1925 silent *Ben-Hur*, hosted at Wabash College in conjunction with

the Art, History, Religion, and Classics departments.

Thursday, September 20, Dr. Thomas Slater will be joining us from Indiana University of Pennsylvania to discuss June Mathis, the powerhouse behind many silent films of the 1920s, and her involvement in the 1925 *Ben-Hur*.

Saturday, September 22, brings Smithsonian Museum Day Live! Visitors who download and print a ticket from the Smithsonian Magazine’s website (<https://www.smithsonianmag.com/museumday/museum-day-2018/>) will be able to enjoy a free 30-minute tour of the Study.

We are still confirming dates for some of our programming, but we hope to host not one but two Wallace Scholars in October! Plans call for Gail Stephens to join us to discuss the Lincoln Conspirators and celebrate the restoration of Lew Wallace’s painting *The Conspirators*, which will be completed later this summer. Dr. Howard Miller is also planning to

return to conclude our 2018 *Ben-Hur* programming.

Our Hoosier Authors Book Club resumes in October with a discussion of Edwin Way Teale’s memoir *Dune Boy* on Thursday, October 18 at 7 p.m. In November we will read *An American Tragedy* by Theodore Dreiser and discuss it on Thursday, November 2 at 7 p.m. For more information about the Hoosier Authors Book Club, call the museum or check out our website at <http://www.ben-hur.com/programs/hoosier-authors-book-club/>.

November also brings our third annual Lew Wallace Author Fair on November 24. We are still arranging the slate of authors to join us this year, so watch for more information in the next newsletter!

To stay up-to-date on all our programming, visit our website to sign up for our twice-monthly email newsletter: <http://www.ben-hur.com/about-us/newsletter/>.



# From the Gardens

**Deb King**  
**Grounds Manager**

Summertime, and the living is easy....for some! After a cool spring, summer exploded with the third warmest May on record. Torrential rains came in waves and flooded areas were the norm. The Reflecting Pool became a water-filled pond on two occasions, due to the heavy rains. The Pool drained fairly quickly.

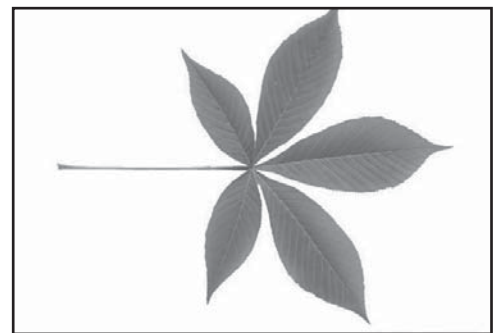
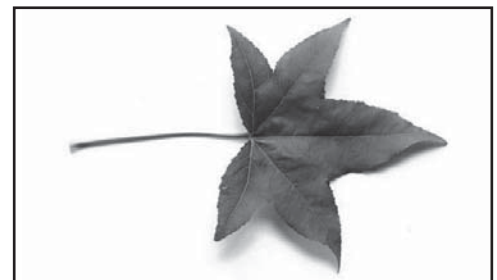
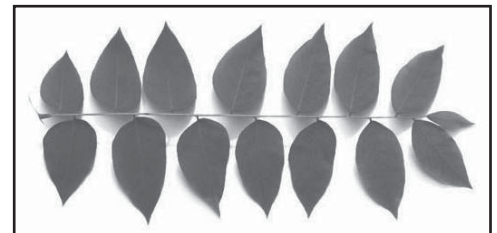


The Reflecting Pool project has kept us very busy and is nearing completion. The planting of the Reflecting Pool was accomplished in a couple of days, thanks to the use of an auger bit and electric drill. Over 400 pots of lirioppe were planted in the interior of the pool. The lirioppe survived the flooding and continues to grow and fill out. Lew Wallace's cast iron urn, restored to its original antique gold color, graces the island of the Pool. The urn is filled with elephant ears, palm, coleus, begonias,

and sweet potato vine. The last pile of soil has been spread over the remaining hillside and the grass seed is sprouting. A gravel path from the moat garden leads the visitor to the Reflecting Pool interpretive sign. A bench on the north side provides the visitor with a great picture of the Pool and Study.

Arbor Day, April 27th, at the Study saw an afternoon of tree planting. Two Kentucky coffeetree, a sweet gum, and two Ohio buckeye trees were planted. The Study has lost some coffeetrees in the last few years and replacements were needed. Earlier this spring, a basswood or linden seedling was planted. A tree planting schedule is being planned and we will continue to plant trees as the unhealthy trees are taken down.

Two years ago it became evident that emerald ash borers were present in Montgomery County. The Study made the decision to try to save our six mature ash trees by having them treated every two years. The second round of treatments was done this summer and we are happy to report that there is no evidence of the emerald ash borer in any of our trees.



*From top: coffeetree, sweet gum, buckeye*

## Stay Connected Online:



wallacestudy



@wallacestudy



wallacestudy

## June Mathis: Hollywood Pioneer

Born in Leadville, Colorado, in 1889, June Mathis was a sickly child who believed she healed herself through sheer force of will. At the age of 12 she began work in Vaudeville and within a few years was a legitimate actress on the stage supporting her twice widowed mother with roles on Broadway. She continued acting until she was in her mid-20s.

Even as she was working as an actress, she decided that she wanted to become a screenwriter. By 1918, she had a formal contract with Metro Studios, the forerunner of MGM. By 1919, she and her mother had moved to Hollywood. June was made head of Metro's scenario department, making her one of the first heads of any film department and the only female executive at Metro.

June's 1921 screenplay of *The Four Horsemen of the Apocalypse* was so impressive that the head of Metro asked for her input on the director and the leading actor. She selected Rex Ingram as the director and for the lead actor a bit player named Rudolph Valentino.

The film made over \$4.5 million in gross domestic receipts and shot Valentino to stardom. As Valentino moved between studios, so did Mathis, solidifying her power. She became the first female executive at Metro Goldwyn Mayer and, at the age of 35, was the highest paid executive in Hollywood.

One of the great film failures of the 1920s was the movie *Greed* directed by Erich von Stroheim. Von Stroheim was one of the most difficult directors in Hollywood. The original version of *Greed* came in at a stunning ten hours. Mathis was brought in to cut it down to a manageable film. The final version

was a complicated 2.5-hour movie that failed artistically and commercially. Time has, however, been kind to *Greed* and it is now a highly considered film.

Mathis was tapped for the development of the 1925 *Ben-Hur*. This troubled production proved to be a turning point in her successful career. Mathis fought for casting rights and insisted that it be filmed in Italy, where she ran into resistance from the original director Charles Brabin and interference from the Italian government. Ninety years later the stories of chaos and fighting on the set are still part of Hollywood lore.

June selected the handsome, relatively unknown George Walsh to play Judah Ben-Hur. The filming in Italy and numerous other complications swamped the project. As the production bogged down, accidents happened, and cost over-runs accelerated, MGM head Irving Thalberg and Louis Mayer took a firm hand. Brabin and Mathis were fired, as were the leading actors. The entire Italian production was dismantled and brought back to Hollywood.

When June returned from Italy, she was engaged to an Italian cinematographer. They were married in late 1924. Released from MGM, she went to work for First National studio as editorial director. She remained at First National for two years but found her responsibilities being increasingly challenged

and she moved on to United Artists—co-founded by that other powerful woman in Hollywood, Mary Pickford. June's last movie was considered one of her best. Released in 1927, it was called *The Magic Flame* and starred Ronald Colman, who gave an outstanding performance.

June Mathis and Rudolph Valentino continue to be linked to this day. When Valentino died unexpectedly in 1926, June offered what she thought would be a temporary solution for his burial when she provided a place in her

family crypt in the Hollywood Memorial Cemetery mausoleum. She had purchased four vaults for herself, her husband, and her parents. Less than a year later, June was attending a performance of *The Squall* on Broadway when she turned to her mother and said: "Mother, I'm dying!" She had

suffered a heart attack at the age of 38. She died in the theater before help could arrive.

Rather than removing Valentino's body from the vault, June's husband had her interred in the vault beside the movie legend and sold the remaining two vaults to Valentino's family. Valentino and Mathis continue side by side to this day. Her husband returned to Italy and slipped into obscurity—reportedly a very rich man thanks to June.





# ArchiCamp a Success!

**Amanda McGuire**  
*Associate Director*

The General Lew Wallace Study & Museum would like to thank everyone who made the year's ArchiCamp a success. The elementary and middle-school aged children who attended had a wonderful time making new friends and experiencing learning in a new way.

On Tuesday, students went on a behind-the-scenes tour of the Study building and learned about Lew Wallace. In the afternoon, the students designed and made plaster blocks and walked downtown to tour the Masonic Temple. We also visited the Carnegie Museum of Montgomery County to learn about the large mural in their entryway.

A special thank you to Judi Kleine for leading the kids on an architectural scavenger hunt at the Masonic Temple! Thank you, also, to Kat Burkhart and

Kathy Brown at the Carnegie Museum for discussing the mural with the kids!

On Wednesday, students created stained glass "windows" using mosaic tiles. We went on a walking tour of Elston's Grove and learned about different architectural styles that were popular in Crawfordsville during Lew Wallace's lifetime. In the afternoon they built and painted their own birdhouses - they were very creative with their paint jobs! Each camper also designed and built their own personal study using recycled materials.



*Judi Kleine shows students the theater in the Masonic Temple*

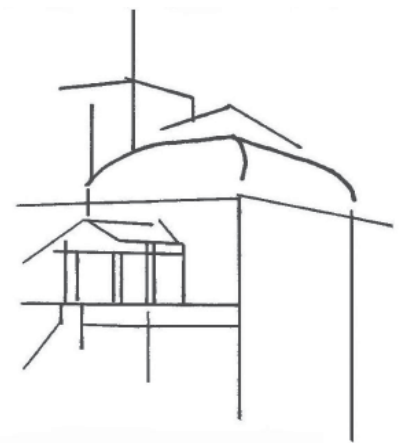
Iota Xi – Gamma Xi Chapter, Fraternal Order of Eagles Aerie 1005, Loyal Order of Moose Lodge 6, Montgomery County Extension Homemakers, Arteffects, Inc., and Marie Stocks.

Also, a huge thank you to Jan Cain for her help throughout the camp!



*ArchiCampers work on their birdhouses*

We would like to thank our sponsors for making this camp possible: American Legion Byron Cox Post 72, Delta Theta Tau – Epsilon Omega Chapter, Montgomery County Retired Teachers Association, Psi



## General Lew Wallace Study & Museum Contributions Received March 16, 2018 through June 30, 2018

*Every member and donor matters a great deal to us and we appreciate your support. We have made every attempt to ensure the accuracy of this list. If we have made an error in your listing, please contact us immediately.*

### Adopt-A-Spot

Richard & Eileen Bowen  
Rusty & Kathy Carter

### Memberships Ben-Hur

Chuck & Nancy Beemer  
James & Lorena Elmore  
Richard & Nancy Williams

### Ambassador

John & Jill Capper  
Franklin Moore  
Jerry & Molly Spillane

### Governor

Roland Borke  
Aus & Lucy Brooks  
Roger & Jan Cain  
Hubert & Dorothy Danzebrink  
Anne T. Drake  
Earl & Ruby Elliott  
Russell & Shirely Fruits  
Jim & Kathy Gary  
Larry & Annette Hutchison  
Terry Lawrence  
Irmingard McKinney  
Jon & Patty Sommer  
Dennis & Suzanne Slovacek

### Major General

Joyce Grimble  
Greg & Missy Redding  
Tom & Marie Stocks  
Paul & Bronna Utterback

### Lieutenant

Linda Brady  
Marla McDaniel  
Mike & Rhonda Mitchell  
Marty Pool  
Marilyn Smith

### Montgomery County Tourism Commission

### TASTE!

#### Title Sponsors

Franciscan Health  
Crawfordsville/  
Franciscan Physician  
Network

Hoosier Heartland State Bank  
Howard Miller  
Keller Williams/Team Rusty  
Montgomery County Tourism  
Commission

*The Paper of Montgomery  
County*

#### Contributing Sponsors

Crawford Industries, LLC  
Elizabeth A. Justice, Att. at Law  
Lafayette Bank & Trust  
NFP Insurance  
Tri-County Bank & Trust  
Valero Renewables - Linden  
Wabash College  
Walden Transport & Recycle  
WCDQ/WCVL/WIMC

#### Supporting Sponsors

Arni's of Crawfordsville  
Banjo Corporation  
Cook Home Services  
Crawfordsville Oral Surgery  
Davis Morrison Realty  
Henthorn, Harris, Weliever &  
Petrie  
Indiana American Water Co.,  
Inc.  
Industrial Federal Credit Union  
J.M. Thompson Insurance  
*Journal Review*  
The Juniper Spoon  
Lafayette Printing  
LSC Communication  
Market Street Wealth  
Management Advisors -  
Jessica L. Bokhart, CFP®

Mike Reidy

nPrint  
Pace Dairy Foods  
Teachers Credit Union

### Other Sponsors

Sugar Creek Animal Hospital

### ArchiCamp Sponsors

American Legion Byron Cox  
Post 72  
Arteffects, Inc.  
Delta Theta Tau Sorority -  
Epsilon Omega Chapter  
Fraternal Aerie #1005,  
Fraternal Order of  
Eagles  
Loyal Order of Moose - Lodge 6  
Montgomery County Extension  
Homemakers  
Montgomery County Retired  
Teachers Association  
Psi Iota Xi - Gamma Xi Chapter  
Marie Stocks



THE UNIVERSITY OF  
**TEXAS**  
AT AUSTIN  
Dr. Howard Miller





# Study Scrapbook



*Clockwise from top right: Dr. Howard Miller's lecture in April on the 1925 Ben-Hur movie; Grounds Manager Deb King helps Vera Gobel plant a tree on Arbor Day; we had some help from the Crawfordsville Fire Department unloading the restored urn; the urn in place and with plantings; ArchiCampers learn about the mural at the Carnegie Museum*



**GENERAL LEW WALLACE STUDY & MUSEUM**

200 Wallace Avenue / PO Box 662  
Crawfordsville, Indiana 47933  
Phone: 765-362-5769  
Email: [study@ben-hur.com](mailto:study@ben-hur.com)  
[www.ben-hur.com](http://www.ben-hur.com)

PRSR STD Nonprofit US Postage Paid Crawfordsville IN Permit No. 8
---

**RETURN SERVICE REQUESTED**

---

## 2018 Summer & Fall Events Calendar

August 25 - The 12th annual **TASTE of Montgomery County** will take place on museum grounds from 12 - 10 p.m. and feature live music and scrumptious food from local restaurants. Mark your calendars to join us!

September 7 - Join us as we celebrate the dedication of our newly-restored Reflecting Pool at 4:30 p.m.

September 13 - Wabash College will host a movie screening of the 1925 silent *Ben-Hur* in Hays 104 at 7:30 p.m. Free. RSVP required.

September 20 - Join us as Dr. Thomas Slater discusses June Mathis and her involvement in the 1925 *Ben-Hur* silent film as part of our **Adult Lecture Series** at 7 p.m. inside the Carriage House Interpretive Center. Free. RSVP required.

September 22 - Join the museum as we celebrate **Smithsonian Museum Day Live!** Enjoy free admission with a printable Smithsonian pass. See page 6 for more details.

October TBA - Dr. Howard Miller will conclude his lectures on the *Ben-Hur* movies as part of our **Adult Lecture Series** at 7 p.m. inside the Carriage House Interpretive Center. Free. RSVP required.

October 18 - The **Hoosier Authors Book Club** will meet to discuss Edwin Way Teale's *Dune Boy* at 7 p.m. inside the Carriage House Interpretive Center. Free. RSVP required.

November 2 - The **Hoosier Authors Book Club** will meet to discuss Theodore Dreiser's *An American Tragedy* at 7 p.m. inside the Carriage House Interpretive Center. Free. RSVP required.

November 24 - **Low Wallace Hoosier Author Fair** from 1 - 4 p.m. inside the Carriage House Interpretive Center.

December 7 - **Holiday Tea & Fashion Show** from 3-6 p.m.