



# FROM THE STUDY



## Ben-Hur Exhibit Opens

*Amanda McGuire*  
Associate Director

The 2018 exhibit “Lights, Camera, Epic! *Ben-Hur* on Screen and Beyond” opened Saturday, March 10 in the Carriage House Interpretive Center. This exhibit discusses the four motion pictures that have interpreted Lew Wallace’s novel as well as other adaptations and merchandise.

Lew Wallace’s *Ben-Hur: A Tale of the Christ*, published in 1880, sold more copies than any other printed work in the 19th century with the exception of the Bible. It was after reading *Ben-Hur* that President James A. Garfield appointed Wallace to be U.S. Minister to the Ottoman Empire. The Broadway play ran for more than twenty years in America and overseas. *Ben-Hur*’s success also

provided Wallace with the necessary funds to build his Study, now a National Historic Landmark.

Harper & Brothers, and the producers of the Broadway play that resulted in a decision by the Supreme Court about copyright infringement as it relates to published works that is still in effect today.



Artifacts from the museum’s collection, including costume pieces from each of the three major motion pictures of *Ben-Hur*, are on display. We also have items on loan from two Wallace Scholars. Dr. Howard Miller and Roger Adams graciously loaned items related to

both the 1925 and 1959 movies as well as other *Ben-Hur* adaptations and merchandise.

While the 1925 and 1959 versions both saw huge success and broke records in the film industry, the 1907 *Ben-Hur* had, perhaps, the biggest impact on the motion picture industry. The 1907 short film by Kalem movie studio led to a law suit filed by Henry Wallace,

“Lights, Camera, Epic! *Ben-Hur* on Screen and Beyond” will run through mid-December. It may be viewed Tuesday through Saturday from 10 a.m. to 5 p.m.

### Inside This Issue

Notes from the Director	2
Art Conservation	3
History Tidbit	4
2018 Programming	6
Wallace Book Project	7
Study Scrapbook	8
From the Gardens	9
Donor Recognition	10
Reflecting Pool Project	11
Events Calendar	12

*The General Lew Wallace Study & Museum*

*is deeply committed*

*to the protection*

*and preservation*

*of Lew Wallace’s*

*legacy now and for*

*generations to come.*

# Mission

## Board of Trustees

**President**  
**Elaine Chase**

**Vice President**  
**Eileen Bowen**

**Treasurer**  
**Dale Petrie**

**Secretary**  
**Anne Kingery**

**Ex Officio**  
**Fawn Johnson**

**Jessica Bokhart**

**Phil Boots**

**Rusty Carter**

**Erin Gobel**

**Brian Keim**

**Jamey Norton**

**Gail Stephens**

**Gerry Turner**

## Museum Staff

**Director**  
**Larry Paarlberg**  
[lpaarlberg@ben-hur.com](mailto:lpaarlberg@ben-hur.com)

**Associate Director**  
**Amanda McGuire**  
[amcguire@ben-hur.com](mailto:amcguire@ben-hur.com)

**Visitor Services**  
**Stephanie Cain**  
[scain@ben-hur.com](mailto:scain@ben-hur.com)

**Grounds Manager**  
**Deb King**  
[dking@ben-hur.com](mailto:dking@ben-hur.com)

**765-362-5769**

## Notes From The Director



2018 will be a year of exciting restorations at the General Lew Wallace Study & Museum. In 2017, restoration work started on Lew Wallace's Reflecting Pool. The pool was located northwest of the Study and Wallace filled it with dirt after he filled in the moat adjacent to the Study because he was fearful that neighborhood children might be attracted to the water feature and have an accident. For over 110 years it remained buried and largely forgotten. In 2017, brothers Chuck and Mike Beemer indicated that they would like to see this important feature on the property brought back to life as a memorial to their parents, Gordon and Julia Beemer. The Beemers had a long history in Crawfordsville—Julia was, in fact, a great granddaughter of Caleb Mills—and the Wallace property has long held a special place in the hearts of the Beemer family.

The restoration of the pool included significant excavation of the fill with a careful archaeological study done in concert with the removal of the dirt. The perimeter brick wall for the pool was beautifully rebuilt by Mike Dowell of Dowell Masonry. Mike installed capstones replicating the original trim used by Wallace. The large urn that stood on the

island in the pool was shipped off for restoration and is scheduled to be returned soon. The site was then regraded to replicate its appearance during Wallace's lifetime. In a concession to safety and maintenance, the pool will be planted in a uniform groundcover and will become a sunken garden rather than refilling the pool with water. This promises to be one of the most important restorations ever undertaken on the property and will do much to enhance its presentation to the public. It also promises to open up new avenues for educating the public on archaeology, Lew Wallace's horticultural interests, and changing landscape trends of the early 20th century. Beyond that, it will be a stunning addition to the property.

The other exciting restorations that will happen in 2018 will be inside! We are restoring nine of the oil paintings in the collection. Work on seven of the paintings, including two painted by Wallace himself, is being funded by the Montgomery County Community Foundation. Restoration of the two largest paintings in the collection are being funded by a Heritage Support Grant provided by the Indiana Historical Society and made possible by the Lilly Endowment Inc. These two paintings are very well known to visitors and Wallace fans—*The Turkish Princess* and *The Conspirators*.

*The Turkish Princess* painting with its elaborate gilded frame

was a gift to Lew Wallace from Sultan Abdul Hamid II, leader of the Ottoman Empire when Wallace served as Ambassador. If you ever visited here as a child, you will remember that the eyes of the *Turkish Princess* follow you around the room! *The Conspirators* is the largest painting done by Lew Wallace that we know of. Wallace painted it after his service on the military tribunal that tried the people charged with conspiring in the assassination of Abraham Lincoln and the attempted assassinations of Vice President Andrew Johnson and Secretary of State William Seward. Both of these paintings have significant structural and cosmetic damage

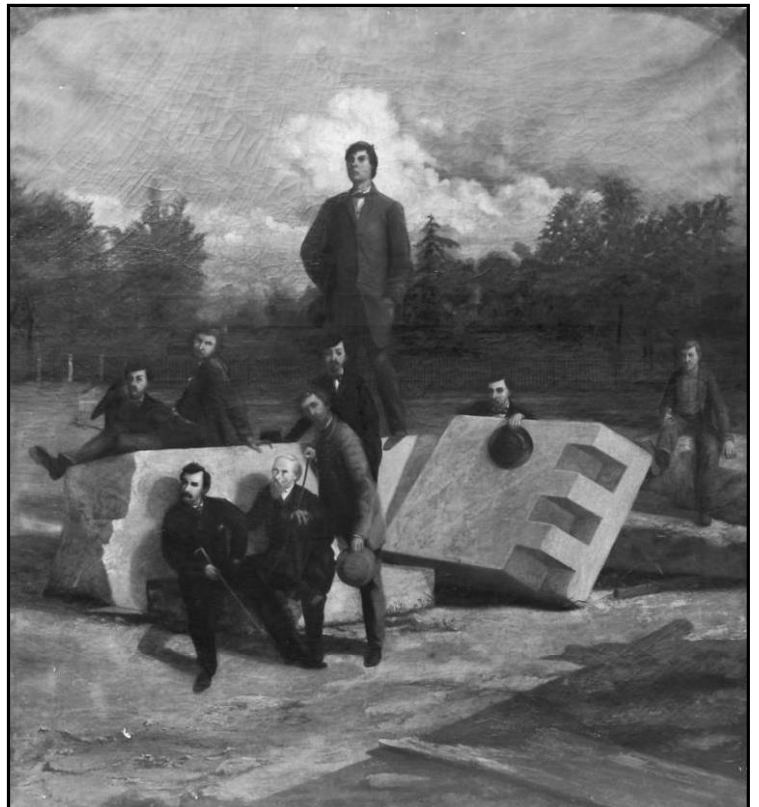
that must be addressed to preserve them for future generations.

We received \$7,000 from the Heritage Support Grant program to help cover the estimated \$8,050 cost for the restoration of both of these paintings. As part of our grant application we agreed to raise \$1,050 in new money to match the \$7,000. **We need your help!** We hope you will consider helping with the restoration of these two paintings. They were extremely important to General Wallace during his lifetime and they are extremely important to the stories we share with our visitors from around the world.

If you would like to support this project, just go to our <https://www.ben-hur.com/join-support/> page and donate using the Paypal option or send us a check with “Painting restoration” on the memo line. We sincerely appreciate any contribution that you can make toward saving this part of the Lew Wallace legacy and we look forward to sharing the results of these restoration projects—both outside and inside—later this year! I encourage you to watch our website for updates on the projects.

*Larry Goodby*

## Conservation Project



Left: Art conservator Sharon Battista examines *The Turkish Princess inside the Study*  
Right: *The Conspirators* by Lew Wallace

## Hollywood and geometry

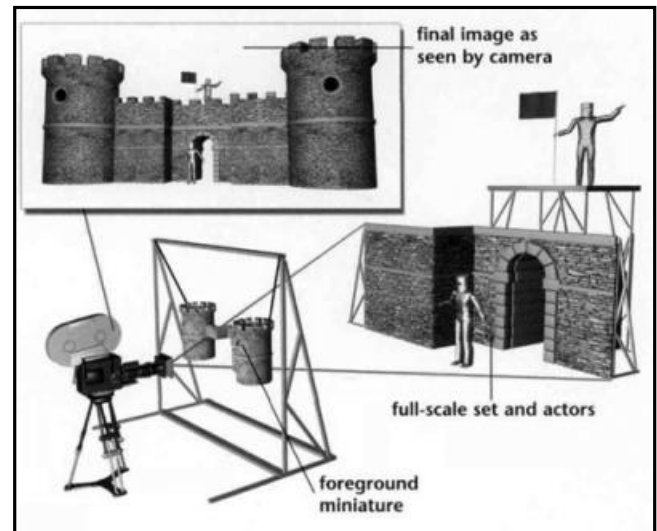
**Larry Paarlberg**  
Museum Director

In 1925, the enormous chariot race arena, Circus Maximus, needed for the filming of *Ben-Hur* was constructed at what is now the intersection of La Cienega and Venice Boulevards in Los Angeles. It was an expensive and expansive set—one of the largest ever constructed in Hollywood but it survived for only a few months. The temporary set was demolished shortly after filming of the race was completed. In an effort to further dramatize the scale of the arena, the set designers included colossal statues that dwarfed the actors. More than 10,000 people could be seated in this Circus Maximus, but for MGM and the movie director this was not enough—they wanted the largest possible audience for the climatic race. Enlarging the set and hiring additional people to fill new seats was time and cost prohibitive, so the set designers turned to geometry to solve their problem.

The designers developed additional seating by making a miniature set that was hung by wires. The miniature set was suspended close to cameras in such a way that the hanging set of tiny bleachers



looked as if it was an upper tier of seating above the actual seats filled with live people. Score one for geometry and lines of sight. To further the effect, the tiny bleachers were filled with tiny carved people. As everyone knows, tiny carved people don't move, which would have impacted the visual effect. To solve this problem, the carved people in the hanging miniature were fixed to rods that could be raised and lowered so it looked like whole rows of people were jumping to their feet as the chariots raced by. The "wave" created by the carved miniatures was timed to coincide with the thousands of live extras jumping to their feet cheering the drivers. The hanging miniatures increased the perceived audience to approximately 60,000—10,000 live extras and 50,000



miniatures. This special effect was kept secret from the public for decades.

The day after the race was shot, the Los Angeles Times ran a large headline with a photo of the chariots racing. The article declared: "History of Stupendous 'Ben Hur' Screen Production Brings New Triumph to Hollywood as Film Capital." This was a telling statement as in the article, the reporter concluded that once and for all, the only place to make a film was Southern California. The movie industry had only been shifting to California since 1911 and studios in New York and Jacksonville, Florida, where the film industry started were still making movies and were viewed as competitors. By the early 1930s all of the film studios in Florida were gone and the studios in New York had clearly lost their lead to Hollywood and Southern California. In the 1920s, both *Ben-Hur* and Hollywood placed first their races!

# Youth ArchiCamp Returns this Summer

In partnership with Indiana Landmarks, we are offering ArchiCamp on June 19-20 for children ages 8-12. The camp will run from 9:00 to 3:00 each day and costs \$25 per student.

During the two-day camp, students will learn about Crawfordsville's architectural heritage, including the historic Study building. Campers will take walking tours, learn about architectural terms, make plaster rosettes from molds, build

local buildings from cardboard boxes, learn about careers in historic preservation, and discuss



*ArchiCamp Participants in 2016 learn about the architecture at Lane Place*

preservation successes in our community.

In order to provide this experience to students for only \$25, we rely on donations from organizations, businesses, and individuals to sponsor students for \$75.

If you are interested in sponsoring a local child, or if you would like to register a student for ArchiCamp, please contact Amanda McGuire at [amcguire@ben-hur.com](mailto:amcguire@ben-hur.com).

## General Lew Wallace deserves his place in history. Help us preserve that place.

Membership to the **Lew Wallace Study Preservation Society** begins with your annual contribution of \$25 or more. Membership offers discounts and complimentary admission and event tickets.

**Lieutenant Level—\$25 (Individual)**

- Complimentary admission for 1
- Subscription to newsletter

**Major General Level—\$50 (Family)**

- Complimentary admission for family
- Subscription to newsletter

**Governor Level—\$100 (Sustainer)**

- Major General-level benefits, plus
- 10% discount in museum shop



**Ambassador Level—\$250 (Benefactor)**

- Governor-level benefits, plus
- 2 tickets to the annual Taste of Montgomery County

**Ben-Hur Level—\$500+ (Patron)**

- Ambassador Level benefits, plus
- 1 ticket to the annual Holiday Tea

Name \_\_\_\_\_

Address \_\_\_\_\_

City \_\_\_\_\_ State \_\_\_\_\_ Zip \_\_\_\_\_

Phone number \_\_\_\_\_ e-mail \_\_\_\_\_

*Please clip & mail your membership information to LWSPS, PO Box 662, Crawfordsville, IN 47933*

Enclosed is my check payable to the Lew Wallace Study Preservation Society

I will pay with credit card online

Please visit [www.ben-hur.com/join-support](http://www.ben-hur.com/join-support) to pay for your membership with a credit card via Paypal

I wish to remain anonymous

I'm declining benefits, making my contribution deductible to the full extent of IRS regulations.

## 2018 Programs

At the General Lew Wallace Study & Museum we offer programming that is directly related to our annual theme as well as programs that have a particular relevance to our community. In addition to our Hoosier Authors Book Club offerings, in 2018, we have already scheduled a number of lectures and programs that will bring guest speakers to Crawfordsville from far and wide.

**April 26**, we will be hosting Dr. Howard Miller, professor emeritus of History and Religious Studies from the University of Texas, Austin. Dr. Miller's talk is entitled "The 1925 *Ben-Hur*: Epic End to an Era." Dr. Miller will discuss the ways that the silent movie released in 1925 impacted our understanding of *Ben-Hur* and the film industry.

**May 24**, we will host Susan Sutton from the Indiana Historical Society for a talk entitled "Indianapolis and World War I." This year is the

centennial of the end of World War I. The war to end all wars impacted the world, the United States, and Indiana. Lew and Susan Wallace's two grandsons fought in the war and one was killed in battle. This talk will look at the ways the war impacted the home front in Indianapolis.

After hosting the TASTE! of Montgomery County on **August 25**, we resume our lectures and other programs in September.

**September 13**, in partnership with the Schools of Art, History, Religion, and Classics at Wabash College, we will be showing the epic 1925 silent movie on campus. If you get a chance to hear Dr. Miller in April, you will want to see all the excitement surrounding this movie.

**September 20**, we will be hosting Dr. Thomas Slater from Indiana University of Pennsylvania. Dr. Slater is an expert on silent movies and

he will be discussing June Mathis. Ms. Mathis was given the task of bringing the epic silent movie version of *Ben-Hur* to the screen. She was one of the most powerful women in Hollywood in the 1910s and early 20s when women did have influence. Ms. Mathis was fired from the *Ben-Hur* project as it was reimaged by MGM, which effectively ended the role of women as power-players in Hollywood for decades.

We have other programs yet to be put on the calendar, including a return visit by Dr. Miller to discuss the 1959 Charlton Heston version of *Ben-Hur*, a program on the Lincoln Conspirators to celebrate the return of original painting of *The Conspirators* painted by Lew Wallace to the Study after full conservation, and the dedication of the restored Wallace Reflecting Pool. Please check our website and watch the local papers for more information on our programs for 2018!!

---

## Unique Ways to Support the Study

Did you know there are easy ways to support the Study while you shop? If you buy your groceries at Kroger, you can register your Kroger Plus Card in the Kroger Community Rewards program at <http://krogercommunityrewards.com/> and search for us as "Lew Wallace Study Preservation Society" or by our organization number, "29089."

Every time you use your Kroger Plus Card, we'll get a portion of your total donated to our organization!

You can also support us while shopping online at Amazon. If you visit our online gift shop page at <http://www.ben-hur.com/shopping/> and click any of the links to an Amazon product, you

will be taken to Amazon through our Amazon Affiliates link. We will get a portion of anything you buy during that visit, at no extra cost to you!

For other ways to support the General Lew Wallace Study & Museum, visit our Join and Support page at <http://www.ben-hur.com/join-support/>.

## Wallace Book Project

Stephanie Cain  
Visitor Services

For three years, Museum staff has been working hard at editing and formatting Lew and Susan Wallace's books, and the end of the project is finally in sight! Because Lew's books are currently more widely available than Susan's, the project began with Susan's books, and has since moved on to Lew's books.

Susan's books include *The Storied Sea*, *Land of the Pueblos*, *Ginevra*, *The Repose in Egypt: A Medley*, and *Along the Bosphorus and Other Sketches*. Most of Susan's books are a combination of travelogue and cultural commentary of the various places she traveled with Lew. *The Storied Sea* and

*Along the Bosphorus* both deal with her travels to and around the Ottoman Empire. *Land of the Pueblos* is about her time in New Mexico while Lew was the territorial governor.

Three of Lew's books are now available, including the Study's Bicentennial Edition of *Ben-Hur*, his first novel *The Fair God*, and his campaign biography of Benjamin Harrison. A two-volume version of *The Prince of India* is currently being formatted.

Lew's autobiography will be published in a special, two-volume paperback set. It has been formatted and proofed and is currently being indexed. It should be available by May.

Books yet to be released include Susan's *The City of the King*, Lew's *The Wooing of Malkatoon* and *Commodus*, and their collected poetry. All short works, these may be combined in a single volume for publication.

All books are available as a paperback or e-book through Amazon and as a paperback in the Study's gift shop. Books may be purchased online through our gift shop website <http://www.ben-hur.com/shopping/>. Other e-books are also available at that link, including *How I Came to Write Ben-Hur* (an excerpt of the autobiography) by Lew Wallace, and e-books of several past exhibits.

## Hoosier Authors Book Club

Returning this April, the Hoosier Authors Book Club enters its third year at the General Lew Wallace Study & Museum. Begun as a part of the 2016 bicentennial programming celebrating the Golden Age of Indiana Literature, the book club has been consistently popular.

This year the book club is expanding to reading current Hoosier authors with Noblesville-based Susan Crandall, who was a guest at the Hoosier Author Fair in November, and Bloomington native Michael Koryta.

Books read in 2018 will include

historical novels, mysteries, memoirs, and general fiction. Jessamyn West's *The Massacre at Fall Creek* is based on actual events that took place in 1824. Nine Native Americans were murdered by seven white men. Six were captured, four were prosecuted for the act, and two testified for the prosecution. This was the first time white men were tried for crimes against native citizens. Edwin Way Teale's *Dune Boy* is a naturalist's memoir of growing up in northern Indiana.

The 2018 schedule of meetings is as follows:

**April 19, 2018** – *The Massacre at Fall Creek* by

Jessamyn West

**May 17, 2018** – *The Flying Circus* by Susan Crandall

**June 14, 2018** – *So Cold the River* by Michael Koryta

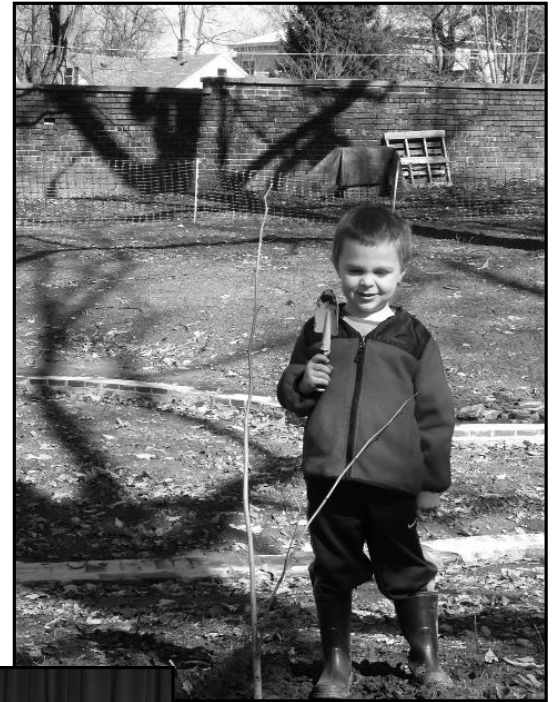
**October 18, 2018** – *Dune Boy* by Edwin Way Teale

**November 15, 2018** – *An American Tragedy* by Theodore Dreiser

Copies of each book will be available for checkout from the museum, courtesy of the Indiana Humanities Novel Conversations program. Meetings are held at 7 p.m. in the Carriage House. All discussions are free and open to the public, with reservations required.



# Study Scrapbook



*Clockwise from top left: Tea-goers enjoy delicious treats at the Holiday Tea; Conor McGuire helps Deb King replant a basswood tree near the restored reflecting pool; snow covered the grounds in late March; the tulip tree after it was cut down; cutting down the oak tree along the south wall; John Herbst (left), president and CEO of the Indiana Historical Society, presents Larry Paarlberg with a Heritage Support Grant*

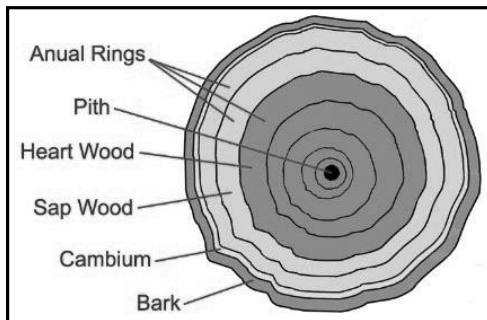




# From the Gardens

**Deb King**  
**Grounds Manager**

The long cold winter is losing its grip on the Study and spring is creeping (slowly) towards Indiana. This winter two of the largest trees were cut down. For the past few years, a red oak and tulip poplar have been dying. Numerous limbs have fallen throughout the years and safety had become a factor in the decision to have the trees removed. The oak and the tulip age estimates are between 120-130 years old. The stump of the tulip tree was level-cut in anticipation that it could be used as an educational tool. Studying the layers of the tree and counting the tree rings could be an activity for the youth camp.



Two nine-foot sections of the tulip trunk were taken to a local lumber mill and will be used by the historical society.

The Reflecting Pool project is a work-in-progress. The landscape plans have been finalized and plants have been ordered. The soil

removed last summer during the restoration was returned to the interior of the pool and it will be amended with organic material. Approximately 1000 square feet of the interior will be planted with liriopae.

A mass planting of Big Blue liriopae will fill the interior of the pool. In historic photos of the Study grounds, the lawn appears edged with taller grass-like plants. Liriopae, with its arching grass-like foliage, has a flower spike

that appears in August-September. Large purple flowers, similar to salvia, adorn the spike. After flowering, the spikes are filled with dark purple seeds.

Liriopae is a low-maintenance perennial— although the foliage may need trimming in the early spring—making it perfect for mass planting.

The ground surrounding of the pool area has been graded and grass seed will be planted to provide a lawn area. Walkways will complete the landscaping.



Gravel pathways will be laid connecting the moat gardens with the reflecting pool. An interpretive sign will provide visitors with information on the pool.

Historic photos show rows of cannas planted along the pathway to the reflecting pool. We would like to get a canna garden started in the future. Anyone who has extra canna bulbs and wishes to donate them to the Study is welcome to drop them off at the Carriage House.

**Park Day**  
**April 28**  
**9:00 a.m. - 12:00 p.m**

## Adopt-A-Spot

The Adopt-A-Spot program has long been a great aspect of the Museum. The program was developed as a means to provide funds where no funds existed. The tree signs, plant labels, interpretive signs, perennials, and trees purchased with these funds provide our visitors with an experience they never forget.

The continuing maintenance of the mature trees and planting of replacements is funded by the Adopt-A-Spot program.

Adopt-A-Spot sponsors in 2018 (as of March 31) are Chuck & Nancy Beemer, Mike & Diane Beemer, Jan & Roger Cain, Barb & Steve Carver, Elaine &

Rick Chase, Flower Lovers Club, Helen & Marc Hudson, Suanne & Tom Milligan, and Morris & Mary Ann Mills.

The grounds are a vital part of the Museum experience. If you would like information about the Adopt-A-Spot program contact Deb King.

## General Lew Wallace Study & Museum Contributions

### Received October 28, 2017 through March 15, 2018

*Every member and donor matters a great deal to us and we appreciate your support. We have made every attempt to ensure the accuracy of this list. If we have made an error in your listing, please contact us immediately.*

#### Membership

##### Ben-Hur

Michael & Diane Beemer  
James & Lorena Elmore  
Dale & Linda Petrie  
Tom & Suanne Milligan  
Michael & Gail Stephens  
Richard & Nancy Williams

##### Ambassador

Roger Adams  
Rick & Elaine Chase  
Les & Pat Hearson  
Rex & Sandy Henthorn  
Blair Miller/Gregory Leddy  
Greg & Nancy Morrison  
Donald Rerick  
James & Debra Rodebaugh  
John & Kathy Steele

##### Governor

Jonathan & Carolyn Baer  
Brent & Jessica Bokhart  
Steve & Barb Carver  
Bill Doemel (in Memory of Nancy)  
Scott & Jamie Douglas  
Monica Grant  
Sam & Susie Hildebrand  
David Korsh  
Fred & Sally Kreimer  
Jamey & Diane Norton  
Scott & Sharon Parker  
Sue Rickett  
Nicholas Ritzmann  
Robert & Nancy Rogers  
Michael & Joann Spragg  
Larry & Nancy Van Arendonk  
Dick & Betty Walker  
Mary Weeks/Pete Palfrey

##### Major General

Richard T. Buck  
Rusty & Kathy Carter  
James Collier  
Fred Gaske  
Monty & Sherry Harris  
Larry Hathaway

Aaron & Natalie Hurt  
Bob & Kathy Keck  
Diane Kreisher  
Mary Kummings  
William Kummings  
Keith & Marian Lindow  
Dorothy Lunning  
Bernie & Chris Manker  
Tom Mason/Christine Guyonneau  
Barbara Ann Reisner  
Barrett & Janet Robinson  
Elton & Marge Ross  
Tom & Betty Sheets  
Jerry & Cindy Smith  
Aaron & Ashley Spolarich  
John & Sandy Tidd  
John & Clara Wooten  
John & Margaret Zimmerman

##### Lieutenant

Rosalia Acklin  
Nancy Bowes  
Douglas Clanin  
James Glass  
Robert & Susan Miller  
Dale Milligan  
Carol Peterson  
Marty Pool  
Susan Rosen  
Bob & Linda Sabol  
Chuck & Eatha Sommer  
Nancy Stone  
Joann Troxel  
Peter & Bronna Utterback  
Charlie & Leslie Warren  
Jean Williams

##### Annual Fund

Chuck & Nancy Beemer  
Michael & Diane Beemer  
Richard & Eileen Bowen  
Roger & Jan Cain

Jim Cantrell  
Steve & Barb Carver  
Rick & Elaine Chase  
Jacob Corbin  
Ron & Trudy Dickerson  
Philip Drake  
James & Lorena Elmore  
Ed & Sue Fain  
Diane Green  
Johanna Herring  
Greg & Lora Hess  
Dennis J. & Dee Hohlbein  
Marc & Helen Hudson  
Bob & Kathy Keck  
Diane Kreisher  
Alvin Lee/Esther Thornton  
Blair Miller/Gregory Leddy  
Irmingard McKinney  
Judy Michal  
Dale Milligan  
Tom & Suanne Milligan  
Morris & Mary Ann Mills  
Scott Molin/Sally Evans  
Greg & Nancy Morrison  
Robin & Gail Pebworth  
Harry & Suzie Siamas  
Jerry & Molly Spillane  
Michael & Gail Stephens  
Peter & Bronna Utterback  
Larry & Nancy Van Arendonk  
Patrick & Chris White  
Flower Lovers Club

##### Adopt-A-Spot

Chuck & Nancy Beemer  
Mike & Diane Beemer  
Roger & Jan Cain  
Steve & Barb Carver  
Rick & Elaine Chase  
Marc & Helen Hudson  
Tom & Suanne Milligan  
Morris & Mary Ann Mills  
Flower Lovers Club

### Stay Connected Online:



wallacestudy



@wallacestudy

# Reflecting Pool Project



1



2



3



4



5



6

1. Historic photo of Lew Wallace with his grandsons at the reflecting pool; 2. The top of the pool wall exposed during archaeological work in 2011; 3. The reflecting pool during excavation in 2017; 4. The central island is exposed in 2017; 5. Capstones are fitted in place by Dowell Masonry; 6. The reflecting pool after all capstones are in place



**GENERAL LEW WALLACE STUDY & MUSEUM**

200 Wallace Avenue / PO Box 662

Crawfordsville, Indiana 47933

Phone: 765-362-5769

Email: [study@ben-hur.com](mailto:study@ben-hur.com)

[www.ben-hur.com](http://www.ben-hur.com)

PRSRT STD Nonprofit US Postage Paid Crawfordsville IN Permit No. 8
--

**RETURN SERVICE REQUESTED**

---

## 2018 Spring & Summer Events Calendar

April 19 - The **Hoosier Authors Book Club** will meet to discuss Jessamyn West's *Massacre at Fall Creek* at 7 p.m. in the Carriage House Interpretive Center. Free. RSVP required.

April 26 - **Adult Lecture Series**. The 1925 *Ben-Hur: Epic End to an Era* presented by Dr. Howard Miller. 7 p.m. in the Carriage House Interpretive Center. Free. RSVP required.

April 28 - Join us for **Civil War Trust Park Day** from 9 a.m. - 12 p.m. and help prepare the newly restored reflecting pool.

May 17 - The **Hoosier Authors Book Club** continues with a discussion of *The Flying Circus* by Susan Crandall at 7 p.m. in the Carriage House Interpretive Center. Free. RSVP required.

May 24 - **Adult Lecture Series** - Susan Sutton will present on Indianapolis during World War I. 7 p.m. in the Carriage House Interpretive Center. Free. RSVP required.

June 14 - The **Hoosier Authors Book Club** continues with a discussion of *So Cold the River* by Michael Koryta at 7 p.m. in the Carriage House Interpretive Center. Free. RSVP required.

June 26-27 - **ArchiCamp** (see page 5 for details).

August 25 - The 12th annual **TASTE of Montgomery County** will take place on museum grounds and feature scrumptious food from local restaurants and live music. Mark your calendars to join us!