



FROM THE STUDY



Join us for the 11th Annual TASTE! of Montgomery County

Stephanie Cain

Visitor Services

The eleventh annual TASTE of Montgomery County returns to the Study grounds on Saturday, August 26 from 12:00 - 10:00 p.m.! Museum staff, the TASTE Committee, and other dedicated volunteers are hard at work preparing for our most successful fundraising event.

The TASTE will feature four bands this year. Flannel Jane will open our musical celebration from 1 - 3 p.m. Flannel Jane offers a high-energy performance of the best rock songs from the 90s. Members are Jake Resler, Travis Feaster, Max Jeffrey III, Austin Shearer, and Chris Taylor. Covering songs by 90s greats such as Pearl Jam, Fastball, Green Day, Nirvana, Stone Temple Pilots, Bush, and more, Flannel Jane is sure to provide a great 90s nostalgia experience.

Popular blues performers the Jason Wells Band will be performing from 4:30 - 6:30 p.m. Jason Wells Band is a blues rock touring band. They have shared the

tours throughout the Midwest.

Our headlining act is making a big comeback this summer - in more way than one! After taking a short break from the stage, Steve

Inside This Issue

Notes from the Director	2
Main Street Mile	5
Fall Programming	6
From the Gardens	7
History Tidbit	8
ArchiCamp	9
Donor Recognition	10
Study Scrapbook	11
Events Calendar	12



The crowd enjoyed great music and amazing food at the tenth annual TASTE of Montgomery County in 2016

stage with Candlebox, Jackyl, Kentucky Headhunters, and Jimmy Van Zant. Band members are Jason Wells, Larry Pfohl, and Evan Grubbs. Hailing from Frankfort, Indiana, Jason Wells

Trent & Smalltown were preparing to recharge their musical career this summer. But just as the summer was getting started, Steve was involved in a serious car accident. Fortunately, he is on

cont. on page 3

The General Lew Wallace Study & Museum is deeply committed to the protection and preservation of Lew Wallace's legacy now and for generations to come.

Mission

Board of Trustees

*President
Elaine Chase*

*Vice President
Eileen Bowen*

*Treasurer
Dale Petrie*

*Secretary
Anne Shaw*

*Ex Officio
Fawn Johnson*

Jessica Bokhart

Phil Boots

Rusty Carter

Erin Gobel

Brian Keim

Jamey Norton

Gail Stephens

Gerry Turner

Museum Staff

*Director
Larry Paarlberg
lpaarlberg@ben-hur.com*

*Associate Director
Amanda McGuire
amcguire@ben-hur.com*

*Visitor Services
Stephanie Cain
scain@ben-hur.com*

*Grounds Manager
Deb King
dking@ben-hur.com*

765-362-5769

Notes From The Director



Lew Wallace built his Study over 120 years ago and to look at it, you might think that time has stood

still. While our goal is to protect and preserve the Study and its grounds and the heritage that Lew Wallace left us, I can assure you that time has not stood still! In both capital improvement projects and programming the Study and Museum is a busy place. Over the last few years we have worked to restore key features of the building, not only assuring an accurate presentation of the Study but also helping preserve the property as long as is physically possible. We have also sought to open the property and engage the community in as many ways as possible.

Beyond the attention being given to the buildings and collections, the grounds are also seeing changes. Over the last few years we have installed new and much more convenient handicapped parking; seen a wonderful and much needed restoration to the brick wall we share with the old Wallace home site thanks to former owners; improved drainage in front of the Study; brought a

large, historic limestone bust of Governor David Wallace (Lew's father) up from a ravine to the flagpole garden adjacent to the Carriage House so that it can be better appreciated; installed a donor appreciation plaza recognizing people who contributed to the interior restoration; and added significant garden features. Dogwood trees have been planted honoring a special couple, the flower beds have been enhanced, and a recreation of Lew's moat garden was installed to better reflect the appearance of the east side of the Study after Lew filled in the moat. One of our most recent additions has been a Little Free Library built by a volunteer to resemble the Study. It is a creative way to encourage visits and speaks to Lew's literary interest.

In July, we initiated our most extensive grounds restoration event to date. For several years we partnered with the School of Anthropology at the University of Indianapolis for their field schools for students. They investigated the grounds in general and Lew Wallace's reflecting pool in particular. With the generous support of a donor, we have initiated the full excavation of the pool as the first step to restoration of this feature. We had no idea what remained in the ravine behind the Study where the pool was located. Happily, the excavation revealed that, except

for damage done in the 1990s when a water line was installed, the brick walls survived largely intact. The island that held an elaborate cast-iron urn was badly damaged, but enough survived that we now know its exact dimension. As we move forward we will recreate the original limestone cap stones that outlined the perimeter of the reflecting pool, regrade the surrounding area, reinstall the island and urn, plant the pool in a uniform ground cover the give the effect of water, and finally place a bench on the north side of the pool just where Lew had it.

This restoration effort will provide an extraordinary

enhancement to the presentation of the grounds. It will also allow us to talk about the property in a new way. Lew built the Study and the reflecting pool at the end of the Victorian age and the beginning of the Country Place era that flourished until World War I. This pool, his surrounding plantings, and the grove of trees he nurtured all speak to this important moment in time when one age was ending and a new—albeit short-lived—era was dawning. While Lew Wallace was product of his time, he was in many ways also a man ahead of his time. The restoration of the pool will help us share this aspect of the man and provide

new opportunities to expand our public programming. If you have not been to the Study in the last couple of years—I urge you to come and visit us again. Thanks to the support of many people, I can assure you time has not stood still here!

Larry Foulkes



Taste!, continued

the mend, and while their comeback may have been delayed a little, that will make it that much better. The TASTE of Montgomery County will see Steve Trent's triumphant return to the stage!

Because music on the lawn was so popular last year, we will have local favorite Nuthatch playing on the lawn between stage sets, from 3 - 4 p.m. and 6:30 - 7:30 p.m. Fronted by Jim Swift, Nuthatch has played at the TASTE in 2012 and 2015. Their Irish jigs and reels and American folk songs will set toes tapping on the way to the food tents.



Local restaurants, caterers and food vendors will serve up their most delicious delicacies on Museum grounds. Joining

the TASTE lineup for the first time are Veedersburg caterer and bakery Shady

Rail Farm and the Giggin Pig. Returning favorites include China Inn, Coal Creek Cellars, Indiana State Fair Grand Champion Brewery Daredevil Brewery, and the Juniper Spoon. A menu will be available to be downloaded from the website before the TASTE.

Advance tickets are now

*Above: Steve Trent & Smalltown
Right: Jason Wells Band*



cont. on page 4

TASTE!, continued

locations. Visitors can purchase TASTE tickets at the Carriage House Interpretive Center at the General Lew Wallace Study & Museum; the Montgomery County Visitors and Convention Bureau at the corner of Pike and Water streets; Milligan's Flowers & Gifts at 115 E. Main Street; and Crawfordsville Parks & Recreation at 922 E. South Blvd. Advance tickets are \$5 for adults and \$2 for students, and advance ticket holders can bypass the line at the entry gate for quicker admission to the fun. Tickets at the gate will be \$7 for adults and \$3 for students.

Interested in attending the TASTE for free? The museum is recruiting volunteers to assist before, during, and after the event. Volunteers get free admission to the event and a TASTE t-shirt or 3 food tickets. To volunteer, please visit <http://www.tasteofmontgomerycounty.com/volunteers/> and click

the "Sign Up Genius" button. We also invite you to help us spread the word by joining our Street Team. Visit the Street Team page on our website for images that can be shared on Twitter, Facebook,



Nuthatch performs at the 2015 Taste

Pinterest, and other social networks, as well as a printable flyer you can send to your friends!

A special thanks to the Title Sponsors of this year's TASTE, who donated \$1000 or more: Montgomery County Tourism Commission, RE/MAX Real Estate Associates Crawfordsville, Dr. Howard Miller, Franciscan Health Crawfordsville/ Franciscan Physicians Network, and *The Paper of Montgomery County*.

The staff and board would like to thank the TASTE Committee in advance for their hard work and dedication to this event: Stephanie Cain, Erin Gobel, Joey Gerold, Brian Keim, Deb King, Amanda McGuire, Larry Paarlberg, and Dale Petrie. A special thanks to this year's committee chair, Jessica Bokhart.

The TASTE is the biggest annual fundraiser for the General Lew Wallace Study & Museum. All proceeds from gate sales directly benefit the Museum's collection and programming. Bring your friends and family to the county's biggest picnic to help support the organization that keeps General Lew Wallace's legacy alive for future generations. For more information about this year's TASTE, visit TasteOfMontgomeryCounty.com. You can also keep up with announcements and news by following the TASTE on Facebook: www.facebook.com/TasteOfMontgomeryCounty and on Twitter: www.twitter.com/TasteMC.



**Montgomery County
Tourism Commission**

TASTE Race - Main Street Mile

As an added feature of the TASTE this year, we are encouraging everyone to run that extra mile! The Main Street Mile will be run on Saturday morning, August 26, beginning at 9:00 a.m. It will start and finish at the parking lot in the 500 block of East Main Street near the Post Office. The course will take runners east on Main Street toward Oak Street and back.

Registration for the Main Street Mile is being handled

by Active.com. The registration fee is \$20.00 if you register by August 14. After August 14, the fee will increase to \$25.00.

Cash prizes will be awarded to the top three male and top three female finishers.

Runners will receive free entry to the TASTE so after you complete your four minute mile please plan on joining us at the TASTE from Noon until 10:00 p.m.

For more information or to find a link to register online, visit the Taste Race website at <http://www.tasteofmontgomerycounty.com/main-street-mile/>.



General Lew Wallace deserves his place in history. Help us preserve that place.

Membership to the **Lew Wallace Study Preservation Society** begins with your annual contribution of \$25 or more. Membership offers discounts and complimentary admission and event tickets.

Lieutenant Level—\$25 (Individual)

- Complimentary admission for 1
- Subscription to newsletter

Major General Level—\$50 (Family)

- Complimentary admission for family
- Subscription to newsletter

Governor Level—\$100 (Sustainer)

- Major General-level benefits, plus
- 10% discount in museum shop



Ambassador Level—\$250 (Benefactor)

- Governor-level benefits, plus
- 2 tickets to the annual Taste of Montgomery County

Ben-Hur Level—\$500+ (Patron)

- Ambassador Level benefits, plus
- 1 ticket to the annual Holiday Tea

Name _____

Address _____

City _____ State _____ Zip _____

Phone number _____ e-mail _____

Please clip & mail your membership information to LWSPS, PO Box 662, Crawfordsville, IN 47933

Enclosed is my check payable to the Lew Wallace Study Preservation Society

I will pay with credit card online

Please visit www.ben-hur.com/join-support to pay for your membership with a credit card via Paypal

I wish to remain anonymous

I'm declining benefits, making my contribution deductible to the full extent of IRS regulations.

Fall Programming at the Study

Amanda McGuire
Associate Director

We have a lot lined up for this autumn!

August 10, 6:30 pm - Hoosier Movie Night - Join us as we watch *Friendly Persuasion*, the 1956 adaptation of Jessamyn West's book, starring Gary Cooper and Dorothy McGuire.

September 21, 7 pm - Hoosier Authors Book Club - We will read and discuss *The Bears of Blue River*, a story about a young boy growing up in rural nineteenth-century Indiana, by Charles Major.

September 23, 10 am - 5 pm - Every year the Museum participates in the Smithsonian Magazine's annual Museum Day Live! In partnership with Smithsonian Magazine, we offer free admission to visitors who give us a printed coupon or show a coupon from the magazine's website on their smartphone. Visit <http://www.smithsonianmag.com/museumday/museum-day-live-2017/> for more information and to view a list of other participating museums. Tours of the Study take approximately one hour and the last tour will begin at 4 p.m.

October 12, 7 pm - Adult Lecture Series - Max Goller, Director of Education at the Kurt Vonnegut Memorial Library, will present a lecture on Kurt Vonnegut, one of the most famous and influential Hoosier authors.

October 19, 7 pm - Hoosier Movie Night - Join us for our third and final movie night as we watch *The Magnificent Ambersons*, the 1942 film directed by Orson Welles. This film adaptation of Booth Tarkington's Pulitzer Prize-winning novel earned four Academy Award nominations and is considered one of Welles' best works.

October 26, 7 pm - Adult Lecture Series - Dr. Howard Miller will once again join us all the way from Austin, Texas, to discuss *Ben-Hur*. He is tentatively planning to talk about *Ben-Hur* and the movies. This will be a great lead-in to our 2018 exhibit about the movie adaptations of Lew Wallace's famous novel.

November 2, 7 pm - Hoosier Authors Book Club - As we close out our second year of the Hoosier Author Book Club, we will tackle Lew Wallace's best-

selling book, *Ben-Hur*. There is also the option to read Carol Wallace's updated version of *Ben-Hur*, published in 2016, if you have already read the original masterpiece.

November 25 - Hoosier Author Fair - We are celebrating Small Business Saturday by inviting Hoosier authors to spend an afternoon in the Carriage House, meeting readers and signing books. Join Study employee Stephanie A. Cain, Society member Laura VanArendonk Baugh, Wabash College professor Ethan Hollander, RITA-Award-winning author Susan Crandall, Underground Railroad scholar Shannon Hudson, and others for an afternoon of books!

December 1, 3 - 6 pm - Holiday Tea & Fashion Show - Join us as we celebrate A Stellar Christmas at this year's Holiday Tea, an annual fundraiser for the Study. It will be hosted at Lane Place and the Elston Homestead, and will feature delicious sweet and savory treats, along with a fashion show, music by the ever-popular T-Tones, and a lovely afternoon of socializing to kick off the holiday season.

Stay Connected Online:



wallacestudy



@wallacestudy



wallacestudy

From the Gardens:

Deb King

Grounds Manager

Mother Nature is kind . . . and devastating too. A warm and rainy spring has the grounds and gardens looking wonderful. The gardens have been blooming since March. The spring daffodils and tulips and the early summer allium and iris have given way to summer's colorful marigolds, zinnias, and geraniums. This year over five yards of mulch was spread over the gardens and around newly planted trees.

On one of the busiest weeks of the year, student field trips every day, a large red oak tree fell. I have been watching the tree and the degree of lean for the past 2 years, knowing it was just a matter of time before it would fall. Thankfully, the tree fell during the evening hours. The base of the trunk was rotting and the tree was hollow approximately 6 feet high! Thank you to Jon Baugh and Mike Abney for the cleanup. Look for some of the tree in beautifully turned wood by local artist Mike Abney.

The Flower Lovers Club had their flower walk and plant sale on the grounds at the end of June. The Museum gardens were featured and over three tables of plants, dug and potted by

the members, were available for purchase. Over 85 flower lovers toured the gardens. The Flower Lovers Club graciously left their unsold potted plants to the Study and we have them available for sale alongside the Study's plants. A small donation will provide a wonderful addition to your garden.

The reflecting pool project is occurring on the grounds this summer. Excavation of the pool has the soil filled with bricks, rocks, and tree roots piled high on the surrounding ground. At one end of the pool, an island was featured with a

large oval cast-iron urn. The urn was filled and planted with a variety of plants and flowers. The Museum is scouring the internet and antique shops and talking to historic contacts in search of a reproduction of the urn. The soil will be returned to the pool, leaving a portion of the wall and capstones visible, and the interior will be planted with groundcover.



Above: The original urn from the central island of the reflecting pool. It is missing one handle and is now stored in the basement of the Study.



Left: Lew Wallace and his two grandsons sit by the reflecting pool.

For more information on the reflecting pool project see Notes from the Director on page 3 and the Study Scrapbook on page 11.

Happy 200th Birthday Zerelda Sanders Wallace!

In celebration of Zerelda Wallace's 200th birthday on August 6, here is a brief biography of Lew Wallace's beloved step-mother.

Born: August 6, 1817

Died: March 19, 1901

Career: Mother and public advocate

Notable achievements:

First Lady of Indiana, speaker for the WCTU and Equal Suffrage Society, and the inspiration for Judah Ben-Hur's mother

Zerelda Wallace (1817-1901) was the second wife of David Wallace and the stepmother of Lew Wallace. She was born on August 6, 1817, in Kentucky to a doctor. Zerelda traveled with her father across the country as he treated patients. She taught herself how to read and attended boarding school at age eleven. Her family moved to Indianapolis in 1830. She met David Wallace in Indianapolis and married him on December 26, 1836, at age nineteen. She immediately became the stepmother to three boys aged 5 to 13, including Lew. She and David had six more children, three of whom died during infancy. During David's term as governor of Indiana, Zerelda was known as an elegant hostess and First Lady. Lew said that she would tell David her opinions on policies and political statements during the evenings.



After David died in 1859, Zerelda took in boarders to help pay her expenses. In 1874, Zerelda took in four grandchildren who were orphaned by their parents' deaths. That same year, she became famous for public advocacy, serving as a speaker for the Indiana Women's

Christian Temperance Union and the Equal Suffrage Society of Indianapolis. Zerelda worked for suffrage on the national level with Susan B. Anthony and Elizabeth Cady Stanton. Her public work ended after a collapse at the podium in 1892, but her beliefs on both temperance and suffrage remained fervent. She also

remained friends with her fellow activists, and wrote to Miss Anthony in 1894 that "...when men recognize that their interests demand that women shall have the ballot, it will be conferred upon us. That time is speedily coming."

Zerelda died on March 20, 1901, in Spencer, Indiana, and was buried next to her husband David Wallace in Crown Hill Cemetery in Indianapolis.

Zerelda was the inspiration for Judah Ben-Hur's mother in Lew Wallace's masterwork, *Ben-Hur: A Tale of the Christ*. When he asked Zerelda for her opinion of the book, she replied, "O, my son, it is a nonesuch of a story, but how did you ever invent that magnificent character, the Mother?" Answering with a kiss, "Why, you dear, simple heart, how could you fail to know that the original of that picture is your own blessed self."

In his autobiography, Lew Wallace said this about Zerelda: "This is the proper place for me to add that the world has been as unable to resist her as I was. In all the states of the Union, in every village and city, there are good people who know and speak of her as Mother Wallace, the sweet-tongued apostle of temperance and reform."

ArchiCamp a Success!

Amanda McGuire
Associate Director

The General Lew Wallace Study & Museum would like to thank everyone who made ArchiCamp a success this year. The fourteen elementary and middle-school aged children who attended had a wonderful time making new friends and experiencing learning in a new way.

On Tuesday, students went on a walking tour of Elston Grove, learned about different styles of houses, and received a behind-the-scenes tour of the Study building. In the afternoon, the students designed and made plaster blocks and built and painted bird houses.

On Wednesday, students built towers using only index cards to learn about structure. We ended up with some pretty tall towers! Campers also toured the Masonic Temple and saw examples of adaptive reuse throughout downtown

Crawfordsville. They spent the afternoon creating stained glass “windows” using mosaic tiles.

A special thank you to Judi Kleine for leading the kids on an architectural scavenger hunt at the Masonic Temple!

On Thursday, students designed and built their own study buildings using recycled materials. We also went on a walking tour of downtown Crawfordsville and visited the Carnegie Museum of Montgomery County to learn about the large mural in their entryway. In the afternoon, the students learned about bridges and designed and built their own bridges out of craft sticks. We then tested the bridges to see how much weight they could hold.

We would like to thank our sponsors for making this camp possible: American Legion Byron Cox Post 72, Delta Theta



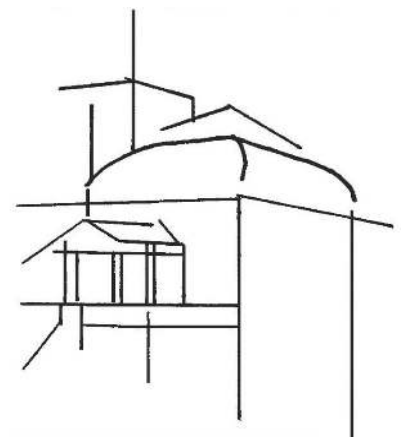
Judi Kleine shows students the theater in the Masonic Temple

Tau – Epsilon Omega Chapter, Crawfordsville Tri Kappa – Delta Omicron Chapter, INFBPW/Crawfordsville, Montgomery County Retired Teachers Association, Psi Iota Xi – Gamma Xi Chapter, Fraternal Order of Eagles Aerie 1005, Loyal Order of Moose Lodge 6, Montgomery County Extension Homemakers, Montgomery Lodge No. 50, F&A.M., Karen Patton, and Marie Stocks.

Also, a huge thank you to Jan Cain for her help throughout the camp!



ArchiCampers learn about the Elston Homestead during a walking tour of Elston Grove



General Lew Wallace Study & Museum Contributions Received March 15, 2017 through July 20, 2017

Every member and donor matters a great deal to us and we appreciate your support. We have made every attempt to ensure the accuracy of this list. If we have made an error in your listing, please contact us immediately.

Adopt-A-Spot

Rick & Elaine Chase

Memberships

Ben-Hur

James & Lorena Elmore
Richard Williams

Ambassador

John & Jill Capper
Rex & Sandy Henthorn
Franklin & Margaret Moore
Jerry & Molly Spillane
James Turley

Governor

Roland Borke
Aus & Lucy Brooks
David & Sharon Champa
Jim & Kathy Gary
Terry Lawrence
Stephen & Susan Little
Dave & Ginny Maharry
Nicholas Ritzmann
Tom & Marie Stocks
Montgomery County Visitors &
Convention Bureau

Major General

Jim & Patience Barnes
Larry & Nancy Bennett
Aus & Lucy Brooks
John & Betty Culley
Robert & Marcheta Dixon
Earl & Ruby Elliott
Kyle & Erin Gobel
Tobey & Peggy Herzog
Bob & Kathy Keck
Jane Schultz
Jerry & Cindy Smith

Lieutenant

Linda Brady
James Glass
Ethan Hollander & Christie Byun
Robert & Susan Miller
Kenneth & Ruth Ann Newnum
Ed Pease
Marty Pool
Judith Lynn Smith
Marilyn Smith
Virginia Wilcox
Crawfordsville District Public
Library

ArchiCamp Sponsors

American Legion Byron Cox
Post 72
Delta Theta Tau Sorority - Epsilon
Omega Chapter
Fraternal Aerie #1005, Fraternal
Order of Eagles
Kappa Kappa Kappa Inc - Delta
Omicron Chapter
INFBPW/Crawfordsville
Loyal Order of Moose - Lodge 6
Montgomery County Extension
Homemakers
Montgomery County Retired
Teachers Association
Montgomery Lodge No. 50,
F&A.M.
Karen Patton
Psi Iota Xi - Gamma Xi Chapter
Marie Stocks

TASTE!

Title Sponsors

Franciscan St. Elizabeth Health -
Crawfordsville
Howard Miller
Montgomery County Tourism
Commission

The Paper of Montgomery County
RE/MAX Real Estate Associates
Crawfordsville

Contributing Sponsors

Cook Heating & Air
Crawford Industries, LLC
Hoosier Heartland State Bank
Lafayette Bank & Trust
NFP Insurance
Teachers Credit Union
Wabash College
Walden Transport & Recycle
WCDQ/WCVL/WIMC
Valero Renewables - Linden

Supporting Sponsors

Arni's of Crawfordsville
B & L Engineering
Banjo Corporation
Burkhart Funeral Home
Davis Morrison Realty
Elizabeth A. Justice, Att. at Law
Henthorn, Harris, Weliever &
Petrie
Indiana American Water Co., Inc.
Industrial Federal Credit Union
J.M. Thompson Insurance
The Juniper Spoon
LSC Communication
Market Street Wealth
Management Advisors -
Jessica L. Bokhart, CFP®
Suanne C. Milligan
Northridge Chiropractic
nPrint
Nucor Steel
Pace Dairy Foods
Mike Reidy
Team Rusty - Rusty Carter
Tri-County Bank & Trust

Congrats to Ph.D. Student

Congratulations are in order for Ph.D. student John Acker, who successfully completed and defended his dissertation, "Surrogate Scriptures: American Christian Bestsellers and the Bible, 1859-1900." Acker visited the Study to research his chapter on *Ben-Hur*. There are also two additional Ph.D. dissertations in the works that are related to Lew Wallace or his Study.



Study Scrapbook



Clockwise from top right: ArchiCampers pose for a photograph at the Masonic Temple; the center island of the reflecting pool is uncovered; a view of the reflecting pool looking west; a view of the reflecting pool looking back toward the Study; members of the Brass Era Car Club visited the Study in June

Middle: Museum volunteer Walt Grant stands with the Little Free Library he built for the Study





GENERAL LEW WALLACE STUDY & MUSEUM

200 Wallace Avenue / PO Box 662
Crawfordsville, Indiana 47933
Phone: 765-362-5769
Email: study@ben-hur.com
www.ben-hur.com

PRST STD Nonprofit US Postage Paid Crawfordsville IN Permit No. 8

RETURN SERVICE REQUESTED

2017 Summer & Fall Events Calendar

August 10 - Join us for a **Hoosier Movie Night** as we watch *Friendly Persuasion* at 6:30 p.m. in the Carriage House Interpretive Center. Free. RSVP required.

August 26 - The 11th annual **TASTE of Montgomery County** will take place on museum grounds from 12 - 10 p.m. and feature live music and scrumptious food from local restaurants. Mark your calendars to join us!

September 21 - Join the **Hoosier Authors Book Club** as they discuss Charles Major's *The Bears of Blue River* at 7 p.m. inside the Carriage House Interpretive Center. Free. RSVP required.

September 23 - Join the museum as we celebrate **Smithsonian Museum Day Live!** Enjoy free admission with a printable Smithsonian pass. See page 6 for more details.

October 12 - Max Goller from the Kurt Vonnegut Memorial Library will lead a discussion about Kurt Vonnegut as part of our **Adult Lecture Series** at 7 p.m. inside the Carriage House Interpretive Center. Free. RSVP required.

October 19 - For **Hoosier Movie Night** we will show *The Magnificent Ambersons* at 7 p.m. inside the Carriage House Interpretive Center. Free. RSVP required.

October 26 - Dr. Howard Miller will return to the Study to discuss *Ben-Hur* and the movies as part of our **Adult Lecture Series** at 7 p.m. inside the Carriage House Interpretive Center. Free. RSVP required.

November 2 - The **Hoosier Authors Book Club** will meet to discuss Lew Wallace's *Ben-Hur* at 7 p.m. inside the Carriage House Interpretive Center. Free. RSVP required.

November 25 - **Lew Wallace Hoosier Author Fair** from 1 - 4 p.m. inside the Carriage House Interpretive Center. See page 6 for more details.