



FROM THE STUDY



6th Annual Taste of Montgomery County Returns

Erin Gobel
Associate Director: Education

The 6th annual Taste of Montgomery County returns to the Study grounds on Saturday, August 25 from 12:00-10:00 p.m. The Museum staff, Taste Committee, and volunteers are preparing for one of the most successful fundraisers in our history.

Over twenty restaurants, caterers, and food vendors will serve up their most delicious delicacies on the Museum grounds. At least three new vendors and new businesses to Montgomery County will be featured this year including, the Darlington General Store, Lil Sweetums Cupcakery, and Chefski's. The General Store will feature cinnamon rolls, a variety of cookies, and granola. Lil Sweetums

will feature cupcakes and cookies. Chefski's will serve stuffed mushrooms, bruschetta, and meatballs with marinara sauce.

Additionally, several vendors from past years will return, including:



Two Guys Cooking serves up ribbon chips with cheese

Norvell's BBQ, Millers Quality Meats & Catering, The Big Dipper, The Juniper Spoon, Bon Appetit, Waynetown Bar & Grill, 1832 Brew Espresso Bar, Hawg Wild BBQ, China Inn, Iron Gate, A Country A-Fair, and Coal Creek



Saturday, August 25
12:00-10:00 p.m.
General Lew Wallace
Study & Museum
Crawfordsville, IN

Adults:
\$5 admission at gate
(\$4 in advance)

Students:
\$3 admission at gate
(\$2 in advance)

Food Tickets: \$1 each

Connect with the Taste!
www.tasteofmontgomerycounty.com

facebook.com/tasteofmontgomerycounty

Inside This Issue

Notes from the Director	2
Bohumir Kryl Project	3
Zelda H. S. Wallace	4
Study Update	6
New Staff Member	8
From The Gardens	9
Donor Recognition	10
Study Scrapbook	11
Events Calendar	12

The General Lew Wallace Study & Museum celebrates and renews belief in the power of the individual spirit to affect American history and culture.

Mission

Board of Trustees

*President
Helen Hudson*

*Vice President
Rodger Walther*

*Treasurer
Dale Petrie*

*Secretary
David Maharry*

*Ex Officio
Fawn Johnson*

Roger C. Adams

Laura Connors

Sean Gerold

Don Herring

Tim McCormick

Suanne Milligan

Paul Moehling

Jerry Spillane

Museum Staff

*Director
Larry Paarlberg
765-362-5769 Ext. 101
lpaarlberg@ben-hur.com*

*Associate Director/Collections
Amanda McGuire
765-362-5769 Ext. 100
amcguire@ben-hur.com*

*Associate Director/Education
Erin Gobel
765-362-5769 Ext. 102
egobel@ben-hur.com*

*Visitor Services
Stephanie Cain
765-362-5769 Ext. 100
scain@ben-hur.com*

*Grounds Manager
Deb King
765-362-5769 Ext. 103
dking@ben-hur.com*

Notes From The Director



Larry Paarlberg
Museum Director

Over the last several years, the General Lew Wallace Study & Museum has seen exciting changes in both the physical presentation of the buildings and grounds and in the quality and quantity of programming offered. The response has been rewarding. As a result attendance has increased from approximately 3,000 people annually to almost 9,000 last year. This increase not only demonstrates the impact the museum has on the quality of life in our community—it also impacts the local economy.

The projects and programs offered at the Museum would not be possible without the support of many in the Crawfordsville community and, truly, across the country. Each year supporters contribute to the Museum in a number of ways. **Membership** support serves to largely fund the educational programming offered at the Museum as well as to support on-going restoration and preservation activities.

Each year we also seek contributions for our **Annual Fund**. Gifts to the annual fund, which are separate from membership dollars, serve to bridge the gap between memberships, admissions, museum store sales, special event revenues, and the actual cost of running the Museum and its programs. These gifts help the Museum fulfill its broader mission of celebrating and renewing belief in the power of the

individual spirit to affect American history and culture year in and year out. These contributions provide the margin of excellence essential for this National Historic Landmark.

With an eye to sustainability, the trustees have put an **Endowment** in place. When we receive undesignated gifts or gifts in memory or in honor of someone, we add these funds to the endowment. As the endowment principal grows, it will someday provide interest revenue that will support the long-term stewardship of the museum. Finally, the trustees encourage **Planned Giving and Estate Planning**. These gifts of assets will ultimately assure that this landmark, gifted to the citizens of Montgomery County over seventy years ago, will be available for the enjoyment and education of generations to come. To support this particular program the board is pleased to announce that together with the Montgomery County Community Foundation we will be bringing Phil Purcell to Crawfordsville in September. In two separate programs, Phil will be sharing information about opportunities available to create a plan that benefits both loved ones and loved organizations!

If you are reading this newsletter there is a good chance that you have supported the museum—AND WE THANK YOU! Without your support, the Museum could not have achieved the great things that have already been accomplished and, through your gift, you have assured that General Wallace's legacy will continue to enrich our community with lessons about creativity, service, perseverance, and patriotism.

Your Gift of History

Phil Purcell, Vice President of the Ball State University Foundation, will highlight opportunities for incorporating philanthropy in estate planning to provide lasting benefit to family members as well as charities important to you. This complimentary program and reception will take place in General Lew Wallace's Study. Reservations required (765) 362-5769.

September 25, 2012

4:30–6:00 p.m.

The Bohumir Kryl Project - September 22

In partnership with the Visiting Artist Series at Wabash College, the General Lew Wallace Study & Museum will be presenting a program on an extraordinary man, Bohumir Kryl. He was an amazing recording artist and a virtuoso Cornetist without peer. He



performed with John Phillip Sousa's band, is believed to be the first man of Czech ancestry to be recorded by Edison, and established a military

band that was the forerunner of today's United States Air Force Band.

Although, Kryl was the young man who carved the decorative stonework on the Lew Wallace Study, we will be celebrating his impressive music career. This special evening in Salter Hall on the campus of Wabash College will feature: a narration of Kryl's life; a performance of Edison cylinder records, Victor & Zonophone disc records, and Diamond Disc Re-Creations played on antique phonographs; and a live concert band performing original Kryl music.

The event is free, but tickets must be arranged through the Wabash College

box office after August 29; seating is limited. For more information, please visit the official website for the event: www.BohumirKryl.com.



Kryl, on right, working on the carvings in the frieze of the Study building

Please mark your calendars to join us for this once in a life-time event on September 22 from 8:00 - 10:00 p.m. at Salter Hall on the Wabash College campus!

Beth Swift: Wallace Scholar

This month, we are highlighting Wallace Scholar, Beth Swift.

A graduate of Purdue University



Beth Swift

and lifelong resident of Montgomery County, Beth Swift came to Wabash as assistant to long time Wabash College Archivist and Lew

Wallace Study

Preservation Society member Johanna Herring. When her mentor retired, Beth assumed both the post of Archi-

ivist and later Johanna's place on the Study Board. Swift notes that "it has been a delight to see the Study Preservation Society grow and mature, completing the Carriage House project, earning the Institute of Museum and Library Science National Medal for excellence and now watching the incredible work on the Study itself. The General Lew Wallace Study and Museum is a real treasure in our community and one that is growing in prominence."

The many ties between Wabash College and this pioneering family are of great interest, not least because the Elston Homestead serves as

the official residence of the Wabash President. This connection along with a keen personal interest in 19th century history, led Beth to study the Elston family in greater depth. The men of the Elston family dominated regional business interests and helped to shape Indiana, yet it is through two of the daughters and their husbands, Lew Wallace and Senator Henry S. Lane, that the Elstons are known today. This powerful family and the homes they built here serve as subjects worthy of continuing study.

The Board and staff of the Study are delighted that Beth Swift has agreed to be a Wallace Scholar.

Zelda Harrison Seguin Wallace

Larry Paarlberg
Museum Director

David and Zerelda Wallace's only surviving son, David, Jr. married a prestigious woman, just as his half-brothers, Lew and William Wallace also did. The Wallace women, Susan Elston, Cordelia Butler, and Zelda H. Seguin all brought prestige, money, and connections to the family.

In 1870, census records list David, Jr., then 18, as a baggage master for a railroad in Indianapolis. In 1880, he was living in the home of his sister with his mother and working at the railroad. Reportedly a very handsome man of 28, David, Jr. married the beautiful Zelda Harrison Seguin in Baltimore on July 31 that same year.

Zelda was one of the most famous opera singers of her day. A contralto, Zelda became known as the Gypsy Queen because of her tremendous success in the opera "The Bohemian Girl." Among her accomplishments on stage, she introduced the role of Bizet's "Carmen" in English to the opera world and in her last New York appearance in 1886 she performed "The Mikado."

Born in 1848 in New York City, her parents discovered that young Zelda had a remarkable voice. They placed her under the tutelage of Anne Seguin, one of the most important opera teachers with an extraordinary career of her own. From 1840 until his death in 1852, Anne and her husband, Edward, dominated the opera world.

Zelda made her stage debut in 1865 at 17. During her time studying with Anne Seguin, she met Edward Seguin, Jr. They married in 1867. Edward, an opera singer, was trained in Paris and London and became one of the most popular performers of his day. Togeth-

er Edward, Jr. and Zelda performed throughout the country. In the 1870s, they had a son, Edward S.R. Seguin.

Edward, Jr. taught Zelda about make-up, stage presence, and acting. He also managed her career by selecting parts she would and, just as importantly, would not sing. For instance, he would not let her perform in Wagnerian operas because he felt Wagner's work did not suit the range of her voice. Under his tutelage, Zelda Seguin became internationally famous. In October 1879, Edward died suddenly of heart disease in New York.

Zelda met David Wallace, Jr. in early 1880 at the home of a mutual friend in Indianapolis. At the time, David was the Master of Transportation for the



Zelda, c. 1870

Indianapolis-Terre Haute railway. After a brief courtship, David proposed and within ten months of her husband's death, Zelda and David were married at St. Luke's Church in Baltimore. David was joined by a sister. The quiet service was a distinct surprise to many of Zelda's friends. Zelda even forfeited \$20,000 from her former mother-in-law due to this remarriage.

Records indicate that Zelda and David, Jr. had a son in October of 1881, who was also named David, but it appears this child died within a year. Other records indicate that the couple may have had another son in 1891, but the name and fate of this child is unknown.

Zelda resumed performing throughout the country. In 1895, Zelda was badly injured in a train accident when it jumped the tracks near Coatesville, Indiana. Two people were killed and although she did recover, Zelda was among the most seriously injured. As her professional career came to an end she still supported favored charities with small programs.

As she became a part of the social scene in Indianapolis in the early 1880s, Zelda provided musical performances for receptions and events sponsored by her mother-in-law, Zerelda Wallace, in support of suffrage. Her mother-in-law had not swayed Zelda on this issue. At her first meeting with Zerelda, Zelda confirmed that she was a firm believer in women's rights.

In 1910, David was a manager of a motor company in Indianapolis and the couple was living along prestigious North Delaware Street. 1911 was a terrible year for Zelda. A fire destroyed all of her costumes and memorabilia from her storied career. To add to her burden, David died in May 1911.

Zelda passed away in Indianapolis in February 1914. She was remembered in the press for her great stage career. David and Zelda are buried together in



*Zelda's tombstone,
Crown Hill Cemetery*

Crown Hill Cemetery. In a family of accomplished men and women,

Zelda Harrison Seguin Wallace was certainly one of the most talented and widely admired members of the Wallace family.

Taste, Continued from Page 1

Cellars Winery. This year may be the last year for one of the most popular vendors, Two Guys Cooking, who will serve their famous ribbon chips and chicken and sausage gumbo.

Other food highlights will include: lambburger sliders with chimichurri sauce, frog legs, California rolls, and a popcorn bar. In addition, traditional Taste favorites, including pork tenderloins, ice cream sundaes, and a variety of barbecued items will be available. For a complete menu, please visit the website.

Accompanying the delicious foods available will be fabulous and varied live music. From 1:00 to 3:00 local band Nut Hatch will perform Celtic and American folk songs. From 4:30 to 6:30 Mike Butler & Slim Pickin' will entertain with bluegrass music. The Snakehandlers Blues Band will play rock and blues music from 8:00 to 10:00.

Another highlight of the day will be the Taste! Main Street Mile run, organized by the Wabash College Cross Country team. The run will begin at 6:00 p.m. To register, please visit: <http://www.active.com/running/crawfordsville-in/taste-main-street-mile-2012>.

Advance tickets are now on sale in select locations. Visitors can purchase Taste tickets at the Carriage House Interpretive Center at the General Lew Wallace Study & Museum; the Montgomery County

Visitors and Convention Bureau at the corner of Pike and Green streets, Milligan's Flowers & Gifts at 115 E. Main, and the Malcolm X Institute on the campus of Wabash College. Advance tickets are

A special thanks to the Title Sponsors of this year's Taste: The Montgomery County Visitors and Convention Bureau, The Montgomery County Tourism Commission, Franciscan St. Elizabeth Health-Crawfordsville, the Journal Review, F.C. Tucker West Central, and The Paper. For a complete list of sponsors, please visit the Taste website.

The Taste is the biggest annual fundraiser for the General Lew Wallace Study & Museum. All proceeds from gate sales directly benefit the Museum's collection and programming. Bring your friends and family to the county's biggest picnic to help support the organization that keeps General Lew Wallace's legacy alive for future generations. For more information about this year's Taste, visit www.tasteofmontgomery-county.com.



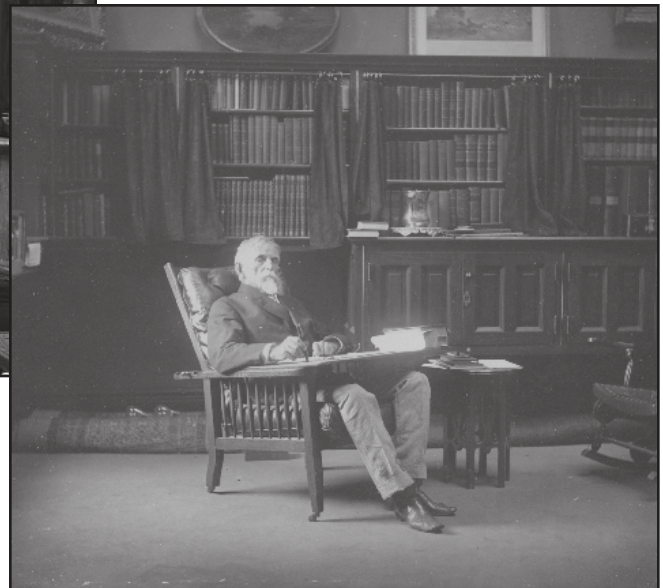
Top: Bernie O'Bryan, a Lew Wallace por-trayer, poses at the Bon Appetit booth. Bottom: O'Bryan enjoys a drink at the A County A-Fair Sand Bar during the 2011 Taste.

\$4 for adults and \$2 for students, and advance ticket holders can bypass the line at the entry gate for quicker admission to the fun.

Interested in attending the Taste for free? The Museum is recruiting volunteers to assist before, during, and after the event. Volunteers get a Taste t-shirt and free admission to the event. To volunteer, please call Amanda McGuire at (765)362-5769 or e-mail amcguire@ben-hur.com.



Study Update



Green velvet curtains were recently installed in the Study (left) based upon historical photos (left). Special thanks go to Laura Connors for designing and fabricating the curtains.

History Beneath Us

Amanda McGuire

Associate Director: Collections

The “History Beneath Us” program continued this spring when Crawfordsville native Anne Moore along with Dr. Chris Moore and archaeologists from the University of Indianapolis came to the Study on May 6 and 7. The group continued work on the reflecting pool area by completing the initial trench that was opened in 2010. The work done in this area has provided a lot of new information about the reflecting pool. They have determined the approximate depth of the pool (around 4 feet) and have found that it did not have a brick, stone or concrete base. The depth indicates that Wallace could have used this pool to winter over fish.

Several artifacts have been found in the fill that was used when the pool was filled in, but none of these can be definitively tied to Lew Wallace because we are not sure where the fill dirt came from. There is also a builder’s trench on the outside of the pool wall that contains artifacts that should date to the construction of the pool and therefore, to Lew or the contractor who built the pool. The archaeologists have uncovered ceramics (pieces of plates, bowls and tea cups), glass bottles, metal utensils and containers, nails and brick in these areas.

This program will return on September 22-23 from 10:00 a.m. to 5:00 p.m. with more activities for the public to participate in, including an Archaeologist Training area where young archae-

ologists will be sure to unearth some artifacts. As always, “History Beneath Us” encourages public participation in scraping dirt with trowels and screening for artifacts alongside the excavation crew. We hope to continue work on the reflecting pool area by exposing the top layer of bricks around the perimeter of the reflecting pool so that we can see the entire shape of the pool and how it fits in with the Study. Another area of interest is located close to the Carriage House and the brick wall that runs on the south side of the property, separating the Study from the former Wallace residence. Dr. Moore took soil core samples from that area in May and found some promising deposits and evidence of a possible foundation. This area could be a cistern, privy or outbuilding foundation.

A Warm Farewell to Kara Edie



Kara Edie, long-time Marketing & Visitor Services Coordinator, has left the Museum for a job at the Montgomery County Visitor Services Bureau.

Committee and the Taste of Montgomery County Committee. She has also designed numerous newsletters, flyers, and postcards for the museum. Additionally, she was responsible for a web-site redesign and ensuring that the museum moved into the social media world, where we now have a solid presence.



Kara at the 2011 Holiday Tea with her prized wreath purchase

Kara has been our marketing maven and computer guru for 8 years. She has served on the Holiday Tea

While she will be greatly missed, we are happy for her and her new opportunity. Best of all, she's only a phone call away! Best wishes, Kara!

General Lew Wallace deserves his place in history. Help us preserve that place.

Membership to the **Lew Wallace Study Preservation Society** begins with your annual contribution of \$25 or more. Membership offers discounts and complimentary admission and event tickets.

Lieutenant Level—\$25 (Individual)

- Complimentary admission for 1
- Subscription to newsletter

Major General Level—\$50 (Family)

- Complimentary admission for family
- Subscription to newsletter

Governor Level—\$100 (Sustainer)

- Major General-level benefits, plus
- 10% discount in museum shop



Ambassador Level—\$250 (Benefactor)

- Governor-level benefits, plus
- 2 tickets to the annual Taste of Montgomery County

Ben-Hur Level—\$500+ (Patron)

- Ambassador Level benefits, plus
- 1 ticket to the annual Holiday Tea

Name _____

Address _____

City _____ State _____ Zip _____

Phone number _____ e-mail _____

Please clip & mail your membership information to LWSPS, PO Box 662, Crawfordsville, IN 47933

- Enclosed is my check payable to the Lew Wallace Study Preservation Society
- Charge my gift to (circle one): MasterCard Visa Discover

Card Number _____ Exp. _____ Security Code _____ (3 digits on back)

Signature _____

- I wish to remain anonymous
- I'm declining benefits, making my contribution deductible to the full extent of IRS regulations.

Spring & Summer Educational Programs a Success

Erin Gobel

Associate Director: Education

Spring at the museum was extremely busy with school field trips. We saw students from Ladoga Elementary, Waveland Elementary, Hoover Elementary, Hose Elementary, and Nicholson Elementary, ranging from kindergarten to 4th grade on-site. Erin presented "Lew the Author" to a class of second graders at Nicholson, presented "Fishing with Lew" at Pioneer Day for Hoover 4th graders, and to preschoolers with Head Start off-site. In May alone, we presented tours or programs to 334 children and adults off-site and 477 children and adults on-site in addition to regular tours!

Though field trips slowed in the summer, our educational programs and outreach continued. The eighth annual Lew Wallace Academy was held June 26-30. The sixteen middle-school aged children who attended had a wonderful time making new friends and experiencing learning in a new

way, due to the support of our community. The children particularly enjoyed participating in the Civil War Encampment.

The eighth annual Lew Wallace Youth Academy was possible due to the sponsorship of Roberta Berry, Clements Plumbing, Delta Theta Tau Sorority-Epsilon Omega Chapter, Crawfordsville Kiwanis, Brian Keim, Montgomery County Extension Homemakers, Montgomery County Retired Teachers Association, Psi Iota Xi - Gamma Xi Chapter, Pyle Properties, Sugar Creek Kiwanis, Tom and Marie Stocks, and Union Township/Sally Evans. Grants were awarded from Tipmont REMC Operation Round-Up, the Montgomery County Community Foundation, and the Walmart Foundation.

Additionally, several community members agreed to serve as faculty, including: Joy Dugan, Kara Edie, Wendy Feller, Dr. James Makubuya, Larry Paarlberg, Karen Patton, Sr. Stella Sabina, and Jim Swift. We

also had several volunteers help the event run smoothly: Sam Andre, Lauren Gobel, Kyle Gobel, Sharon O'Brian, Dale Petrie, Daniel Petrie, and Cathy Smith.

The Civil War Lectures were presented to capacity crowds again this year, thanks to the expertise of Ginny Terpening and Bernie O'Bryan during their lectures.

The Civil War Encampment took place on June 30 and July 1. Though the weather was hot, over 300 people turned out for this annual event. The cavalry unit and horses, new to the event this year, were huge hit with guests. Several groups participated in the reenactment including: Mid States Living History Association, the Indiana Society of Civil War Surgeons, the 10th Illinois Dismounted Calvary, the 12th US Colored Heavy Artillery, the US Christian Commission Mid-States, the 35th Indiana Volunteer Infantry "1st Irish," and the Emily Ann Thompson Parlor Trio.

Stephanie Cain: Visitor Services Coordinator



Stephanie Cain

Stephanie Cain has recently joined the staff at the Museum as the new Visitor Services Coordinator.

She will be working on Fridays and Saturdays, giving tours and working with the public.

Stephanie holds a BA from Purdue University in history and creative writing. Additionally, she has completed graduate coursework in Library Sciences at IUPUI.

She has worked at the Linden Public Library, the Frankfort Public Library, and the Purdue University Life Sciences Library, as well as a freelance writer. She most recently worked for Sysco Foodservices as

Profit Management Coordinator.

Cain says that she has "always enjoyed visiting Civil War sites with my family throughout my life." She says she is excited to learn more about Lew Wallace and use her knowledge of Civil War history here at the Museum.

Welcome to the GLWSM, Stephanie!

From the Gardens: Hot, Hotter, & Hawks

Deb King
Grounds Manager

The grounds of the Museum are suffering through one of the driest summers on record. The Museum has received only 3.4 inches of rain in the last two months (average is 7.7 inches); in shady areas the lawn is still slightly green, while in the sunny areas, the grass is brown, dry and crisp, and going dormant. The gardens are surviving with watering only 2 days a week. Combined with a heat wave that saw 4 consecutive days over 100 degrees, flowers are alive but not thriving. Plants growing the best in the drought stricken gardens are lantana, blue salvia, blue wave petunias and the castor beans. Even the marigolds are having trouble producing blooms.

Though the grounds are dry, the birds are thriving! Bird houses spread throughout the grounds have been used by titmouse, wrens and sparrows. We are fortunate this year to have nesting hawks. A large white oak was used as a nesting platform for a pair of red-shouldered hawks. By April 13th, a hawk was sitting on a nest made of sticks and leaves. We kept a close eye on the hawks and were finally able to

get pictures of a fuzzy, grey hatchling on May 3rd. By May 5th, three fuzzy heads appeared. It was triplets! Armed with binoculars and the camera, we kept records of their growth.



A hawk perched atop the pediment of the Study

May 22nd, the young hawks were standing in the nest, flapping their wings and looked ready to fly at any time. One day, I was in their territory too long, trying to get a picture, when out of the sky a hawk clipped the top of my head and veered away! The hawks were very territorial with their young ready to leave the nest. Visitors stayed clear of the area for a few days. The first hawk left the nest on May 25, hopping to a branch nearby. Their calls were very loud and were heard all day long, amusing our visitors.

The end of the month saw the hawks take flight, flying across the lawn area, landing on tree branches, one after the other. It was a sight to see all five hawks flying over the grounds. They became our entertainment in the month of June, calling to each other in their very loud voices, landing on the statue of Lew Wallace, the bird-baths and picnic tables. Slowly as July approached, they weren't spotted during the day and their calls became quiet. I suspect with the dry weather, the hunting became difficult for the plethora of hawks and some of them moved to new territory.

Hawk identification from visitors ranged from red-tailed hawks, Cooper's hawks, and sharp-shinned hawks. Correctly identifying the hawks was made easier by the Cornell Lab of Ornithology, which has a very good website, allaboutbirds.org. This site has a vocal section for all the birds that greatly helped identify the hawks at the Museum. The calls are infrequent now, heard mostly in the evening but we are hoping that they continue to use the Museum grounds for years to come.

Sam Andre: Summer Intern

We have been delighted to have Sam Andre as a summer intern. He is a 2009 Crawfordsville High School graduate and current Valparaiso University senior. He is majoring in History with auxiliary degrees in both Spanish and the Humanities. At Valparaiso, Sam recently entered both the History and Arts & Sciences honor societies, and after graduation plans on attending law school.



Sam Andre volunteered to be the embalmed body during the Civil War Encampment weekend

While interning at the museum, Sam has been researching Wallace's involvement in the Henry Wirz trial, as well as helping with both the Lew Wallace Youth Academy and tours of the grounds. Overall, he said he "has become fascinated with the interesting life and actions of General Wallace that I knew little about before working here."

General Lew Wallace Study & Museum

Contributions Received March 20 through June 30, 2012

Every member and donor matters a great deal to us and we appreciate your support. We have made every attempt to ensure the accuracy of this list. If we have made an error in your listing, please contact us immediately.

Ben-Hur

Chuck & Nancy Beemer
John & Jill Capper
James & Lorena Elmore

Ambassador

Marc & Helen Hudson
Donald & Bonnie Mills
Tom & Marie Stocks

Governor

David Blix
Gary & Tina Girvin
Paul & Susie Moehling
Horace Paarlberg
Ted & Betty Ratcliff
Jim & Mary Jo Turley
Rodger & Machiel Walther
John & Clara Wooten
Bruce & Patricia Zorger

Major General

Aus & Lucy Brooks
Steve & Barbara Carver
John & Gert Cowan
Dan & Margaret Edie
Earl & Ruby Elliott
Lyle & Dorothy Fogel
Tobey & Peggy Herzog
Chris & Raquel Johnson
Terry Lawrence
Stephen & Susan Little
Corinne Mitchell
John & Marilyn Wells
Mary Wernle

Lietuenant

Phil & Farzaneh Boots
Linda Brady
Douglas Clanin
Vernon & Barbara Easterling

Richard Ford
Chandler Lighty
Doug & Nancy Mills
Ed Pease
Robert & Nancy Rogers
Stephen & Lisa Sladek
Sam Smith
Charles & Leslie Warren
Jean Williams
Jack & Beverly Wyatt

Adopt-A Spot

Chuck & Nancy Beemer
Mike & Diane Beemer
Rusty & Cathy Carter
Brian & Cheryl Keim

Annual Fund

P. Don Herring

Study Announces Grant

The General Lew Wallace Study & Museum is pleased to announce that it has received a generous challenge grant from the Jeffris Family Foundation for the complete restoration of the spectacular interior paint finishes of General Lew Wallace's Study. The Jeffris Family Foundation will contribute \$100,000 toward the \$300,000 cost of the paint restoration and other attendant work. The original paint finishes date from the 1890s and are the largest work of art created by Lew Wallace.



Detail of the mural found in the Study during the roof restoration project in 2011

Look for more information regarding this grant in the next newsletter.

2013 Survey

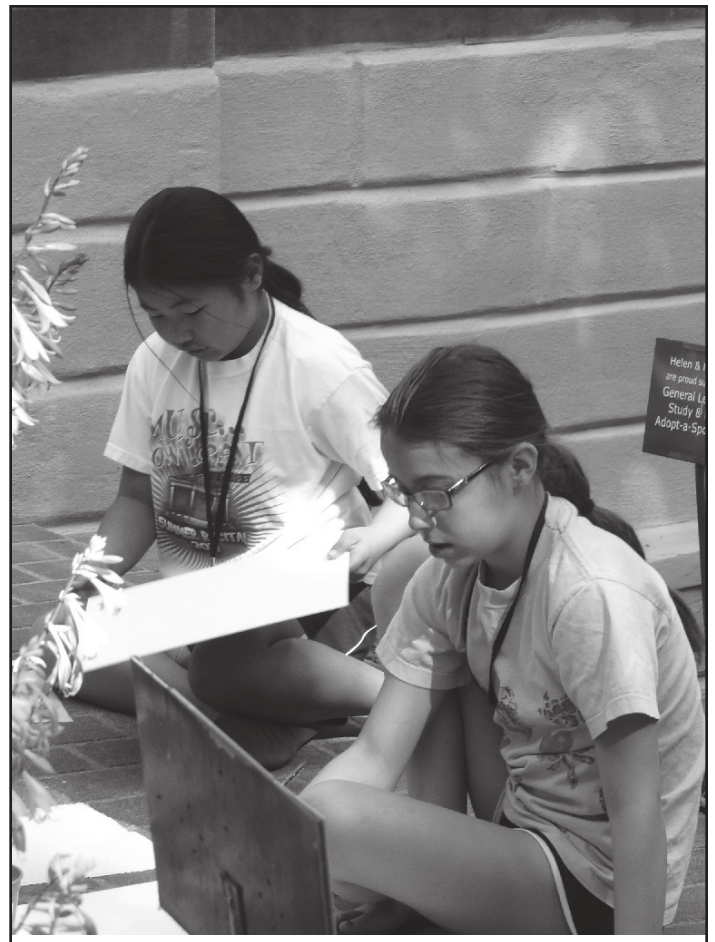
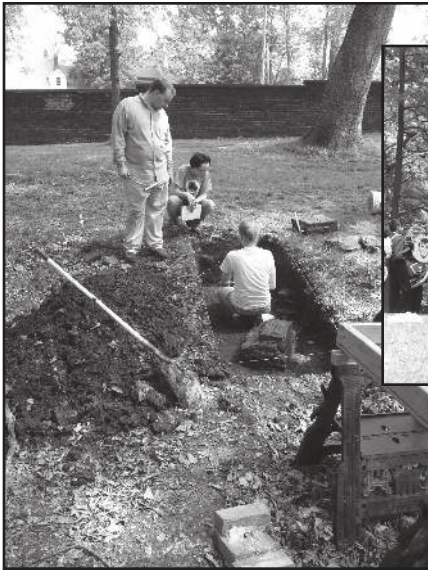
As we begin to plan our 2013 calendar, we would love to hear your feedback about public programs here at the Museum. Please take a moment to fill out our brief survey: www.surveymonkey.com/s/LRTJNH6.

The survey will ask that you gauge your interest in certain types of programming we are considering offering next year, including a book club, walking tours, and genealogy programs.

Your feedback is welcome and appreciated!



Study Scrapbook



May and June have been busy with programs and special events! *Clockwise from top left*, Dr. Chris Moore oversees archeological work on May 5; a band performs during the Parade of Bands on June 23; cavalry demonstration with horses were a huge hit with visitors during the Civil War Encampment; Hannah McLean and Cokie Hemmerlein practice painting during the Lew Wallace Youth Academy and Marlene Simmonds walks her dogs during Stroll for Strays held on Study grounds on May 6.



GENERAL LEW WALLACE STUDY & MUSEUM

200 Wallace Avenue
PO Box 662
Crawfordsville, Indiana 47933
Phone: 765-362-5769
Email: study@ben-hur.com
www.ben-hur.com

PRSR STD Nonprofit US Postage Paid Crawfordsville IN Permit No. 8

RETURN SERVICE REQUESTED

2012 Summer & Fall Events Calendar

August 25—The sixth-annual **Taste of Montgomery County** will take place on museum grounds and feature scrumptious food from local restaurants and live music from three different acts. Mark your calendars to join us for the best Montgomery County has to offer! Visit www.tasteofmontgomerycounty.com for more details.

Sept 22—In cooperation with Wabash College Visiting Artists Series, the Lew Wallace Study & Museum will present “**The Bohumir Kryl Project**” in Salter Hall on the Wabash College campus. The program will feature live music and discuss Kryl’s artistic and musical accomplishments. Visit www.BohumirKryl.com.

Sept 22-23—Join archaeologists from the University of Indianapolis as they continue excavations on Lew Wallace’s reflecting pool during **History Beneath Us**. See historic archaeology in action and join in the fun by digging and sifting for artifacts.

Sept 25—Phil Purcell, Vice President of the Ball State University Foundation, will present a short program on **estate planning and planned gifts** from 4:30 to 6:00 p.m.

Sept 29—Join the museum as we celebrate **Smithsonian Museum Day Live!** Free admission with Smithsonian pass.

Oct 18—The **Civil War Lecture Series** concludes at the Crawfordsville Public Library. **Chuck Beemer** will present “Breakfast at Donelson” and **Roger Adams** will speak about Lew Wallace’s defense of Cincinnati.